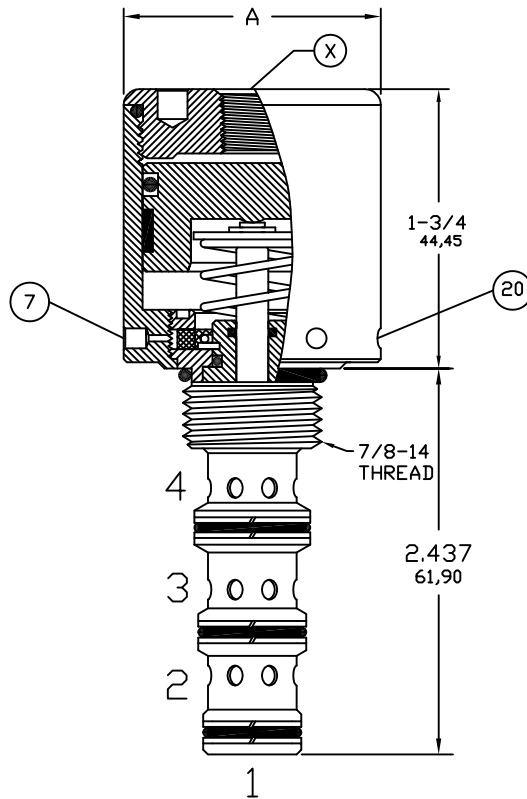


CARTRIDGE VALVE



SPECIFICATIONS

Air Pilot Operated Hydraulic Spool Valve.
 Four Way, Directional Control or Selector Valve.
 Maximum System Pressure:
 Ports A, B, P, and T rated to 3,000 PSI.
 Maximum Pilot Pressure (X port) 150 PSI.
 Fluid temperature -40°F (-40°C) to 200°F (93.3°C)
 Install Cartridge Valve using No. 471 Spanner Tool.
 Valve should screw in freely to the Mount Seal.
 Final tightening to 15 foot pounds torque.
 Use lubricant on external oil seals and mounting threads.

OPTIONS

Pilot Port (Key X) is 1/8 NPT.
 Optional Pilot Porting includes 1/4 NPT, SAE4, and SAE6.
 Standard seals are Buna-N with Teflon back up rings.
 Optional seals include Viton, Teflon and others.
 Keys 7 & 20 are vents to atmosphere.
 T Option provides 10-32 Threaded ports at these locations.

PILOT RATIO NOTES

Applies to Port 1 Only. Ports 2, 3 & 4 are balanced.

- TO CALCULATE THE CORRECT PILOT RATIO VALVE TO ORDER FOLLOW THESE STEPS:
- Determine the MAXIMUM possible system pressure.
Multiply X 1.1 = SYSTEM
 - Determine MINIMUM possible pilot pressure.
Multiply X .9 = PILOT
 - Divide SYSTEM by PILOT = PILOT TO SYSTEM RATIO
 - Round up to standard available ratio.

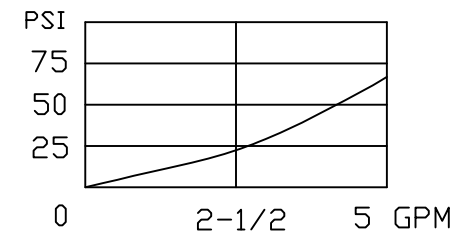
Cavity & Housing

Cavity & Tooling C-8544 (10-4);
 See Spec. Sheet 1200671
 Line Mount Housings:
 See Spec. Sheet 1200675 & 1202930
 Panel Mount Housings & Spacers:
 See Spec. Sheets
 1202984 and 1202990
 Cavity & Housing information found at
www.doering.com Products Housings
 Doering Co. also manufactures multi function
 and multi station housings and manifolds.

TOOLING

1/8 (3.175) Pin Spanner Tool
 Order No. 471
 3/16 (4.763) Face Spanner Tool
 Order No. 482

PRESSURE DROP CHART



4PS SERIES

4 Way Spool Valve, Pilot Operated.
 Directional Control or Selector Valve.

PILOT TO SYSTEM RATIO

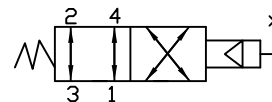
" A " DIAMETER

CARTRIDGE VALVE NO.

FUNCTIONAL SYMBOL

108:1 1-1/2 (38.1)
 131:1 1-5/8 (41.28)
 183:1 1-7/8 (47.63)
 277:1 2-1/4 (57.15)

442371080
 443371310
 446371830
 447372770



108:1 1-1/2 (38.1)
 131:1 1-5/8 (41.28)
 183:1 1-7/8 (47.63)
 277:1 2-1/4 (57.15)

442371083
 443371313
 446371833
 447372773

