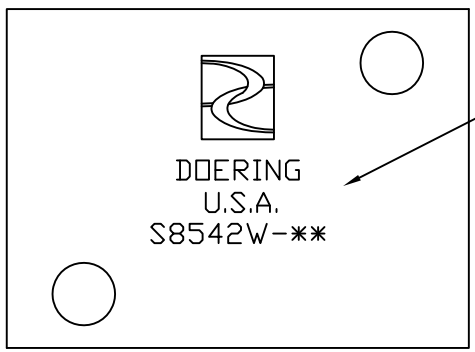
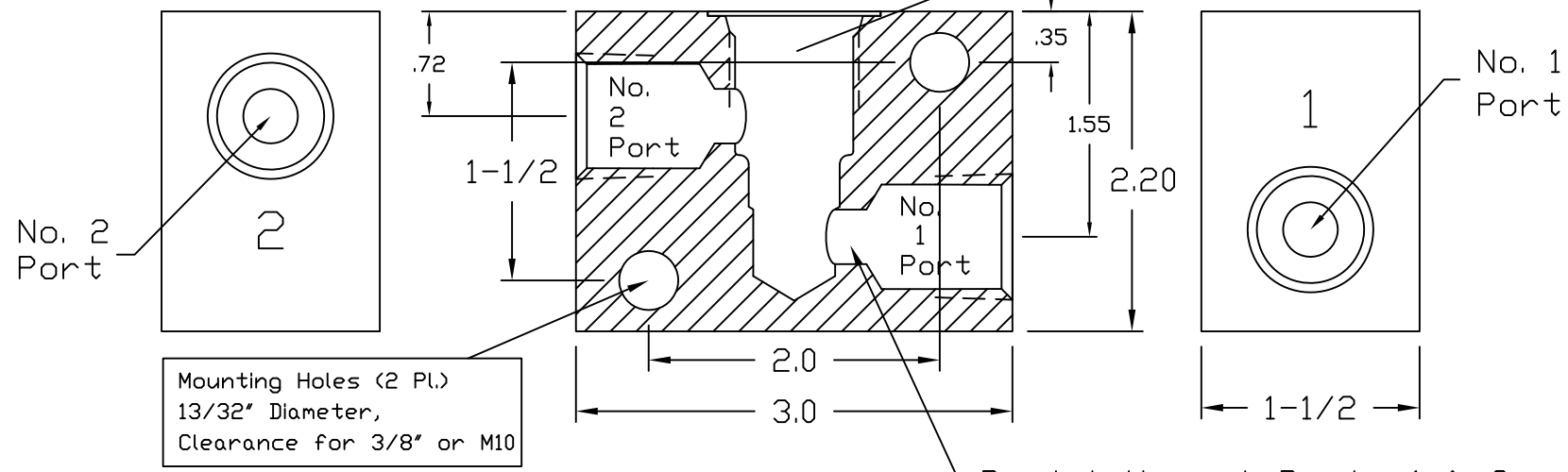


6343 RIVER ROAD SE ■ CLEAR LAKE, MN 55319 USA
 Telephone: 320-743-2276 ■ Fax: 320-743-3723
 mailbox@doering.com ■ www.doering.com



Identification
Front & Back

Valve or Pump Cavity:
Doering C-8542
Industry 10-2



Restriction at Ports 1 & 2
 5/16 ϕ for -1, -2, -3, -4, -6
 3/8 ϕ for -5 and -8

ORDER INFORMATION:

S8542W-

- Ports 1 & 2
- 1 (1/8 NPT)
 - 2 (1/4 NPT)
 - 3 (3/8 NPT)
 - 4 (SAE4, DRB)
 - G4 (G 1/4-19 BSPP)
 - 5 (1/2 NPT)
 - 6 (SAE6, DRB)
 - G6 (G 3/8-19 BSPP)
 - 8 (SAE8, DRB)
 - G8 (G 1/2-14 BSPP)

Material Option, Pressure Rating

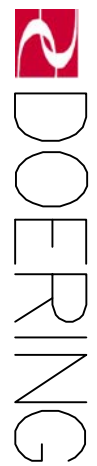
Pressure Note: Double pressure rating for Port 1 only.
 Applies to Port Sizes -1, -2, -3, -4 and -6

Blank	(6061 Aluminum)	3,000 PSIG
S	(304 Stainless)	5,000 PSIG
S316	(316 Stainless)	5,000 PSIG

Doering Line Mount Housing for
Valve or Pump, Wide Body Style.

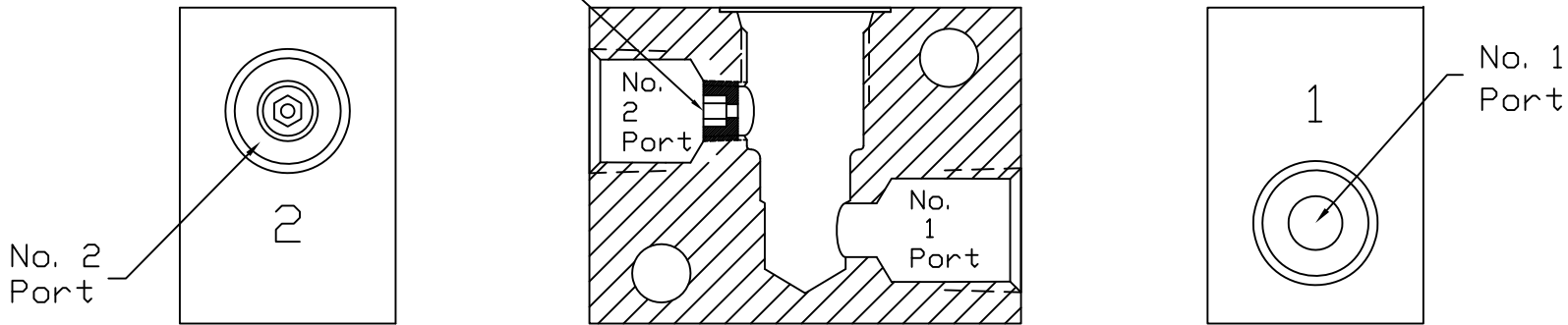
For Smaller Line Mount Body Style,
see 1200674 Spec. Sheet.

For Panel Mount Housing System,
see 1202982 and 1203290 Spec. Sheets.



R2094 is illustrated:

1/8 NPT Removable Brass Orifice Plug
with 3/16 Internal Hex



ORDER INFORMATION for Optional Restrictor at Port 2 Location Only:

S8542W- R####

Ports 1 & 2
See Page 1

R1 or R2 (Restrictor Port 1 or 2)
Followed by Restrictor Orifice Diameter
Orifice Diameter Options .015" to .188"
Tolerance $\pm 0.005"$, $\pm 0.127\text{mm}$

Material Designation
See Page 1

Available Sizes:

- R#015 (.015", 0.38mm)
- R#031 (.031", 0.79mm)
- R#047 (.047", 1.19mm)
- R#063 (.063", 1.60mm)
- R#078 (.078", 1.98mm)
- R#094 (.094", 2.39mm)
- R#125 (.125", 3.20mm)
- R#141 (.141", 3.58mm)
- R#156 (.156", 3.96mm)
- R#188 (.188", 4.78mm)

Restrictor Option Notes:

If Restrictor is not required, order from Page 1 only.
Best to only use restrictor in inlet (upstream) Port.
When ordered, housing is modified to receive 1/8 NPT Brass Plug
on the designated Port. IE: R1 or R2.
Restrictor Plug has 3/16" Internal Hex for installation or removal.
Plug is factory installed without thread sealant.
Restrictor Plugs may also be ordered separately.

6343 RIVER ROAD SE ■ CLEAR LAKE, MN 55319 USA
Telephone: 320-743-2276 ■ Fax: 320-743-3723
mailto:doering.com ■ www.doering.com

