

# CARTRIDGE VALVE

## SPECIFICATIONS:

Normally Closed Check Valve  
 Manual Override to hold Open.  
 Maximum pressure at Ports 1 and 2 is 5,000 PSI.  
 Install Cartridge valve using 1" wrench  
 Final tightening to 20 foot pounds torque.  
 Use lubricant on external oil seals and mounting threads.  
 Fluid temperature -45°F (-42.7°C) to 200°F (93.3°C)

## MATERIALS & OPTIONS

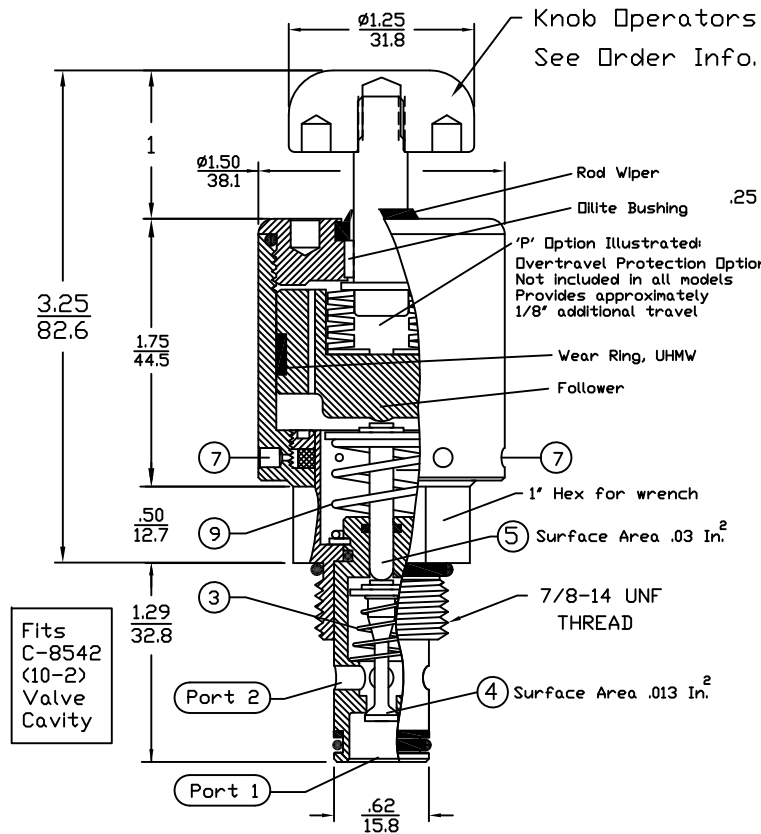
T Option 10-32 vent ports at Key 7 ( 2 Places )  
 Seat ( Key 4 ) material is heat treated Stainless.  
 Seal Materials used are Buna-N and Teflon.  
 Optional seal and construction materials available.

## SHIFT FORCE NOTES:

15 Pounds of Force is required to compress springs, Key 3 & 9  
 To determine the additional operating force imposed by the system pressure, multiply the system pressure X .03 and add the result to the 15 Pound spring force.

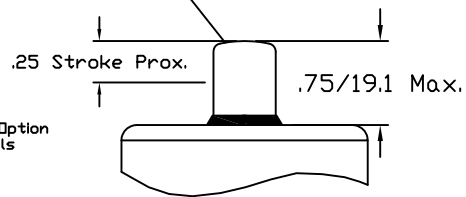
Example: 1,000 PSI System  
 1,000 X .03 = 30#  
 30 + 15 = 45#  
 Total Operator Force = 40#

If Tank is Port 2, force is less.



INCH  
METRIC

Direct Plunger Operator  
 .75/19.1 Radiused End  
 Material 17-4 PH900



## Cavity & Housing

Cavity C-8542 (10-2);  
 See Spec. Sheet 1200621

Line Mount Housings:  
 See Spec. Sheets  
 1200674 and 1201455

Panel Mount Housings:  
 See Spec. Sheets  
 1202982 and 1202990

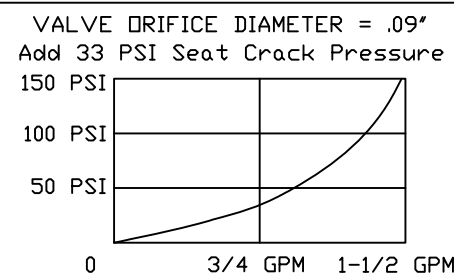
SPEC. SHEET NO. 1201526 REV. 005

Valve Number: 94H42M##33

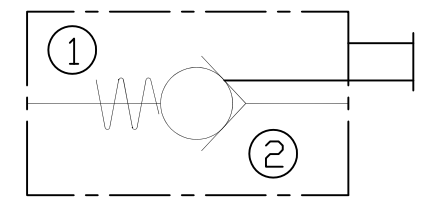
□ = No Overtravel Protection  
 P = Overtravel Protection

Operators:  
 D = Direct Plunger  
 K = Knob, Aluminum  
 R = Knob, Red Ano.  
 S = Knob, Stainless

## PRESSURE DROP CHART $C_v=0.1$



## POC SERIES



Check Valve with Manual Override to hold open.

