

SPECIFICATIONS:

Normally Closed Check Valve
Manual Override to hold Open.
Maximum pressure at Ports 1 and 2 is 5,000 PSI.
Install Cartridge valve using 1" wrench
Final tightening to 20 foot pounds torque.
Use lubricant on external oil seals and mounting threads.
Fluid temperature -45°F (-42.7°C) to 200°F (93.3°C)

MATERIALS & OPTIONS

T Option 10-32 vent ports at Key 7 (2 Places)
Seat (Key 4) material is heat treated Stainless.
Seal Materials used are Buna-N and Teflon.
Optional seal and construction materials available.

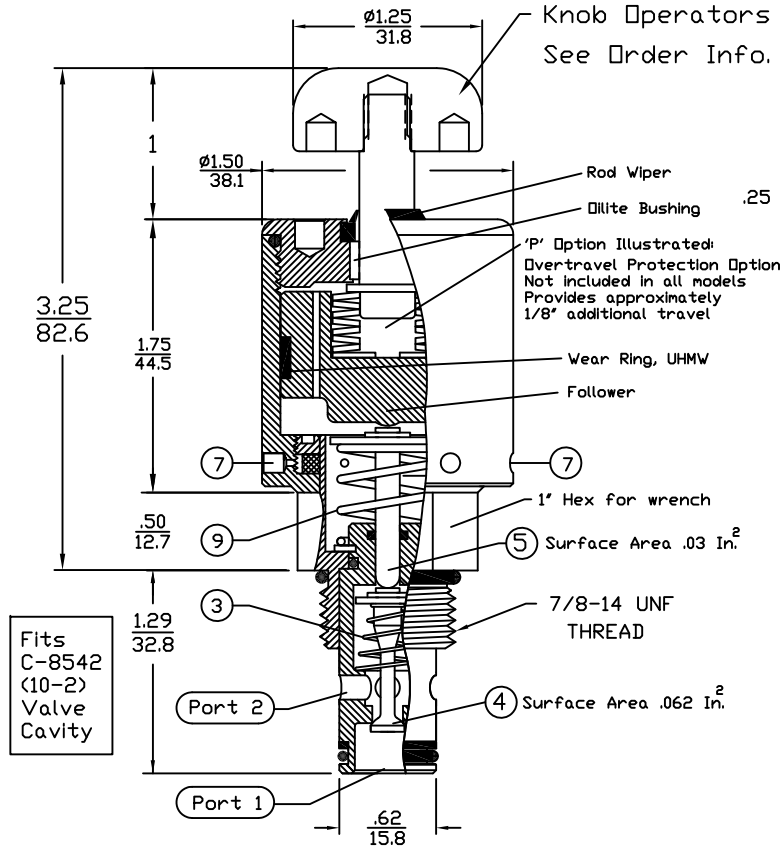
SHIFT FORCE NOTES:

15 Pounds of Force is required to compress springs, Key 3 & 9

To determine the additional operating force imposed by the system pressure, multiply the system pressure X .062 and add the result to the 15 Pound spring force.

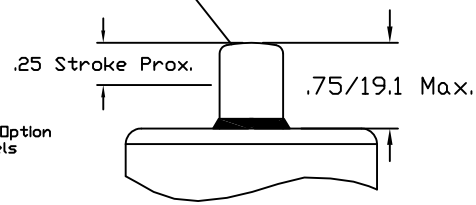
Example: 1,000 PSI System
1,000 X .062 = 62#
62 + 15 = 77#
Total Operator Force = 77#

CARTRIDGE VALVE



INCH
METRIC

Direct Plunger Operator
.75/19.1 Radiused End
Material 17-4 PH900



Cavity & Housing

Cavity C-8542 (10-2):
See Spec. Sheet 1200621

Line Mount Housings:
See Spec. Sheets
1200674 and 1201455

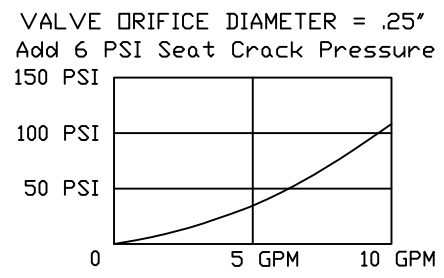
Panel Mount Housings:
See Spec. Sheets
1202982 and 1202990

Valve Number: 94H92M##06

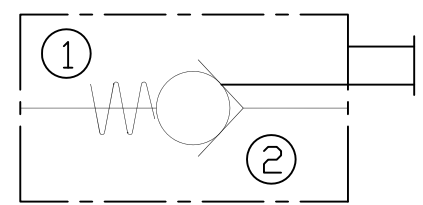
□ = No Overtravel Protection
P = Overtravel Protection

Operators:
D = Direct Plunger
K = Knob, Aluminum
R = Knob, Red Ano.
S = Knob, Stainless

PRESSURE DROP CHART $C_v=0.9$

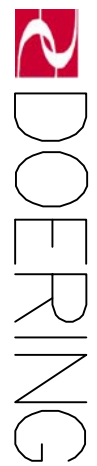


POC SERIES



Check Valve with Manual Override to hold open.

6343 RIVER ROAD SE ■ CLEAR LAKE, MN 55319 USA
Telephone: 320-743-2276 ■ Fax: 320-743-3723
mailto:mailbox@doering.com ■ www.doering.com



SPEC. SHEET NO. 1201528 REV. 005