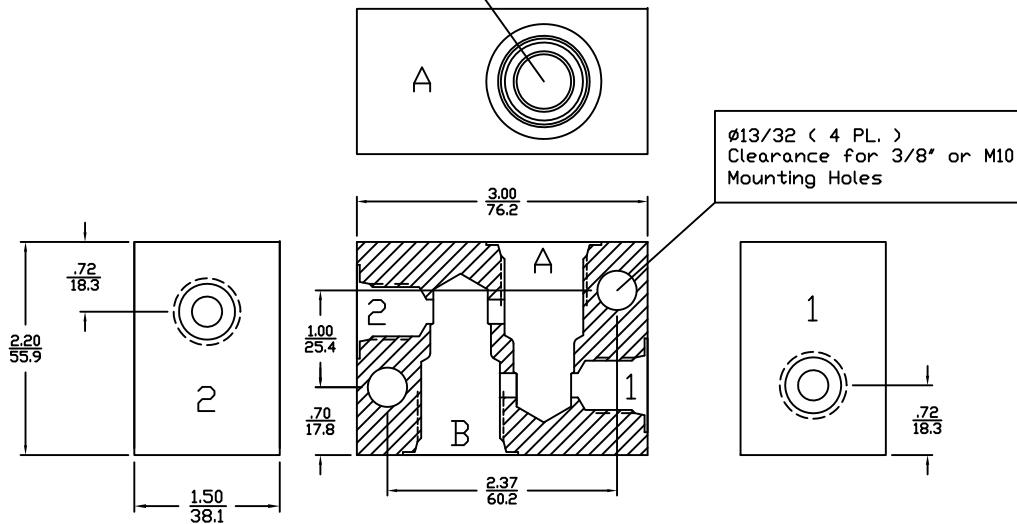
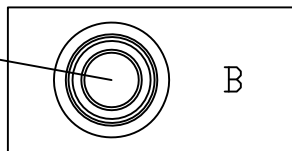


INCH
 METRIC

Cavity 'A'
 Doering C-8542
 Industry 10-2
 Spec. Sheet 1200621



Cavity 'B'
 Doering C-8542
 Industry 10-2
 Spec. Sheet 1200621



S1552 Series Housing
 Order Information:

S1552-

Ports 1 & 2

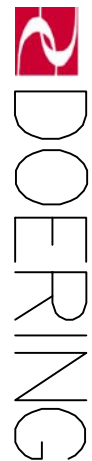
- 1 (1/8 NPT)
- 2 (1/4 NPT)
- 3 (3/8 NPT)
- 4 (SAE4, □RB)
- 6 (SAE6, □RB)

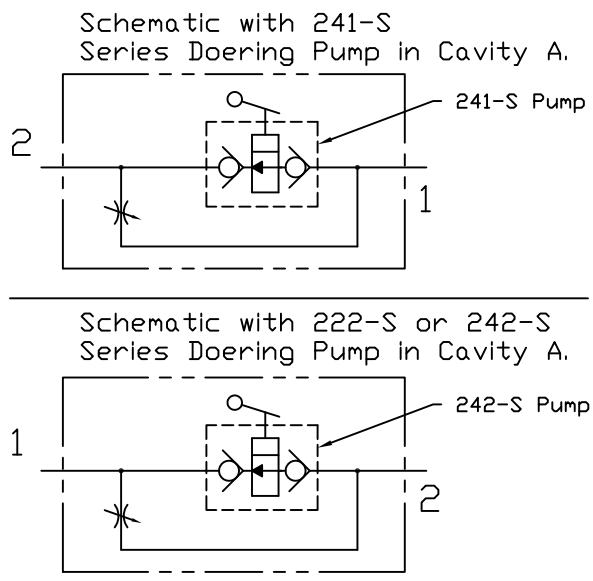
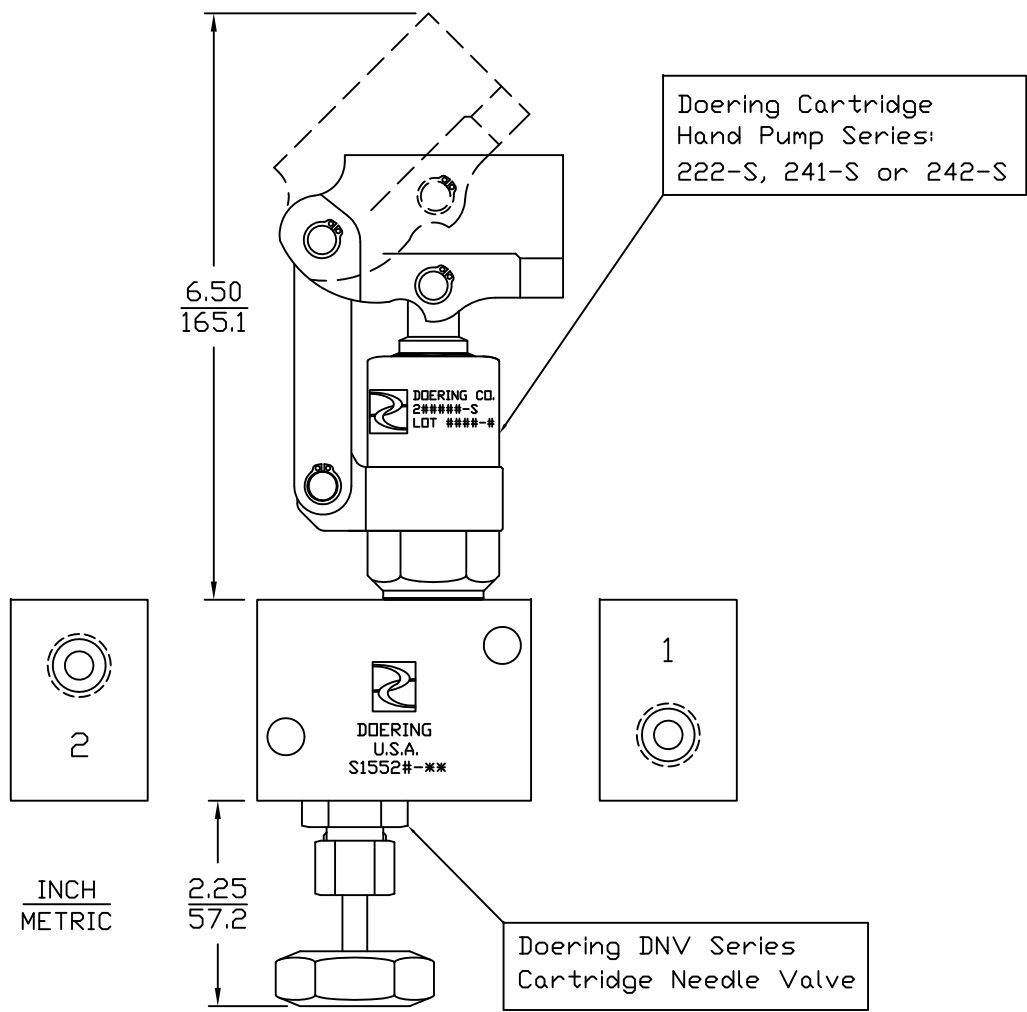
Material Option, Working Pressure
 Proof Pressure 2X Working PSIG.

Blank	(6061 Aluminum)	3,000 PSIG
S	(304 Stainless)	5,000 PSIG
S316	(316 Stainless)	5,000 PSIG

App Pages Follow

Order Housing and Valves Separately

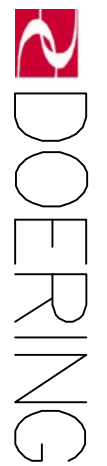




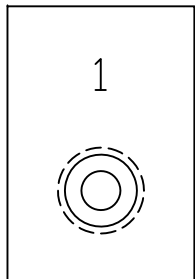
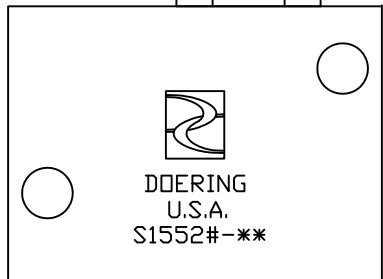
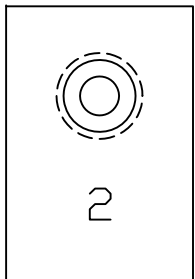
Assembly may be orientated in any position.
 Example Assembly:
 Order Components Separately.

- S1552#-## Doering Housing, See Page 1 for Part Number Detail.
- 222###-S Doering Cartridge Pump, Ref. Spec. Sheet 222##
- 241###-S Doering Cartridge Pump, Ref. Spec. Sheet 241##
- 242###-S Doering Cartridge Pump, Ref. Spec. Sheet 242##
- DNV-K-10-#-###-### Doering Needle Valve, Spec Sheet 1201273

S1552 Series Housing
 Illustrated with
 Doering Cartridge Pump
 and Needle Valve



Doering DCV Series
Cartridge Check Valve

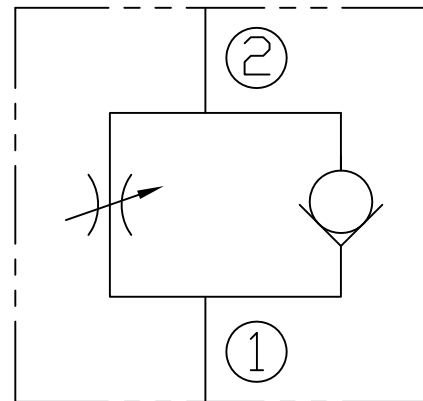


INCH
METRIC

2.25
57.2

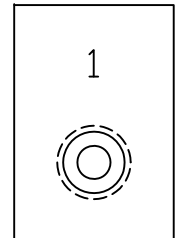
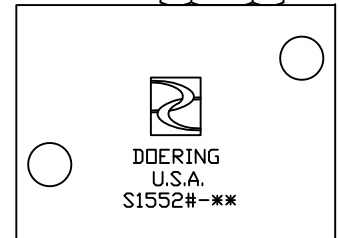
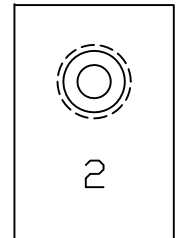
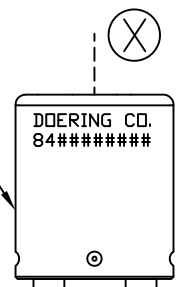
Doering DNV Series
Cartridge Needle Valve

Graphic Symbol:
Flow Control and Check Valve
Spec. Sheets 1201273, 1201552, 1202025, 1202937
Order Housing and Valves Separately.



Assembly may be orientated in any position.

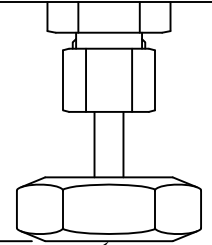
Doering 2PB Series
Pilot Cartridge Valve
Order 84#####0
or 84#####1



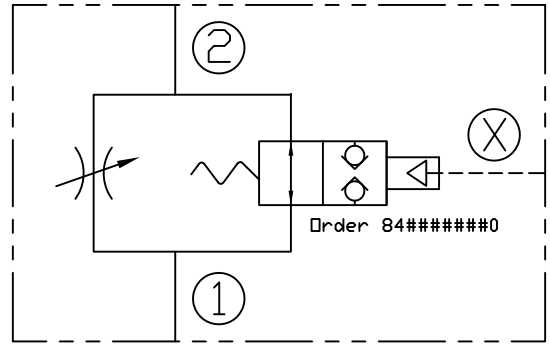
INCH
METRIC

2.25
57.2

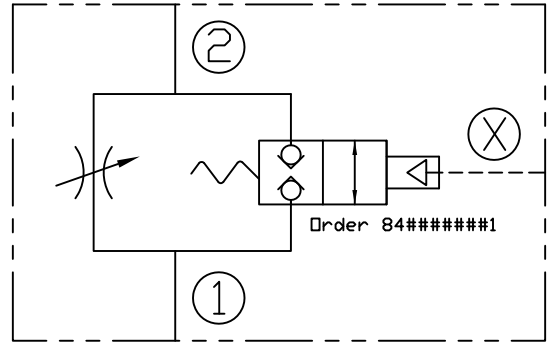
Doering DNV Series
Cartridge Needle Valve



Graphic Symbol:
Flow Control and Normally Open Pilot to Close Valve
Spec. Sheets 1200755, 1201076, 1201273, 1201317, 1201552
Order Housing and Valves Separately.

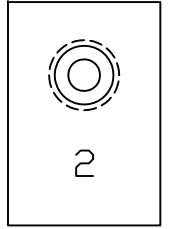


Graphic Symbol:
Flow Control and Normally Closed Pilot to Open Valve
Spec. Sheets 1200754, 1201280, 1201273, 1201424, 1201552
Order Housing and Valves Separately.



Assembly may be orientated in any position.

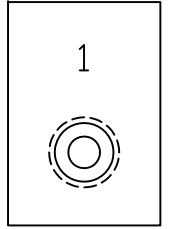
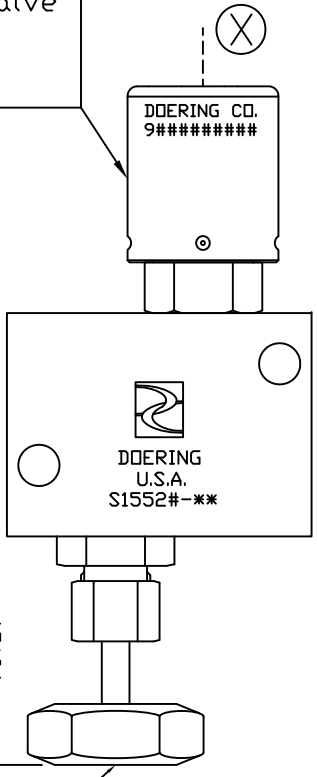
Doering PDC Series
Pilot Cartridge Valve
Order 90#####
or 94#####



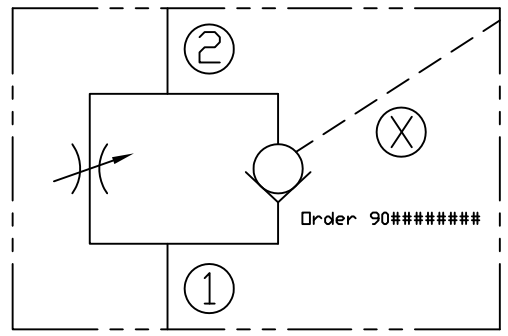
INCH
METRIC

2.25
57.2

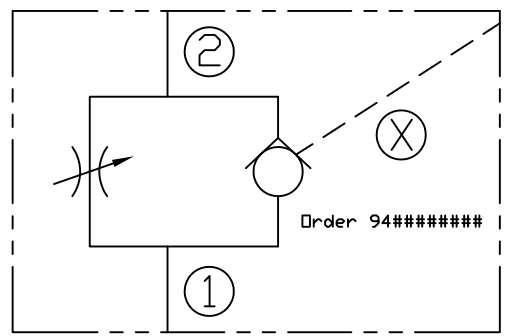
Doering DNV Series
Cartridge Needle Valve



Graphic Symbol:
Flow Control and Pilot to hold Closed Check Valve (PCV).
Spec. Sheets 1201273, 1201552 and more under PDC.
Order Housing and Valves Separately.

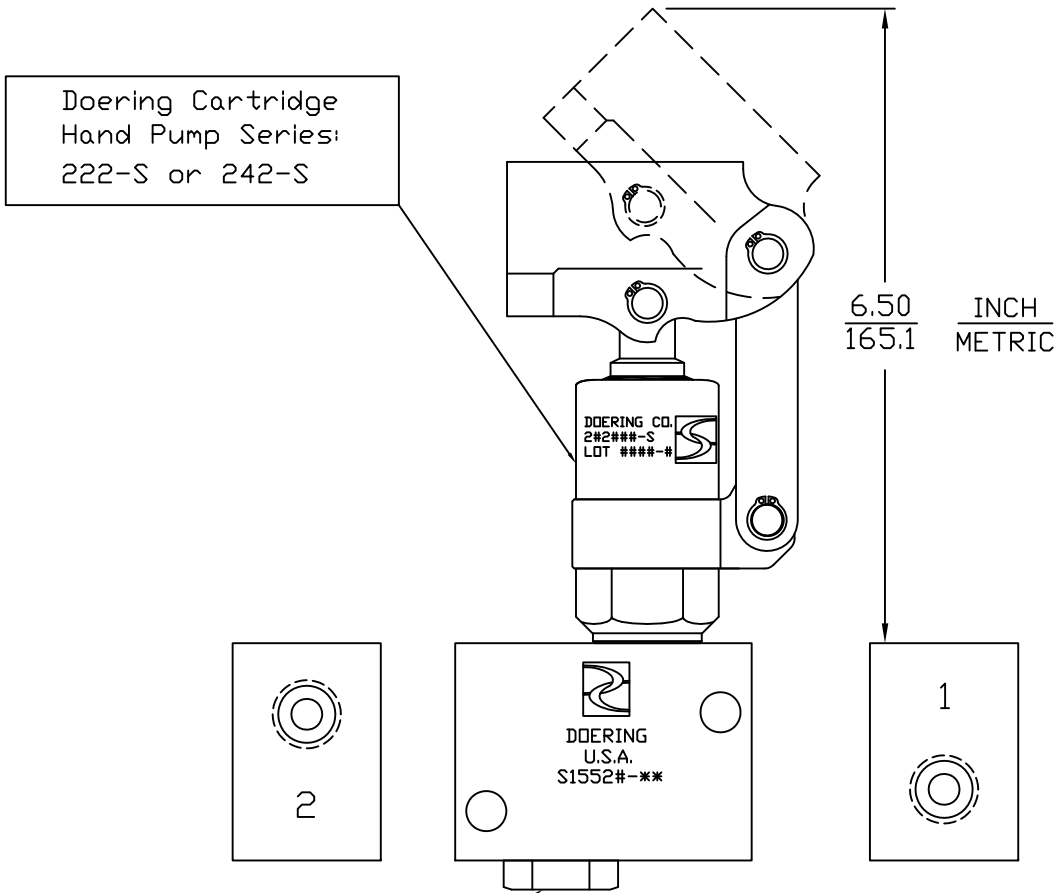
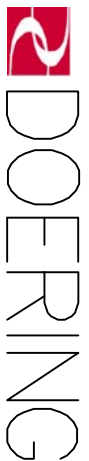


Graphic Symbol:
Flow Control and Pilot to hold Open Check Valve (POC).
Spec. Sheets 1201273, 1201552 and more under PDC.
Order Housing and Valves Separately.



Assembly may be orientated in any position.

6343 RIVER ROAD SE ■ CLEAR LAKE, MN 55319 USA
 Telephone: 320-743-2276 ■ Fax: 320-743-3723
 mailbox@doering.com ■ www.doering.com



Doering Cartridge
 Hand Pump Series:
 222-S or 242-S

Doering DCV Series
 Cartridge Check Valve

Schematic with 222-S or 242-S
 Series Doering Pump in Cavity A.
 and DCV Series Check Valve in Cavity B.

