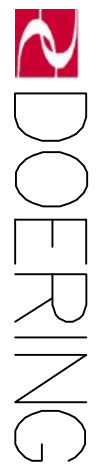
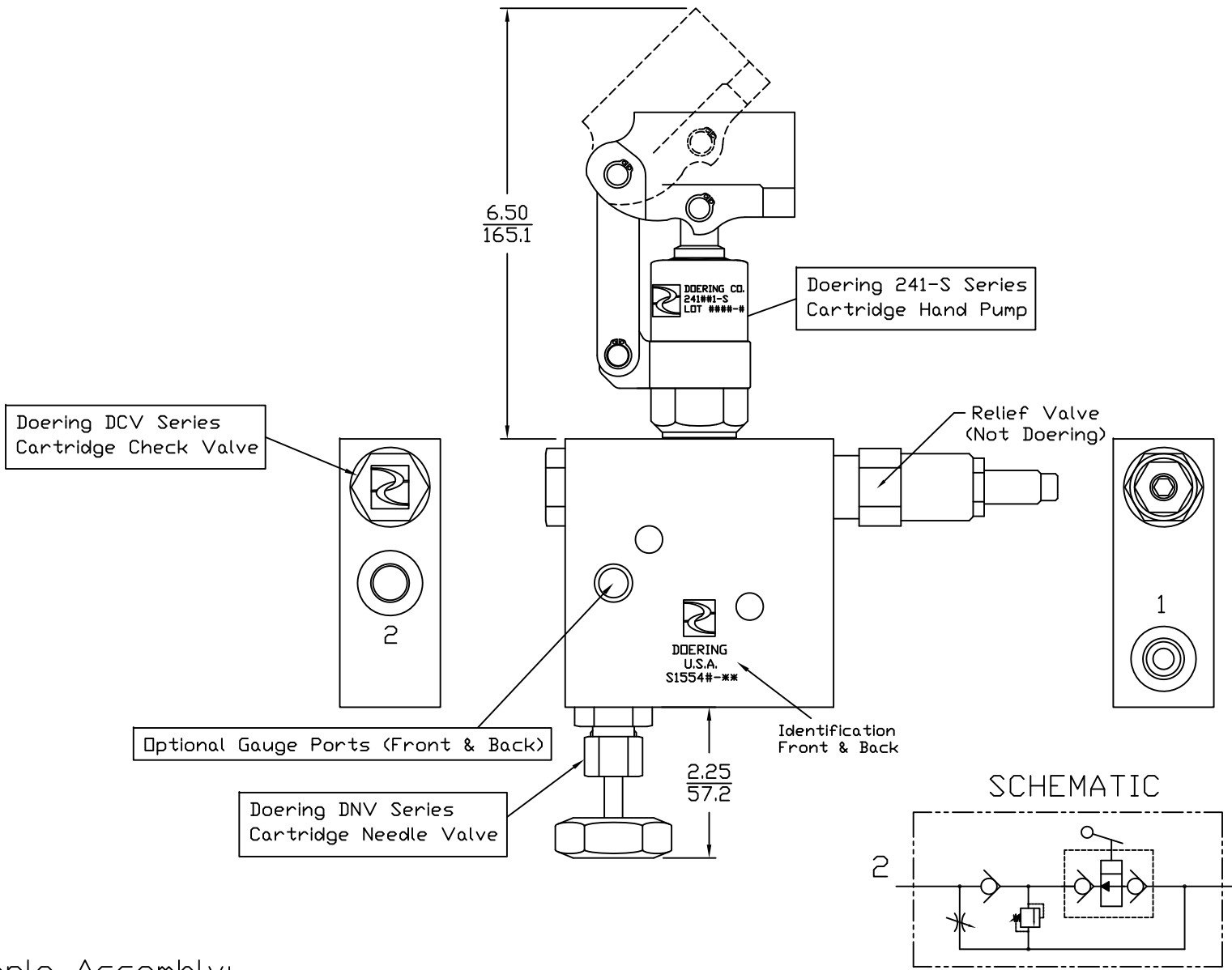


ORDER INFORMATION: { Housing Only.
 S1554 - { Order Pump and Valves Separately.

Gauge Port Options Front and Back (2 PL.)	Ports 1 & 2	Material Option, Pressure Rating
Blank No Gauge Ports	1 (1/8 NPT)	Blank (6061 Aluminum) 3,000 PSIG
T1 (1/8 NPT)	2 (1/4 NPT)	S (304 Stainless) 5,000 PSIG
T2 (1/4 NPT)	3 (3/8 NPT)	S316 (316 Stainless) 5,000 PSIG
T4 (SAE4, DRB)	4 (SAE4, DRB)	
TG4 (G 1/4-19 BSPP)	G4 (G 1/4-19 BSPP)	
	6 (SAE6, DRB)	
	G6 (G 3/8-19 BSPP)	

S1554 Series Housing
 Designed for use with
 241-S Series Doering
 Cartridge Hand Pump
 (Pumps 1 to 2)





Example Assembly:
 Order Components Separately.

- S1554#-## Doering Housing
- 241###-S Doering Cartridge Pump, Ref. Spec. Sheet 241##
- DCV-#-10-#-#-### Doering Check Valve, Spec. Sheet 1202025
- DNV-K-10-#-###-### Doering Needle Valve, Spec Sheet 1201273
- Relief Valve, Not Available through Doering Company at this time.
- Relief Valve must relieve Back to T Port. See Flow path on Page 1.
- Gauge, Not Available through Doering at this time.

S1554 Series Housing
 Illustrated with
 241 Series Pump, Check Valve,
 Needle Valve & Relief Valve