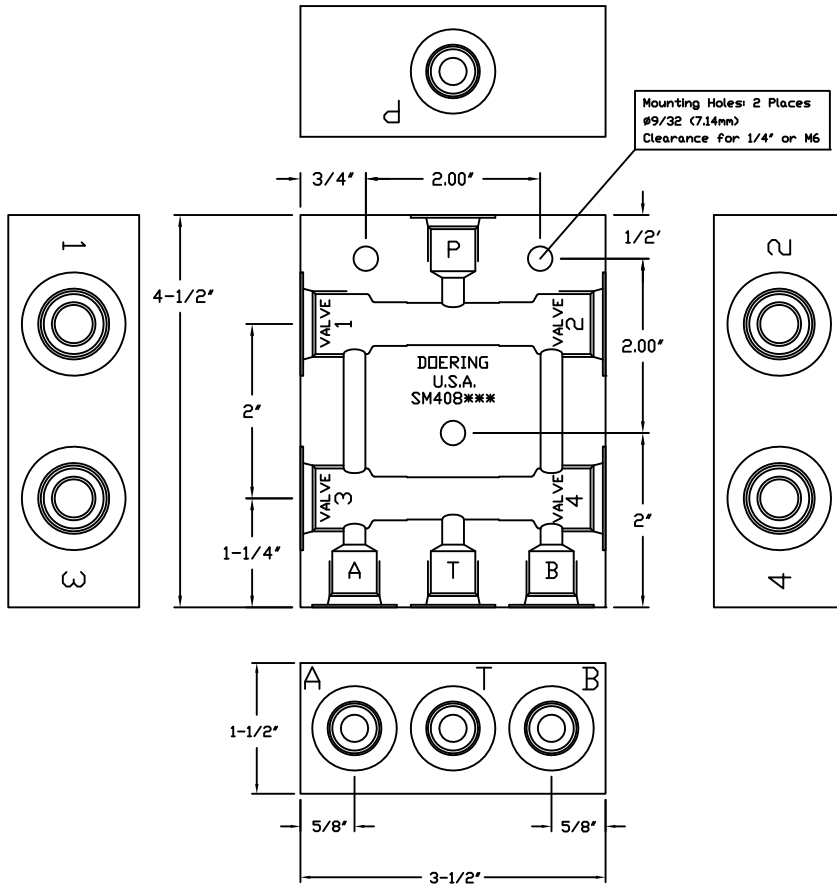
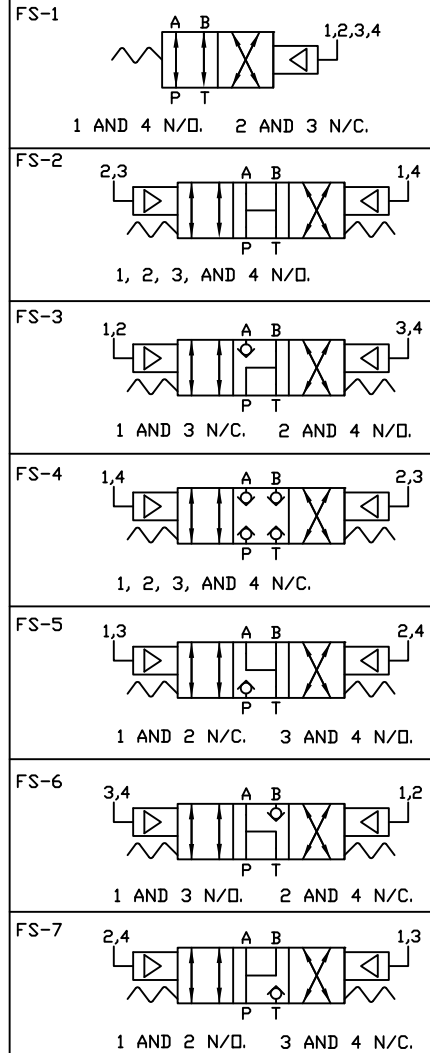


## 4 WAY POPPET FUNCTIONS USING FOUR, 2 WAY POPPET VALVES



**CONTROL OPTIONS (FUNCTIONAL SYMBOLS)  
 VALVE POSITIONS AND TYPES USED.**  
 N/C = NORMALLY CLOSED  
 N/O = NORMALLY OPEN  
 Proper Valve Selection and Assembly is required to achieve functionality corresponding Functional Symbol (FS) required for the application.  
 FS-# (Select Functional Symbol)



**ORDER INFORMATION:**  
 SM408-

{ Housing Only. Order 4 Cartridge Valves Separately, based on Functional Symbol (FS-#).

Ports A,B,P,T	Material	Option	Pressure Rating
1 (1/8 NPT)	Blank	(6061 Aluminum)	3,000 PSIG
2 (1/4 NPT)	S	(304 Stainless)	5,000 PSIG
3 (3/8 NPT)	S316	(316 Stainless)	5,000 PSIG
4 (SAE4, ORB)			
G4 (G 1/4-19 BSPP)			
6 (SAE6, ORB)			
G6 (G 3/8-19 BSPP)			

**PILOT VALVE SELECTION:**

In making valve ratio selection, note Valves 1 and 2 are effected by inlet pressure (P). Valves 3 and 4 may see full pressure on the side port and only Tank return line pressure on the bottom port. Valves 3 and 4 may be lower ratio.

Note the 2" Ctr. to Ctr. distance. This is allowance for Actuator (A) diameters of the valve pilots.

See Spec. Sheets 2PB N/C and 2PB N/O for Valve Ordering information. Valves must be double blocking (bi-directional).

The SM408\*\*\* Housings Require Valves to fit C-8502 (8-2) Cavities. Reference Cavity Drawing 1200630