

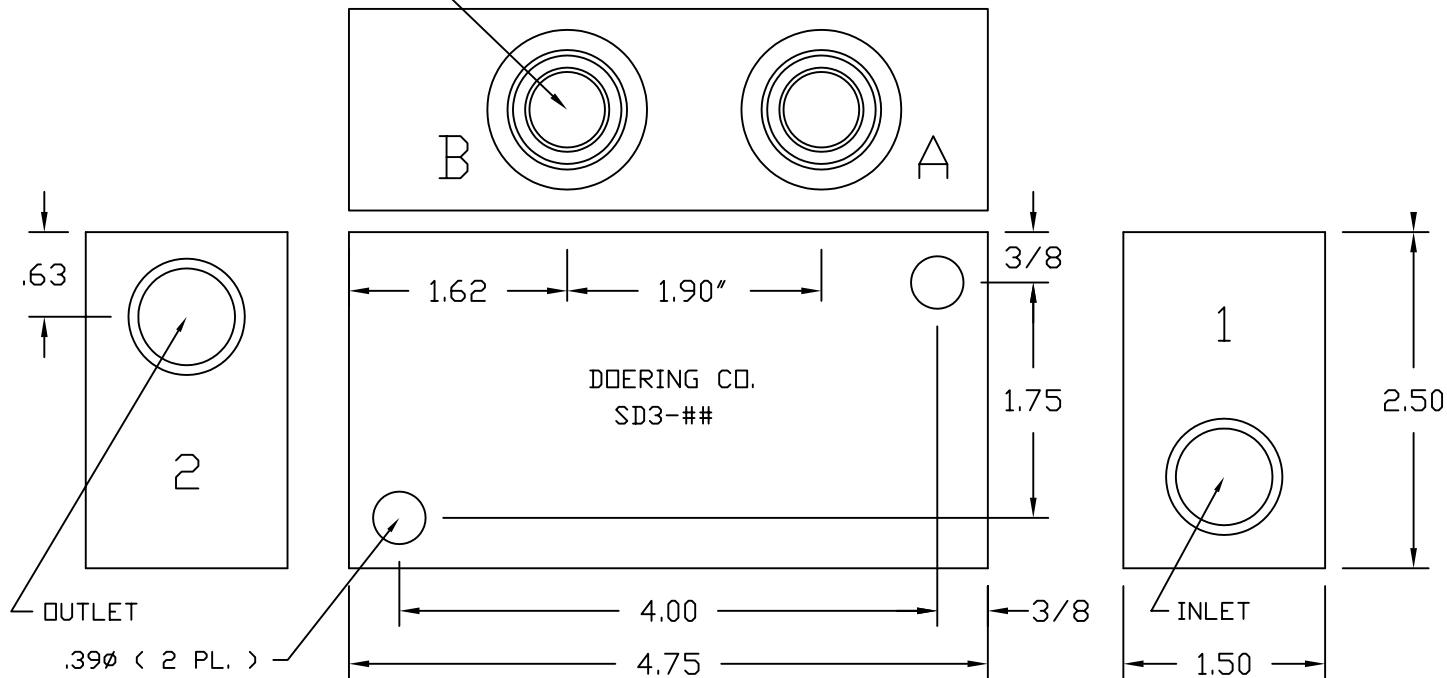
Housing Specifications:

Use No. 1 port for pressure inlet.
 Use No. 2 port for pressure outlet.
 Pressure on port 1 must be greater than
 pressure on port 2.
 Mounting holes: .39Ø (Clearance for 3/8Ø)
 Material: Stainless Steel

Function and Valve installation information:

Pilot Both Valves Simultaneously.
 Cavity A: Install valve for Stage 1 Decompression.
 Stage 1 Valve opens first due to the high ratio.
 Stage 1 Valve installed in Cavity A has the smallest orifice
 and provides the decompression function.
 Cavity B: Install valve for Stage 2, Higher Flow
 Stage 2 Valve opens when system pressure drops to a point
 determined by the pilot ratio. Pilot pressure times the
 ratio determines the approximate system pressure,
 opening point of this valve.

C-8542 Valve Cavity (10-2)
 Includes Cavities A & B



| STAINLESS ORDER NO: | ALUMINUM ORDER NO: | INLET AND OUTLET PORTS |
|------------------------|-----------------------|------------------------|
| SD3-2S | SD3-2 | 1/4 NPT |
| SD3-3S | SD3-3 | 3/8 NPT |
| SD3-5S | SD3-5 | 1/2 NPT |
| SD3-6S | SD3-6 | SAE6 (O-RING PORTS) |
| SD3-8S | SD3-8 | SAE8 (O-RING PORTS) |

NOTE: CARTRIDGE VALVES ORDERED SEPARATELY
 SELECT APPROPRIATE VALVES BASED ON RATIO REQUIRED

HOUSING FOR TWO STAGE
 DECOMPRESSION FUNCTION

6343 RIVER ROAD SE ■ CLEAR LAKE, MN 55319 USA
 Telephone: 320-743-2276 ■ Fax: 320-743-3723
 mailbox@doering.com ■ www.doering.com

