

SPECIFICATIONS:

Pilot operated cartridge check valve. Normally open. Pilot to close passage between ports one and two.

Valve will also function as a Pilot Operated Relief valve. See notes regarding pilot pressure.

Maximum recommended system pressure (ports one and two) 5,000 PSI.

Pilot Pressure Range, 50 PSI Min. to 5000 PSI Max.
Pilot minimum may be lower if valve is used as a pilot operated relief valve.

Fluid temperature -45°F, (42.7°C) to 200°F, (93.3°C)
Install Cartridge valve using 1" wrench
Valve should screw in freely to the Mount Seal.
Final tightening to 20 foot pounds torque.
Use lubricant on external oil seals and mounting threads.

Features

KEY

1. No. 1 working port
2. No. 2 working port
3. Seat, Heat Treated Stainless
Also see Seat Options.
4. Poppet, Heat Treated Stainless
5. Poppet Spring, Stainless Steel
6. Seat Saver Piston Assembly
7. Vent Port (2 Places)

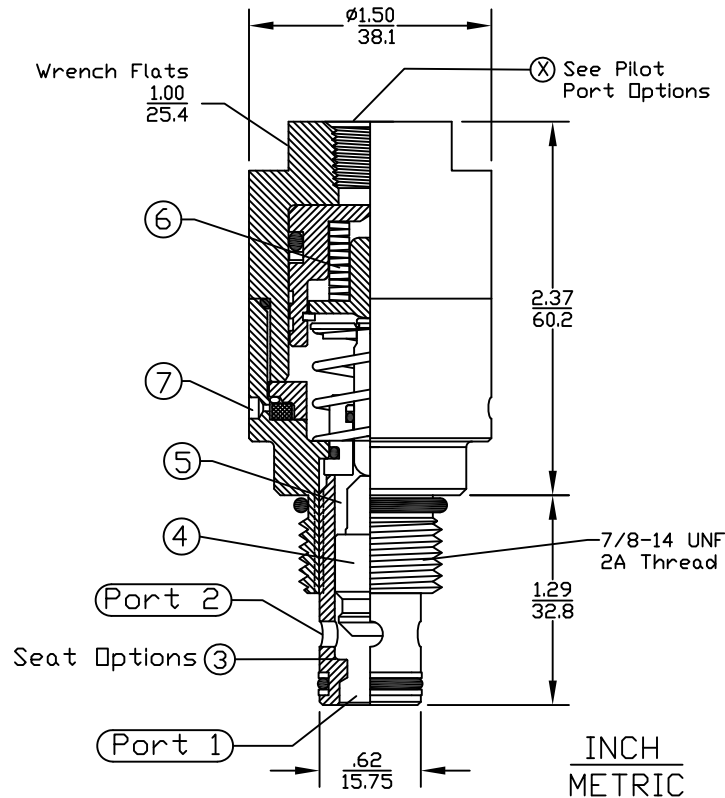
13:1 PILOT RATIO:

Area of pilot piston is 13 X larger than seat area.
To determine Minimum Pilot pressure required, follow these steps:

- (1) Multiply the maximum possible system pressure X 1.1 = SM (System Max.)
- (2) Divide SM by 13 = MP (Min. Pilot)

Note: MP is minimum pilot pressure needed for normally open / pilot to close valve function. If pilot pressure falls below MP, the valve will function as a pilot operated relief valve.

CARTRIDGE VALVE



CAVITY

Cavity C-8542 (Industry 10-2)

Form Tool: FT-8542

Call for source information.

Cavity Drawing Spec. Sheet No. 1200621

Visit www.Doering.com and enter Spec. sheet 1200621. in 'document search' box.

HOUSING

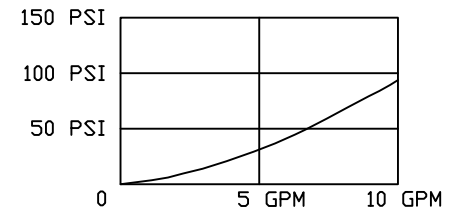
Line Mount Housings:
Spec. Sheets 1200674 and 1201455.

Visit www.Doering.com and enter Spec. sheet number in 'document search' box.

Doering Company also offers:
Custom Housings and Manifolds.
Materials include:
Aluminum, 304 SST., 316 SST.

Pressure Drop/Flow Chart.

Orifice ϕ .28 (Cv 1.0)



CARTRIDGE VALVE ORDERING INFORMATION:

Valve Number: 904#95#13##

SEAT OPTIONS, Ref. Key 3

Blank = Hard Seat, Standard Hydraulic Test
K = Kel-F Soft Seat, Bubble Tested

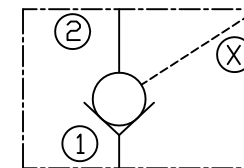
(X) PILOT PORT OPTIONS

- 1 (1/8 NPT)
- 2 (1/4 NPT)
- 4 (SAE4, DRB)
- G4 (G 1/4-19 BSPP)
- 6 (SAE6, DRB)
- G6 (G 3/8-19 BSPP)

SPRING OPTIONS, POPPET BIAS Value in PSI Crack, Ref. Key 5

- 00 = NO SPRING
03 = STAINLESS STEEL
25 = STAINLESS STEEL

POC SERIES



Check Valve, Normally Open, Pilot to Close

6343 RIVER ROAD SE ■ CLEAR LAKE, MN 55319 USA
Telephone: 320-743-2276 ■ Fax: 320-743-3723
mailto:doering.com ■ www.doering.com



DOERING