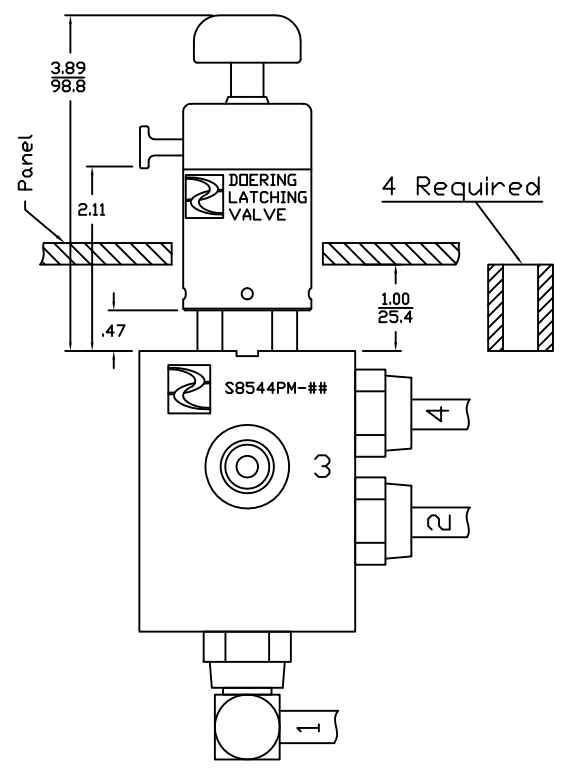
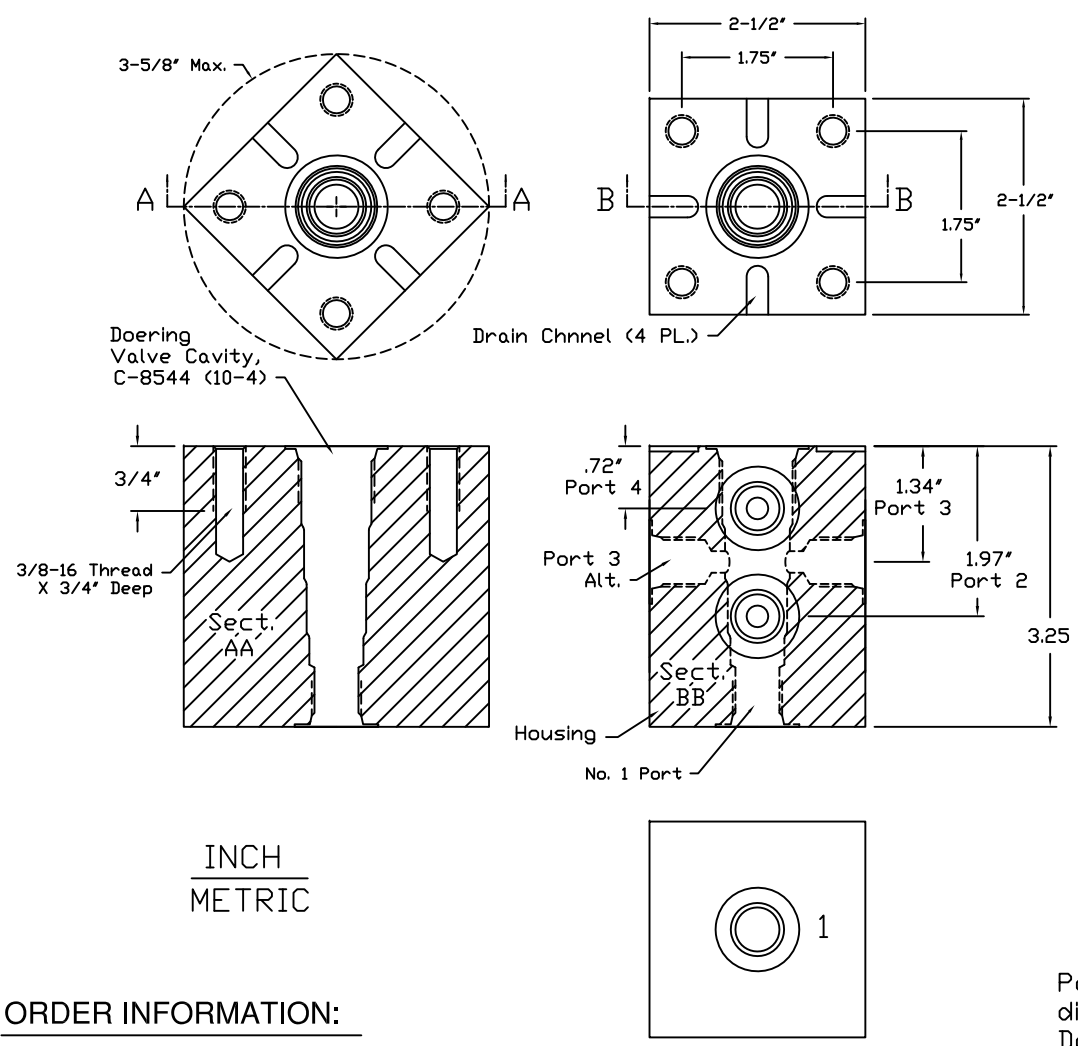


Illustration Assembly scaled with optional 1" Stand Off Spacers between Panel Mount Housing and back side of panel face material.



Panel Mount housings may be mounted directly to the site panel, or Doering SØ- Series Stand Off Spacers may be used to improve access to the valve wrench hex area or to control the protrusion of the valve from the panel face. Please see Doering SØ- Series Stand Off Spacers on Spec. Sheet 1203290.

ORDER INFORMATION:

S8544PM-

Ports 1, 2, 3 & 4	Material	Option, Pressure Rating
1 (1/8 NPT)	Blank	(6061 Aluminum) 3,000 PSIG
2 (1/4 NPT)	S	(304 Stainless) 5,000 PSIG
3 (3/8 NPT)	S316	(316 Stainless) 5,000 PSIG
4 (SAE4, ØRB)		
G4 (G 1/4-19 BSPP)		
6 (SAE6, ØRB)		
G6 (G 3/8-19 BSPP)		

Note: Port 3 Alternate Plug Not Supplied.

Doering SPM Series
Doering Panel Mount Housing