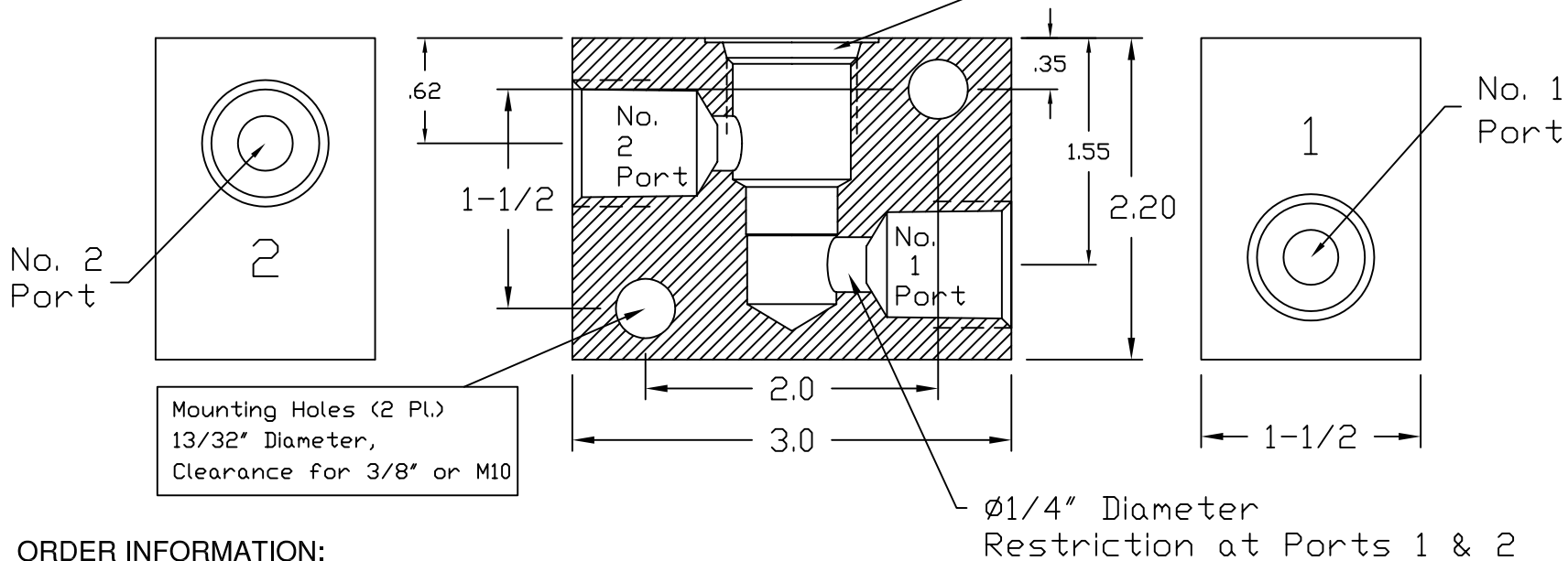


Identification  
Front & Back

Valve Cavity:  
Doering C-8502  
Industry 8-2



**ORDER INFORMATION:**

S8502W-

Ports 1 & 2

- 1 (1/8 NPT)
- 2 (1/4 NPT)
- 3 (3/8 NPT)
- 4 (SAE4, □RB)
- 5 (1/2 NPT)
- 6 (SAE6, □RB)
- 8 (SAE8, □RB)

Material Option, Pressure Rating

Pressure Note: Double pressure rating for Port 1 only.  
 Applies to Port Sizes -1, -2, -3, -4 and -6

Blank	(6061 Aluminum)	3,000 PSIG
S	(304 Stainless)	5,000 PSIG
S316	(316 Stainless)	5,000 PSIG

Doering Line Mount Housing for  
Cartridge Valve, Wide Body Style.

Also see Spec. Sheet No. 1200672  
for smaller Line Mount body style.

Also see Spec. Sheet No. 1202981  
for Panel Mount Housing.