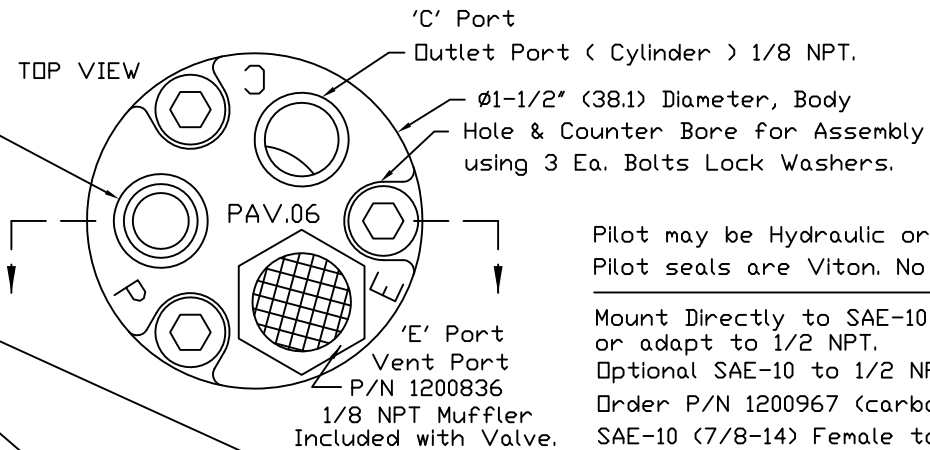


'P' Port  
 Pressure Inlet Port, 1/8 NPT  
 300 PSI (20 bar) Maximum  
 Controls Air or Gas.  
 Verify material compatibility.

Stainless Steel Fasteners  
 3 Used in Assembly:  
 P/N 1200984 Bolts, 10-24 X 1-1/2"  
 (5/32" Socket Hex)  
 P/N 1200985 Lock Washers, 10-24



Ø1-1/2" (38.1) Body, Aluminum  
 Optional: 303 or 316 SST.

Poppet Style Insert Valve.  
 O-Ring Seal, Viton  
 Sleeve for Insert Valve

Modify Valve Number for PSI.  
 Valve Shift (crack) Pressure:

11N****##VV (##=20, 21, 30, 31)
0050 = 50 PSI Spring
0075 = 75 PSI Spring
0300 = 300 PSI Spring
0350 = 300 PSI Spring
2000 = 2000 PSI Spring

Additional crack pressures  
 available From 400 to 1,900 PSI.

Note: Spring chamber vents  
 through E port.

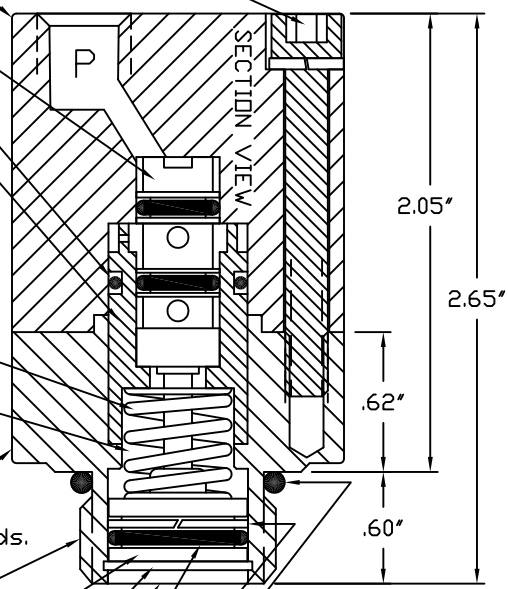
1-1/4" (31.75) Hexagon Mount, SST.  
 Wrench For Installation @ 20 Foot-Pounds.

Fits ORB Port, SAE-10 (7/8-14 THD.)

Pilot Piston, Stainless Steel  
 5000 PSI (350 bar) Limit.

Retaining Ring for Pilot Piston, SST.

Pilot Port (X)



SAE O-Ring, Viton

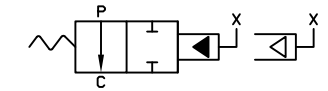
Back Up Ring, Viton

Pilot Piston O-Ring, Viton

Pilot may be Hydraulic or Pneumatic.  
 Pilot seals are Viton. No Teflon.

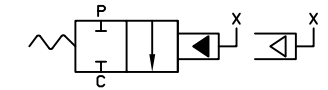
Mount Directly to SAE-10 ORB Port  
 or adapt to 1/2 NPT.  
 Optional SAE-10 to 1/2 NPT Adapter:  
 Order P/N 1200967 (carbon steel) or 1200967-S316  
 SAE-10 (7/8-14) Female to 1/2-14 NPT Male

Order No. 11N\*\*\*\*20VV 2W, N/O, Pilot Valve.



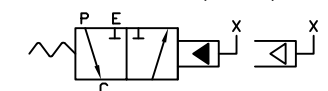
2 Way, Normally Open, Pilot to Close.

Order No. 11N\*\*\*\*21VV 2W, N/C, Pilot Valve.



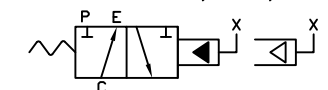
2 Way, Normally Closed, Pilot to Open.

Order No. 11N\*\*\*\*30VV 3W, N/O, Pilot Valve.



3 Way, Normally Open, Pilot to Close.

Order No. 11N\*\*\*\*31VV 3W, N/C, Pilot Valve.



3 Way, Normally Closed, Pilot to Open.

## PAV.06-NUC SERIES

Piloted Air Valve, .06 CV  
 3.0 scfm @ 50 psig, 6.0 scfm @ 100 psig  
 Pilot Operated by Hydraulic or Air.