

ORDER INFORMATION:

S3M10-

{ Housing Only.
 Order Valves Separately. Select
 based on FS (Functional Symbol).

Ports 1, 2 & 3

- 1 (1/8 NPT)
- 2 (1/4 NPT)
- 3 (3/8 NPT)
- 4 (SAE4, \square RB)
- G4 (G 1/4-19 BSPP)
- 6 (SAE6, \square RB)
- G6 (G 3/8-19 BSPP)

Material Option, Pressure Rating

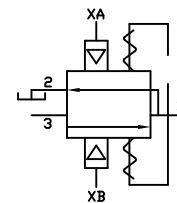
Pressure Note: Double pressure rating for Port 1 only.

Blank	(6061 Aluminum)	3,000 PSIG
S	(304 Stainless)	5,000 PSIG
S316	(316 Stainless)	5,000 PSIG

Control Options using S3M10 Housing and DOERING 2PB Valves.

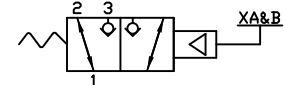
Use 2PB N/O Pressure Relief Valve in Cavity A.
 Use 2PB N/C Pressure Reducing Valve in Cavity B.
 Use Common pilot signal to valves A & B.
 Typical connections: 1 to Cyl., 2 to T, and 3 to P.
 (Regulated Pressure 1, Tank 2, Pressure Inlet 3)

FS-1



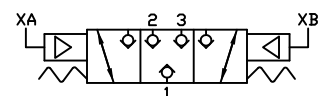
Use Normally Open, 2 Way valve cavity A.
 Use Normally Closed 2 Way valve in B.
 Use Common pilot signal to valves A & B.

FS-2



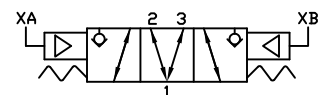
Use Normally Closed, 2 Way valves in cavities A & B. Use separate pilot signals.

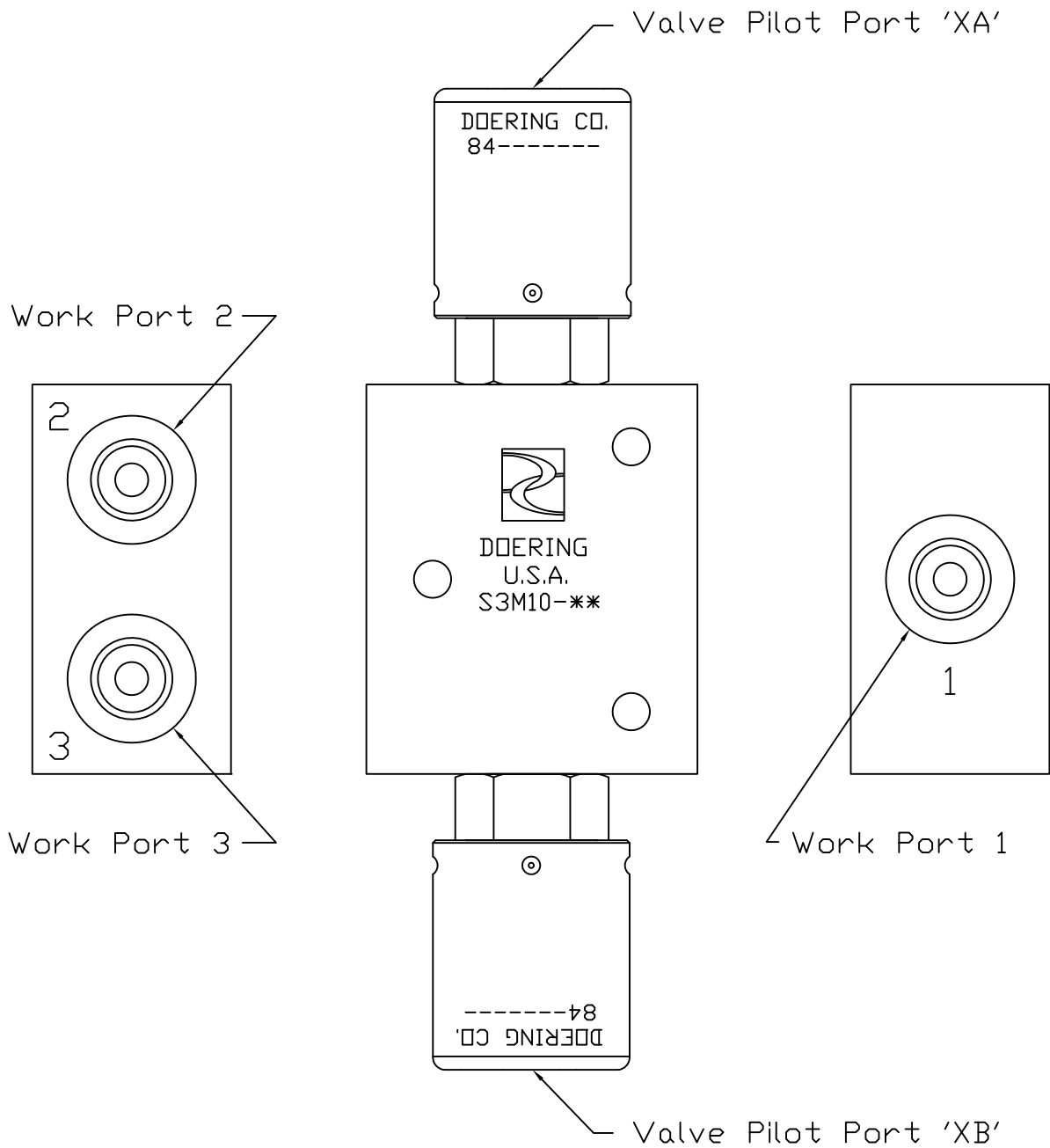
FS-3



Use Normally Open, 2 Way valves in cavities A & B. Use separate pilot signals.

FS-4





Example of Complete Assembly.

Assembly may be mounted in any position.

Please call our applications engineering department for additional assistance.