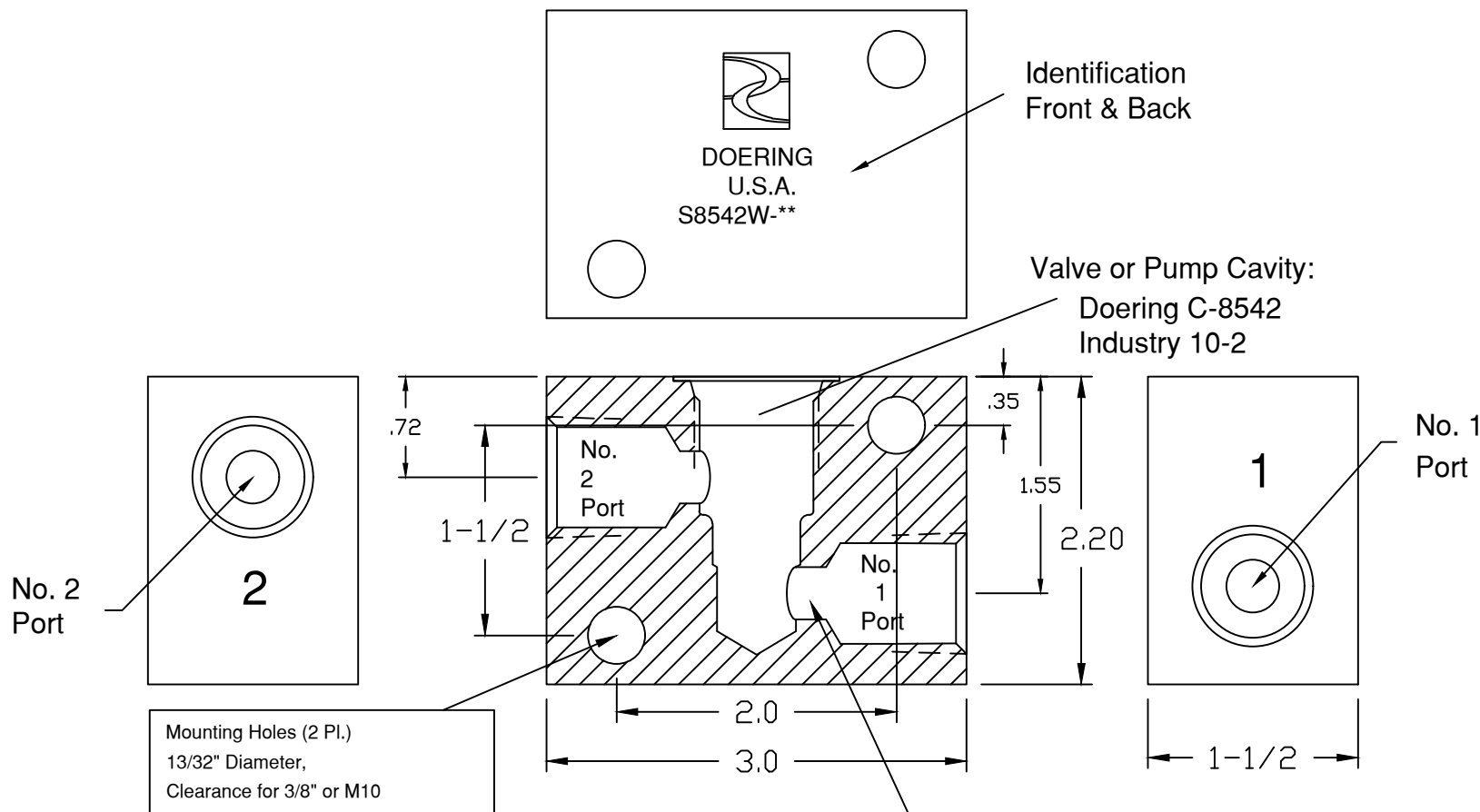


6343 RIVER ROAD SE ■ CLEAR LAKE, MN 55319 USA  
 Telephone: 320-743-2276 ■ Fax: 320-743-3723  
 mailbox@doering.com ■ www.doering.com



**ORDER INFORMATION:**

S8542W-

**Ports 1 & 2**

- 1 (1/8 NPT)
- 2 (1/4 NPT)
- 3 (3/8 NPT)
- 4 (SAE4, ORB)
- G4 (G 1/4-19 BSPP)
- 5 (1/2 NPT)
- 6 (SAE6, ORB)
- G6 (G 3/8-19 BSPP)
- 8 (SAE8, ORB)
- G8 (G 1/2-14 BSPP)

**Material Option, Pressure Rating**

Pressure Note: Double pressure rating for Port 1 only.

Applies to Port Sizes -1, -2, -3, -4 and -6

Blank	(6061 Aluminum)	3,000 PSIG
S	(304 Stainless)	5,000 PSIG
S316	(316 Stainless)	5,000 PSIG

Restriction at Ports 1 & 2  
 5/16∅ for -1, -2, -3, -4, -6  
 3/8∅ for -5 and -8

Doering Line Mount Housing for  
 Valve or Pump, Wide Body Style.

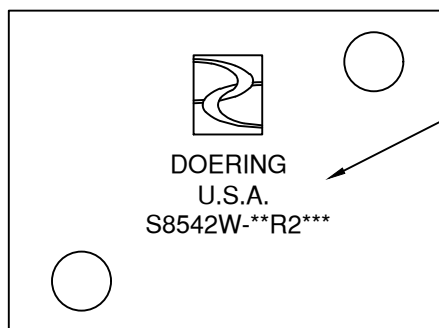
For Smaller Line Mount Body Style,  
 see 1200674 Spec. Sheet.

For Panel Mount Housing System,  
 see 1202982 and 1203290 Spec. Sheets.



DOERING

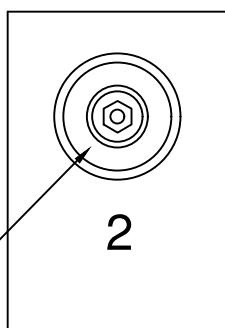
6343 RIVER ROAD SE ■ CLEAR LAKE, MN 55319 USA  
 Telephone: 320-743-2276 ■ Fax: 320-743-3723  
 mailbox@doering.com ■ www.doering.com



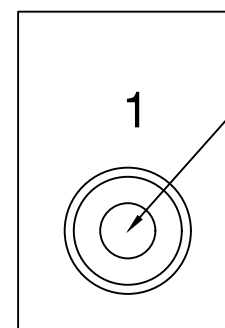
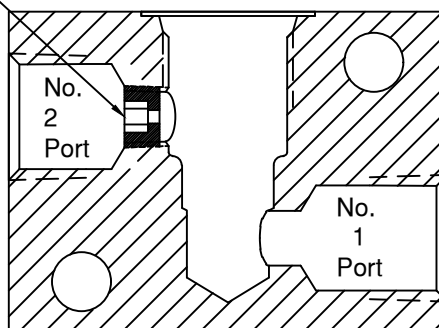
Identification  
Front & Back

R2094 is illustrated:

1/8 NPT Removable Brass Orifice Plug  
with 3/16" Internal Hex



No. 2  
Port



No. 1  
Port

**ORDER INFORMATION for Optional Restrictor at Port 2 Location Only:**

S8542W- R####

Ports 1 & 2  
See Page 1

R1 or R2 (Restrictor Port 1 or 2)  
 Followed by Restrictor Orifice Diameter  
 Orifice Diameter Options .015" to .188"  
 Tolerance ±0.005", ±0.127mm

Material Designation  
See Page 1

- Available Sizes:
- R#015 (.015", 0.38mm)
  - R#031 (.031", 0.79mm)
  - R#047 (.047", 1.19mm)
  - R#063 (.063", 1.60mm)
  - R#078 (.078", 1.98mm)
  - R#094 (.094", 2.39mm)
  - R#125 (.125", 3.20mm)
  - R#141 (.141", 3.58mm)
  - R#156 (.156", 3.96mm)
  - R#188 (.188", 4.78mm)

**Restrictor Option Notes:**  
 If Restrictor is not required, order from Page 1 only.  
 Best to only use restrictor in inlet (upstream) Port.  
 When ordered, housing is modified to receive 1/8 NPT Brass Plug  
 on the designated Port. IE: R1 or R2.  
 Restrictor Plug has 3/16" Internal Hex for installation or removal.  
 Plug is factory installed without thread sealant.  
 Restrictor Plugs may also be ordered separately.