

DESCRIPTION:

- A screw-in cartridge, needle valve.
- Close with clockwise rotation of Adjustment Knob.
- Open with counterclockwise rotation of Adjustment Knob.
- Snub Needle with 3/4" Hex Packing Nut.
- Fits Doering C-8542 Cavity (10-2)

FEATURES:

- Stainless Steel Wetted Parts
- Positive shut off for gases or liquids.

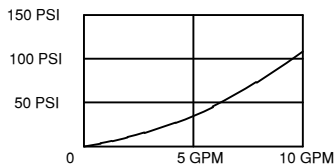
RATINGS:

- Pressures to 5,000 PSIG, Port 1
- Pressures to 3,000 PSIG, Port 2
- Temperature: -40° to 120°C

NOTES:

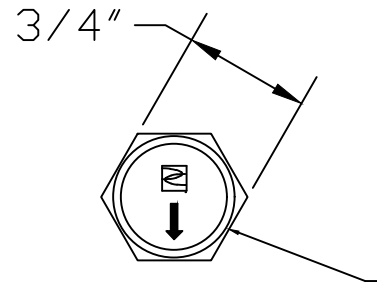
- SST = Stainless Steel material
- Install with 20 to 30 foot pounds torque on 1" Hex.
- Lubricate seals and threads before installation.

• PRESSURE DROP / FLOW

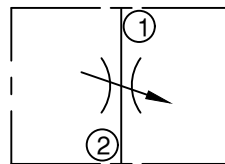
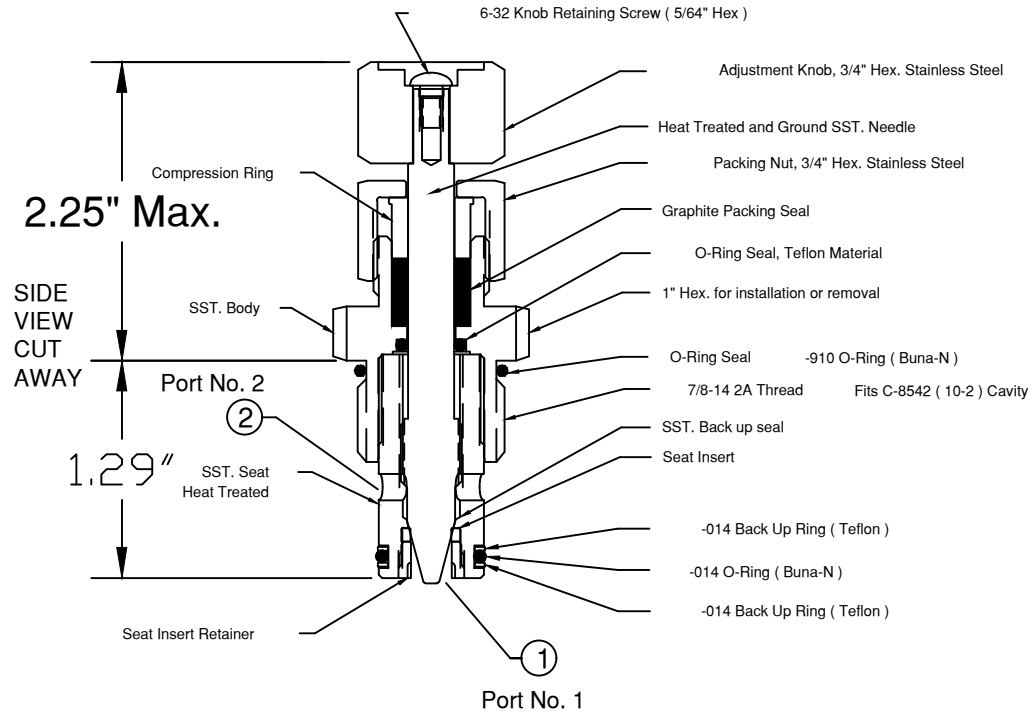


ORDER INFORMATION:

Part Number 1202026
Doering Needle Valve



Adjustment Knob, 3/4" Hex. Stainless Steel



GRAPHIC SYMBOL

**DNV SERIES
PRECISION
NEEDLE VALVE**

6343 RIVER ROAD SE ■ CLEAR LAKE, MN 55319 USA
Telephone: 320-743-2276 ■ Fax: 320-743-3723
mailto:mailbox@doering.com ■ www.doering.com



DOERING