

6343 RIVER ROAD SE ■ CLEAR LAKE, MN 55319 USA
 Telephone: 320-743-2276 ■ Fax: 320-743-3723
 mailbox@doering.com ■ www.doering.com



DOERING

Pump Socket
 May Be Rotated
 360° For
 Handle Positioning

Pump Handle

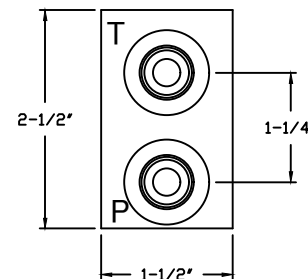
Cartridge Pump

Ø13/32 (2 PL.)
 Clearance for 3/8" or M10
 Mounting Holes

Needle Valve
 (Release Valve)

S2861-** Housing

Pressure Outlet or Gauge
 Typical (both ends)



End Porting Typical
 (both ends)

SCHEMATIC

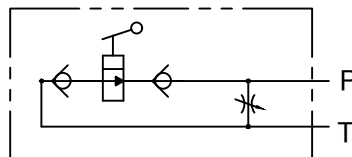


ILLUSTRATION:
 Housing S2861-#
 Cartridge Pump
 Pump Handle
 Needle Valve

Housing Pressure Rating:

Aluminum 3,000 PSI
 Stainless 5,000 PSI

P indicates pressure outlet from pump
 T indicates connection to tank or reservoir

Housing Order Information:

P and T Ports	Housing Order No. Aluminum	Housing Order No. Stainless
1/8 NPT	S2861-1	S2861-1S
1/4 NPT	S2861-2	S2861-2S
3/8 NPT	S2861-3	S2861-3S
SAE4 (O-Ring)	S2861-4	S2861-4S
SAE6 (O-Ring)	S2861-6	S2861-6S

Order housing, pump, pump handle, and needle valves separately

