

6343 RIVER ROAD SE ■ CLEAR LAKE, MN 55319 USA
 Telephone: 320-743-2276 ■ Fax: 320-743-3723
 mailbox@doering.com ■ www.doering.com



DOERING

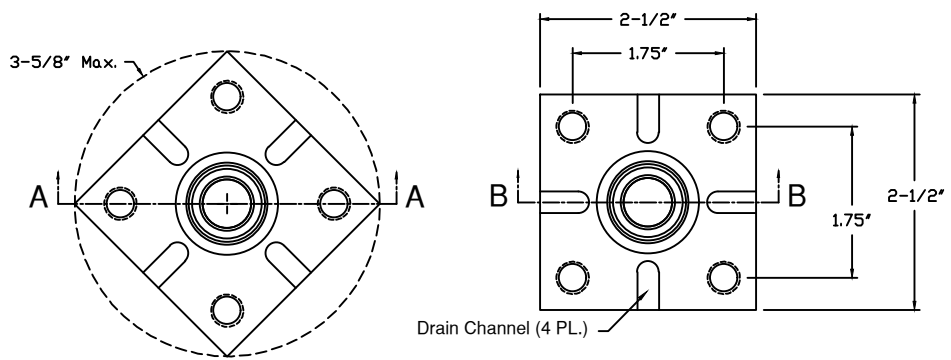
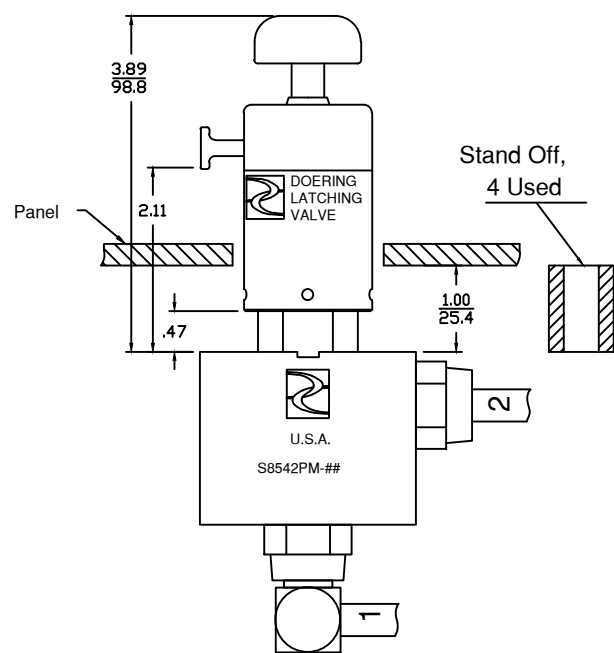
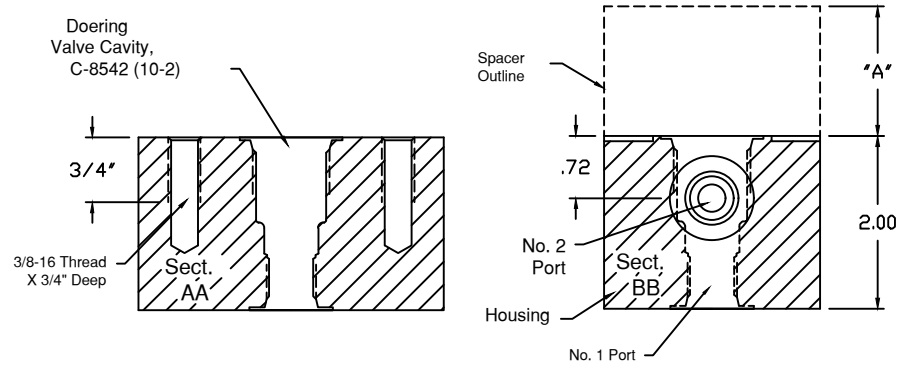
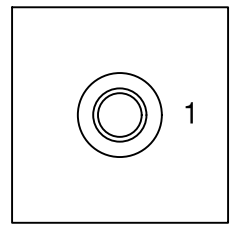


Illustration Assembly scaled with optional Stand Off Spacers between Panel Mount Housing and back side of panel face material. One Inch (25.4mm) Stand Off illustrated.



INCH
 METRIC



ORDER INFORMATION:

S8542PM-

Ports 1 & 2		Material Option, Pressure Rating	
1	(1/8 NPT)	Blank	(6061 Aluminum)
2	(1/4 NPT)	S	(304 Stainless)
3	(3/8 NPT)	S316	(316 Stainless)
4	(SAE4, ORB)		
G4	(G 1/4-19 BSPP)		
6	(SAE6, ORB)		
G6	(G 3/8-19 BSPP)		

Panel Mount housings may be mounted directly to the site panel, or Doering SO- Series Stand Off Spacers may be used to improve access to the valve wrench hex area or to control the protrusion of the valve from the panel face. Please see Doering SO- Series Stand Off Spacers on Spec. Sheet 1203290.

Doering SPM Series
 Doering Panel Mount Housing

SPEC. SHEET NO. 1202982 REV. 09