



'P' Port  
 Pressure Inlet Port, 1/8 NPT  
 300 PSI (20 bar) Maximum  
 Controls Air or Gas.  
 Verify material compatibility.

Stainless Steel Fasteners  
 3 Used in Assembly:  
 P/N 1200984 Bolts, 10-24 X 1-1/2"  
 (5/32" Socket Hex)  
 P/N 1200985 Lock Washers, 10-24

Ø1-1/2" (38.1) Body, Aluminum  
 Optional: 303 or 316 SST.

Poppet Style Insert Valve.  
 O-Ring Seal, Viton  
 Sleeve for Insert Valve

Modify Valve Number for PSI.  
 Valve Shift (crack) Pressure:

11N****##VV (##=20, 21, 30, 31)
0050 = 50 PSI Spring
0075 = 75 PSI Spring
0300 = 300 PSI Spring
0350 = 300 PSI Spring
2000 = 2000 PSI Spring
Additional crack pressures available From 400 to 1,900 PSI.

Note: Spring chamber vents through E port.

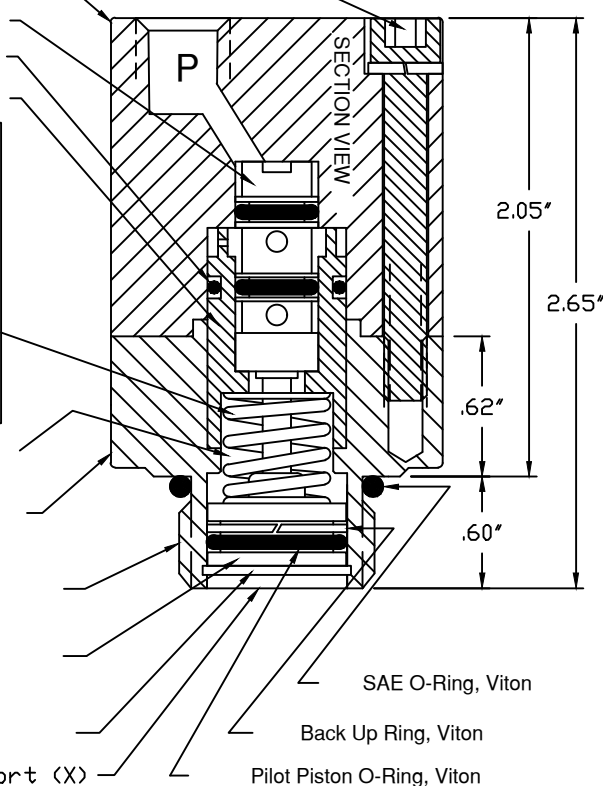
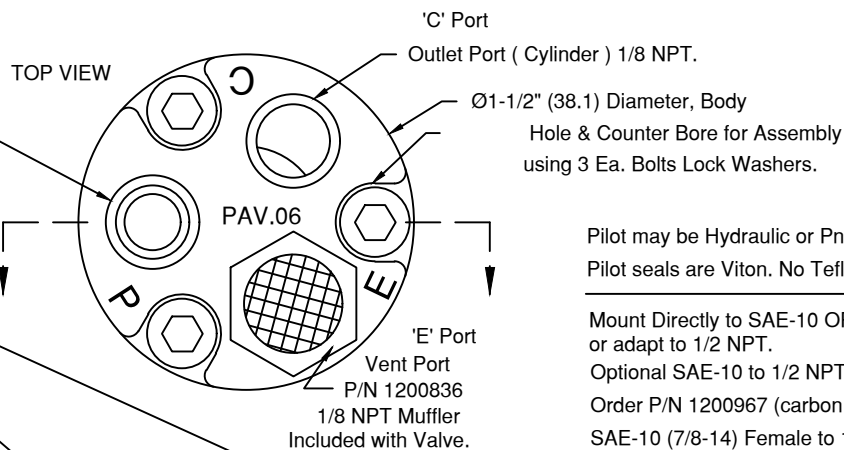
1-1/4" (31.75) Hexagon Mount, SST.  
 Wrench For Installation @ 20 Foot-Pounds.

Fits ORB Port, SAE-10 (7/8-14 THD.)

Pilot Piston, Stainless Steel  
 5000 PSI (350 bar) Limit.

Retaining Ring for Pilot Piston, SST.

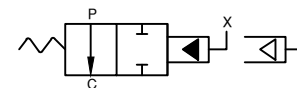
Pilot Port (X)



Pilot may be Hydraulic or Pneumatic.  
 Pilot seals are Viton. No Teflon.

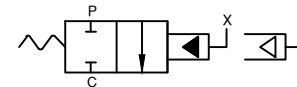
Mount Directly to SAE-10 ORB Port  
 or adapt to 1/2 NPT.  
 Optional SAE-10 to 1/2 NPT Adapter:  
 Order P/N 1200967 (carbon steel) or 1200967-S316  
 SAE-10 (7/8-14) Female to 1/2-14 NPT Male

Order No. 11N\*\*\*\*20VV 2W, N/O, Pilot Valve.



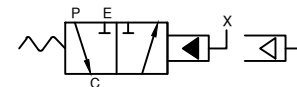
2 Way, Normally Open, Pilot to Close.

Order No. 11N\*\*\*\*21VV 2W, N/C, Pilot Valve.



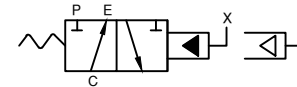
2 Way, Normally Closed, Pilot to Open.

Order No. 11N\*\*\*\*30VV 3W, N/O, Pilot Valve.



3 Way, Normally Open, Pilot to Close.

Order No. 11N\*\*\*\*31VV 3W, N/C, Pilot Valve.



3 Way, Normally Closed, Pilot to Open.

## PAV.06-NUC SERIES

Piloted Air Valve, .06 CV  
 3.0 scfm @ 50 psig, 6.0 scfm @ 100 psig  
 Pilot Operated by Hydraulic or Air.