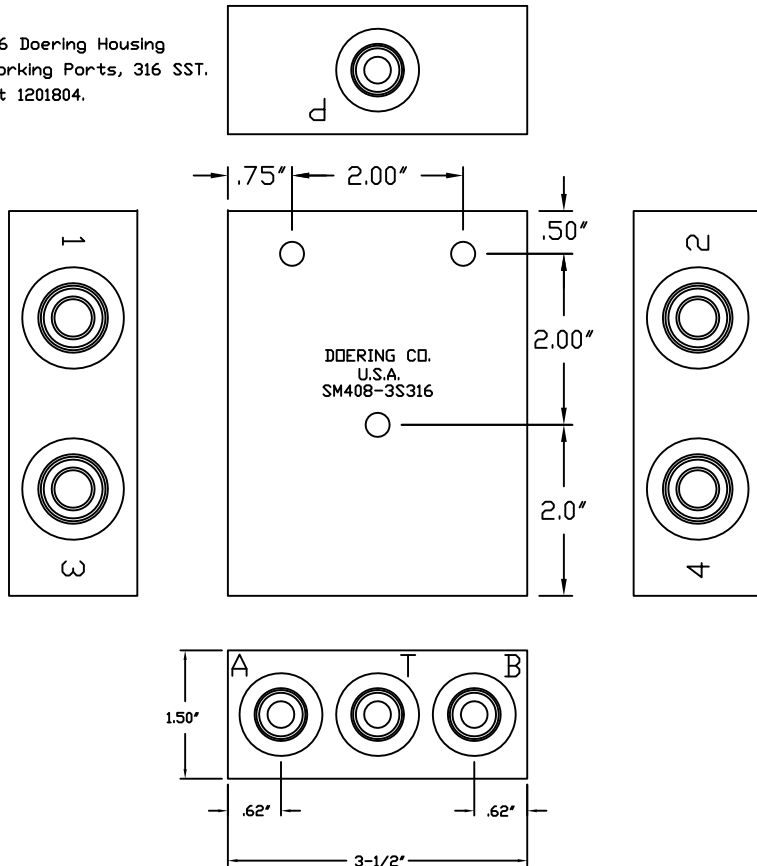


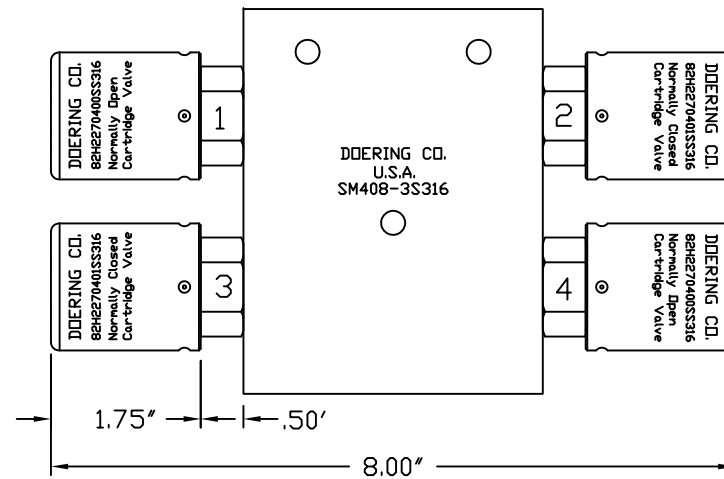
6343 RIVER ROAD SE ■ CLEAR LAKE, MN 55319 USA
 Telephone: 320-743-2276 ■ Fax: 320-743-3723
 mailbox@doering.com ■ www.doering.com

SM408-3S316 Doering Housing
 3/8 NPT Working Ports, 316 SST.
 Spec. Sheet 1201804.

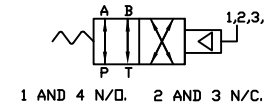


82H2270400SS316
 Doering Cartridge Valves
 Spec. Sheet 1201317
 Assembled in Locations 1 and 4

82H2270401SS316
 Doering Cartridge Valves
 Spec. Sheet 1201280
 Assembled in Locations 2 and 3



Ref. Doering Spec. Sheet 1201804, FS-1
 Use Common Pneumatic Signal to Valves at
 Locations 1, 2, 3 and 4.



Reference Only: Halliburton P/N 102408676 Assembly
 Order P/N 102408676 Assembly, includes the following:
 1 Ea. SM408-3S316 Doering Housing, 3/8 NPT Working Ports, 316 SST., Ref. Spec. Sheet 1201804.
 2 Ea. 82H2270400SS316 Doering Cartridge Valve, Normally Open (N/O), Air Pilot, 316 SST., Ref. Spec. Sheet 1201317.
 2 Ea. 82H2270401SS316 Doering Cartridge Valve, Normally Closed (N/C), Air Pilot, 316 SST., Ref. Spec. Sheet 1201280.

Assembly Drawing NO. 102408676
 Revision: DRAFT 4/4/14

DRAFT by Russ 4/4/14, CF: 13-1851
 Haliburton Part Number 102408676

SPEC. SHEET NO. 102408676 DRAFT 4/4/14

