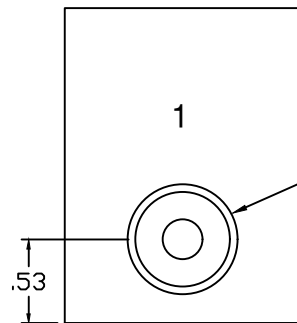


- \* 10-32 PORT AND PLUG.
- \* 1/8 SPANNER HOLES ( 2 PL. )
- \* 10-32 PORT. VENT OR PILOT.
- \* MAY BE ROTATED TO ANY POSITION

1" HEX FOR WRENCH TO REMOVE OR INSTALL CARTRIDGE

9/32Ø HOLES FOR MOUNTING ( 2 PL. )



3/8 NPT  
REF: NO. 1  
HYD. INLET PORT.

NOTE: OPPOSITE  
SIDE, REF. NO. 2  
HYD. OUTLET PORT.

Doering Valve and Housing Assembly:

Order components separately:  
82H6041681T Doering Cartridge Valve  
Spec. Sheet 1201235  
S8502-3 Doering Housing, 3/8 NPT  
Spec. Sheet 1200672

6343 RIVER ROAD SE ■ CLEAR LAKE, MN 55319 USA  
Telephone: 320-743-2276 ■ Fax: 320-743-3723  
mailto:mailbox@doering.com ■ www.doering.com

