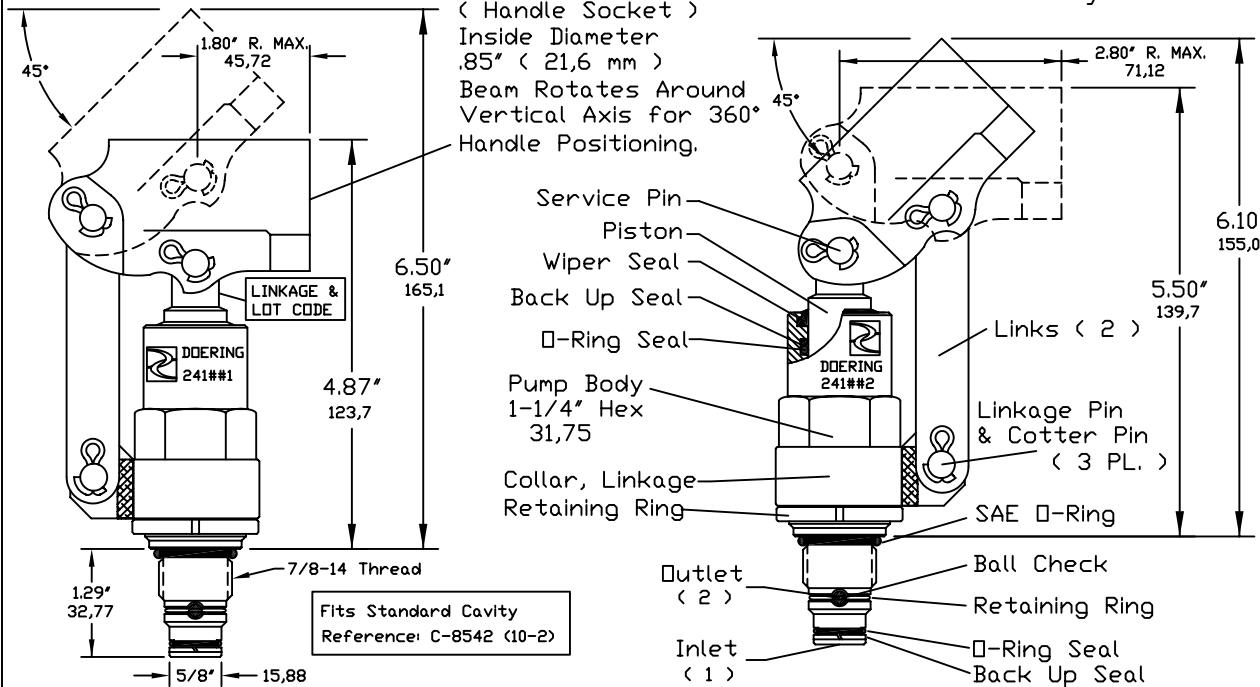


241 SERIES CARTRIDGE PUMPS

Push Style Linkage:
Push to Pressurize
Pull to Fill Cylinder

Pull Style Linkage:
Pull to Pressurize
Push to Fill Cylinder



Handle
1201459 Spec. Sheet

Cavity
Cavity Drawing:
1200621 Spec. Sheet

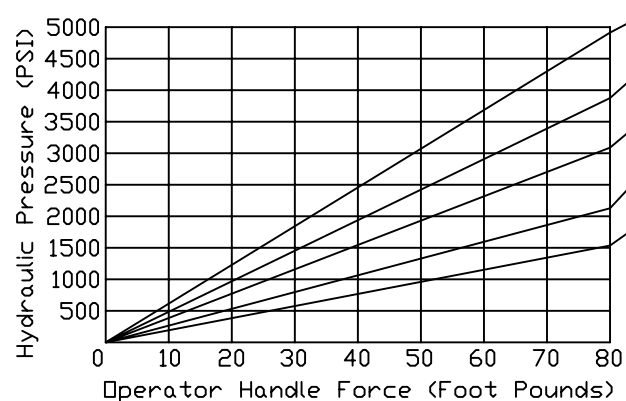
Housing
Line Mount Housings:
1200674 and 1201455
Spec. Sheets

Panel Mount Housings:
1202982 and 1202990
Spec. Sheets

Additional Feature:
Spring Loaded Inlet Check
allows operation in any
position.

PUMP SELECTION GRAPH

Maximum Safe System Pressure 5000 PSI
Do not exceed handle force of 80 Foot Pounds.

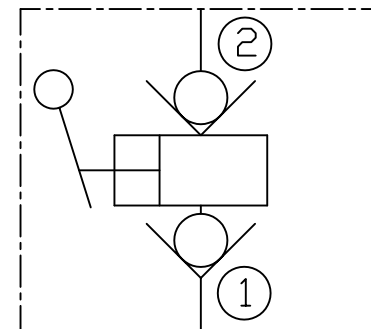


DISPLACEMENT, FULL STROKE,		PUSH STYLE ORDER NO.	PULL STYLE ORDER NO.
Cubic Inches	Cubic Centimeters		
.196	3,2cc	241501	241502
.249	4,0cc	241561	241562
.307	5,0cc	241621	241622
.442	7,2cc	241751	241752
.601	9,8cc	241871	241872

Seals:
Seals Are Buna-N with Teflon Back Up Rings
Optional Seal materials include Viton, Teflon and others.
Call for pricing on alternate seal materials.
Wiper Ring is Urethane.
Installation:
Lubricate seals.
Use 1-1/4" Wrench. Torque to approximately 50 Foot Pounds.

241 SERIES

Functional Symbol:



6343 RIVER ROAD SE ■ CLEAR LAKE, MN 55319 USA
Telephone: 320-743-2276 ■ Fax: 320-743-3723
mailto:doering.com ■ www.doering.com

