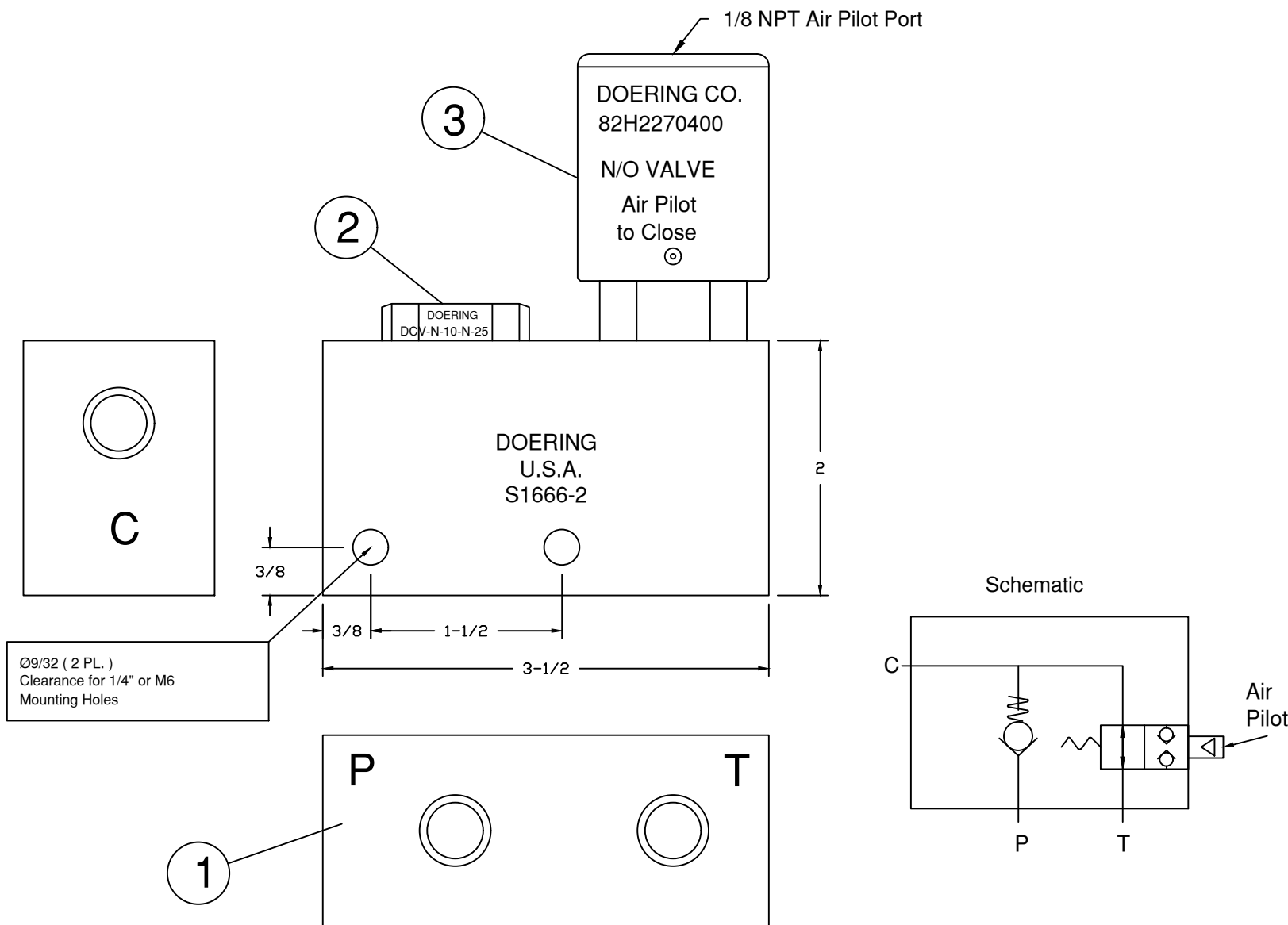


6343 RIVER ROAD SE ■ CLEAR LAKE, MN 55319 USA
 Telephone: 320-743-2276 ■ Fax: 320-743-3723
 mailbox@doering.com ■ www.doering.com



DOERING



Key Bill of Material (Components):

- | | |
|---|---|
| 1 | S1666-2 Doering Housing, 1/4 NPT, Aluminum, Spec. Sheet 1201666
Ports C, P and T are 1/4 NPT |
| 2 | DCV-N-10-N-25 Doering Check Valve, Spec. Sheet No. 1202025 |
| 3 | 82H2270400 Doering Valve, N/O, Pilot to Close, Spec. Sheet 1201317 |