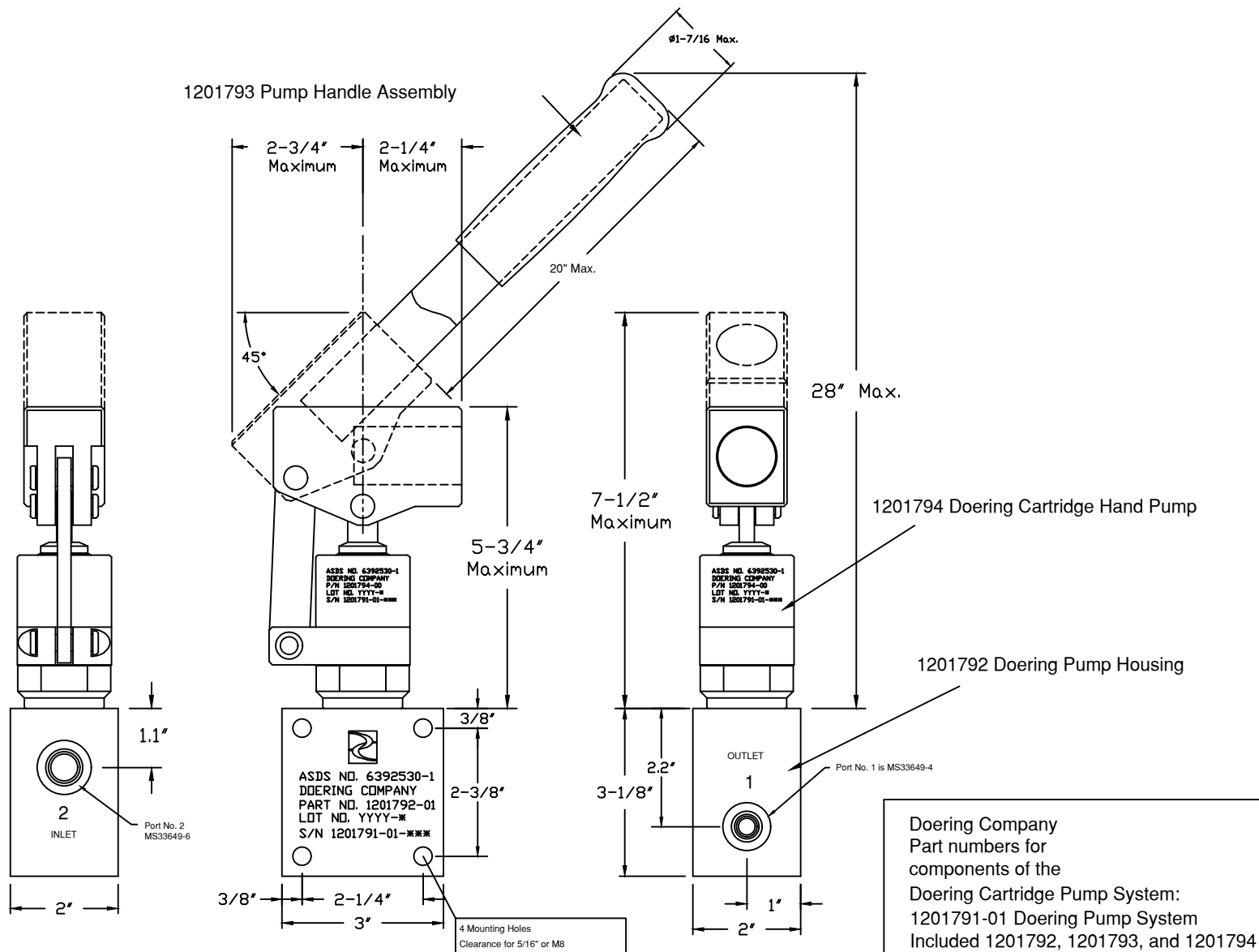


6343 RIVER ROAD SE ■ CLEAR LAKE, MN 55319 USA
 Telephone: 320-743-2276 ■ Fax: 320-743-3723
 mailbox@doering.com ■ www.doering.com



DOERING



Doering Company
 Part numbers for
 components of the
 Doering Cartridge Pump System:
 1201791-01 Doering Pump System
 Included 1201792, 1201793, and 1201794

1201792 Doering Pump Housing
 1201793 Doering Pump Handle
 1201794 Doering Cartridge Hand Pump

Order assembly:
 P/N 1201791-01 Doering Cartridge Pump System

DESIGN AND DRAWINGS ARE PROPERTY OF DOERING COMPANY
 DESIGN AND DRAWINGS MAY NOT BE DUPLICATED, REPRODUCED OR COPIED IN ANY WAY
 WITHOUT WRITTEN PERMISSION BY DOERING COMPANY, CLEAR LAKE, MINNESOTA, USA

© DOERING COMPANY, CLEAR LAKE, MINNESOTA, USA

SPEC. SHEET NO. 1201791 2009 09-14