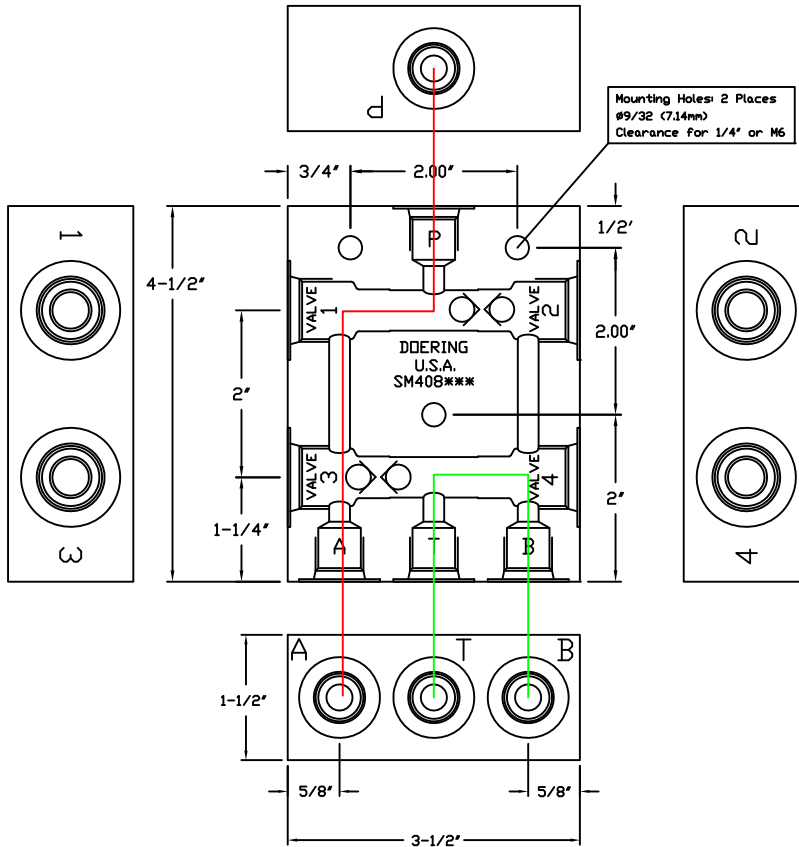
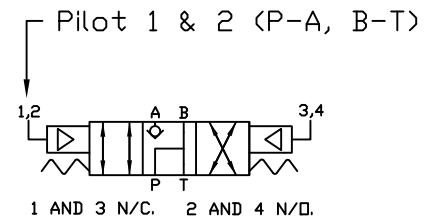


4 WAY POPPET FUNCTIONS USING FOUR, 2 WAY POPPET VALVES



CONTROL OPTIONS (FUNCTIONAL SYMBOLS)
 VALVE POSITIONS AND TYPES USED.
 N/C = NORMALLY CLOSED
 N/D = NORMALLY OPEN
 Proper Valve Selection and Assembly
 is required to achieve functionality
 corresponding Functional Symbol (FS)
 required for the application.
 FS-# (Select Functional Symbol)

FS-3



ORDER INFORMATION:

SM408-

Housing Only. Order 4 Cartridge
 Valves Separately, based on
 Functional Symbol (FS-#).

Ports A,B,P,T

Material Option, Pressure Rating

1 (1/8 NPT)	Blank (6061 Aluminum)	3,000 PSIG
2 (1/4 NPT)	S (304 Stainless)	5,000 PSIG
3 (3/8 NPT)	S316 (316 Stainless)	5,000 PSIG
4 (SAE4, ORB)		
G4 (G 1/4-19 BSPP)		
6 (SAE6, ORB)		
G6 (G 3/8-19 BSPP)		

PILOT VALVE SELECTION:

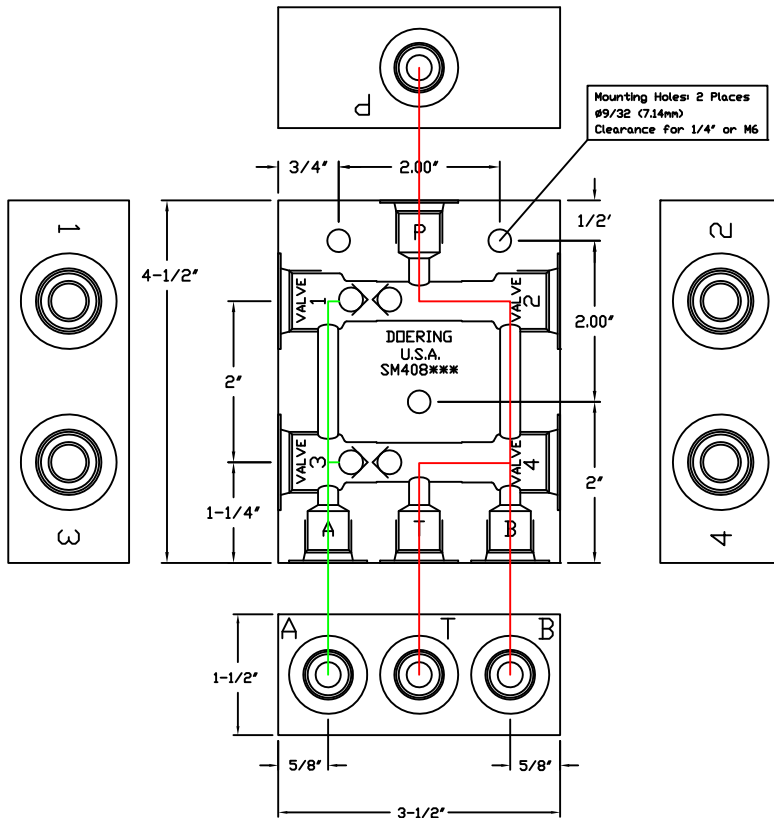
In making valve ratio selection,
 note Valves 1 and 2 are effected
 by inlet pressure (P).
 Valves 3 and 4 may see full
 pressure on the side port and
 only Tank return line pressure
 on the bottom port.
 Valves 3 and 4 may be lower ratio.

Note the 2" Ctr. to Ctr. distance.
 This is allowance for Actuator
 (A) diameters of the valve pilots.

See Spec. Sheets 2PB N/C
 and 2PB N/D for Valve Ordering
 information. Valves must be double
 blocking (bi-directional).

The SM408*** Housings Require
 Valves to fit C-8502 (8-2) Cavities.
 Reference Cavity Drawing 1200630

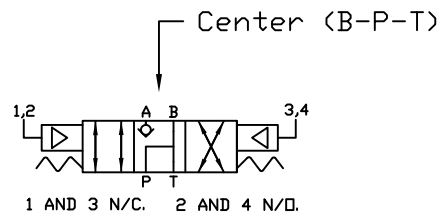
4 WAY POPPET FUNCTIONS USING FOUR, 2 WAY POPPET VALVES



Mounting Holes: 2 Places
 #9/32 (7.14mm)
 Clearance for 1/4" or M6

CONTROL OPTIONS (FUNCTIONAL SYMBOLS)
 VALVE POSITIONS AND TYPES USED.
 N/C = NORMALLY CLOSED
 N/O = NORMALLY OPEN
 Proper Valve Selection and Assembly
 is required to achieve functionality
 corresponding Functional Symbol (FS)
 required for the application.
 FS-# (Select Functional Symbol)

FS-3



ORDER INFORMATION: { Housing Only. Order 4 Cartridge
 Valves Separately, based on
 Functional Symbol (FS-#).

SM408-

Ports A,B,P,T	Material	Option, Pressure Rating
1 (1/8 NPT)	Blank	(6061 Aluminum) 3,000 PSIG
2 (1/4 NPT)	S	(304 Stainless) 5,000 PSIG
3 (3/8 NPT)	S316	(316 Stainless) 5,000 PSIG
4 (SAE4, ORB)		
G4 (G 1/4-19 BSPP)		
6 (SAE6, ORB)		
G6 (G 3/8-19 BSPP)		

PILOT VALVE SELECTION:

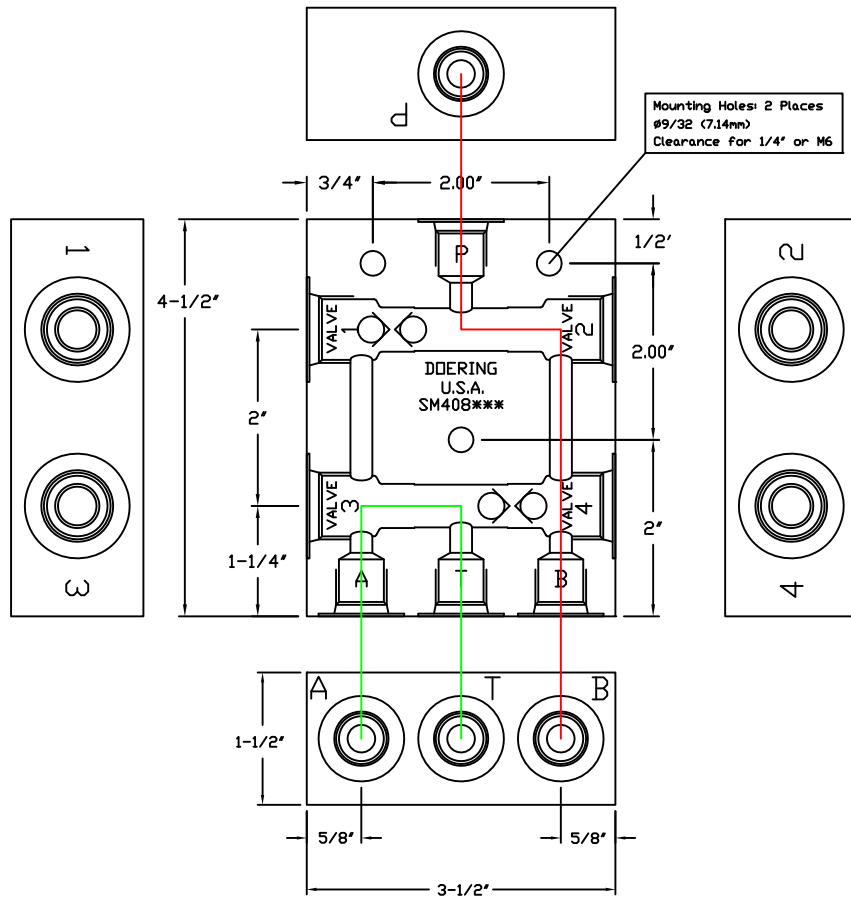
In making valve ratio selection, note Valves 1 and 2 are effected by inlet pressure (P). Valves 3 and 4 may see full pressure on the side port and only Tank return line pressure on the bottom port. Valves 3 and 4 may be lower ratio.

Note the 2" Ctr. to Ctr. distance. This is allowance for Actuator (A) diameters of the valve pilots.

See Spec. Sheets 2PB N/C and 2PB N/O for Valve Ordering information. Valves must be double blocking (bi-directional).

The SM408*** Housings Require Valves to fit C-8502 (8-2) Cavities. Reference Cavity Drawing 1200630

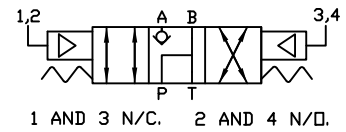
4 WAY POPPET FUNCTIONS USING FOUR, 2 WAY POPPET VALVES



CONTROL OPTIONS (FUNCTIONAL SYMBOLS)
 VALVE POSITIONS AND TYPES USED.
 N/C = NORMALLY CLOSED
 N/O = NORMALLY OPEN
 Proper Valve Selection and Assembly
 is required to achieve functionality
 corresponding Functional Symbol (FS)
 required for the application.
 FS-# (Select Functional Symbol)

FS-3

Pilot 3 & 4 (P-B, A-T)



ORDER INFORMATION:

SM408-

Housing Only. Order 4 Cartridge
 Valves Separately, based on
 Functional Symbol (FS-#).

Ports A,B,P,T	Material Option, Pressure Rating		
1 (1/8 NPT)	Blank	(6061 Aluminum)	3,000 PSIG
2 (1/4 NPT)	S	(304 Stainless)	5,000 PSIG
3 (3/8 NPT)	S316	(316 Stainless)	5,000 PSIG
4 (SAE4, ORB)			
G4 (G 1/4-19 BSPP)			
6 (SAE6, ORB)			
G6 (G 3/8-19 BSPP)			

PILOT VALVE SELECTION:

In making valve ratio selection,
 note Valves 1 and 2 are effected
 by inlet pressure (P).
 Valves 3 and 4 may see full
 pressure on the side port and
 only Tank return line pressure
 on the bottom port.
 Valves 3 and 4 may be lower ratio.

Note the 2" Ctr. to Ctr. distance.
 This is allowance for Actuator
 (A) diameters of the valve pilots.

See Spec. Sheets 2PB N/C
 and 2PB N/O for Valve Ordering
 information. Valves must be double
 blocking (bi-directional).

The SM408*** Housings Require
 Valves to fit C-8502 (8-2) Cavities.
 Reference Cavity Drawing 1200630