

222-S SERIES CARTRIDGE PUMPS

6343 RIVER ROAD SE ■ CLEAR LAKE, MN 55319 USA
 Telephone: 320-743-2276 ■ Fax: 320-743-3723
 mailbox@doering.com ■ www.doering.com



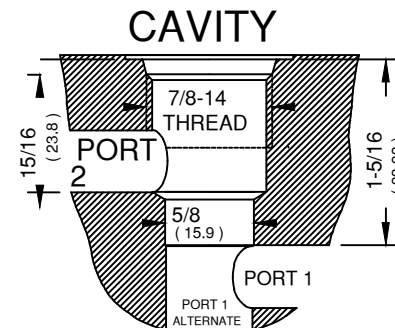
DOERING

FEATURES

Wetted parts are SST.
 Beam and Collar are Electroless Nickel plated Carbon Steel.
 For all SST, order -SS
 Guided, Sprung Checks.
 Bubble Tested outlet.
 Rated to 10,000 PSI back pressure at port 1.

PUMP MOUNTING & AIR PURGE NOTES:

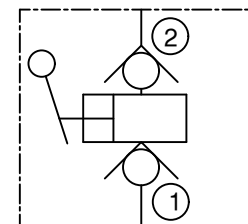
Pump may be mounted in any position.
 When mounted with No. 1 port facing up, pump will self purge. When mounted with No. 1 port facing down, pump may be purged by loosening purge port plug located on side of pump body (cylinder) and operating piston.



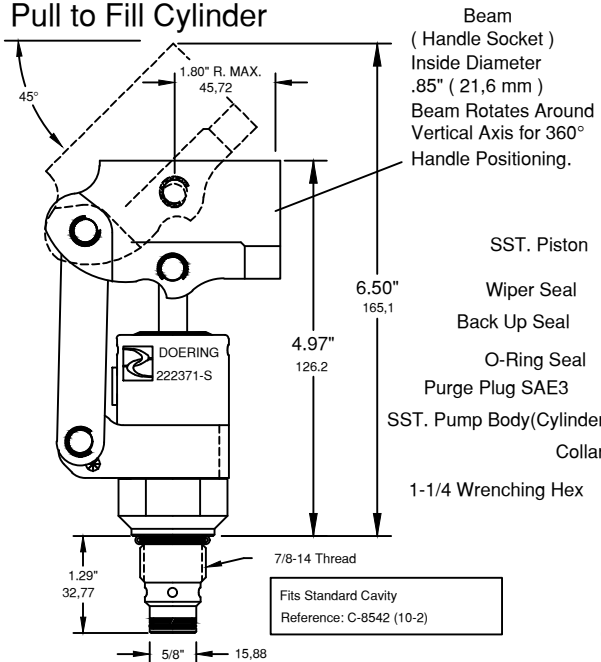
Cavity Spec. Sheet 1200621
 Cavity C-8542 (10-2 Industry)
 Reference Form Tool: FT-8542

222-S SERIES

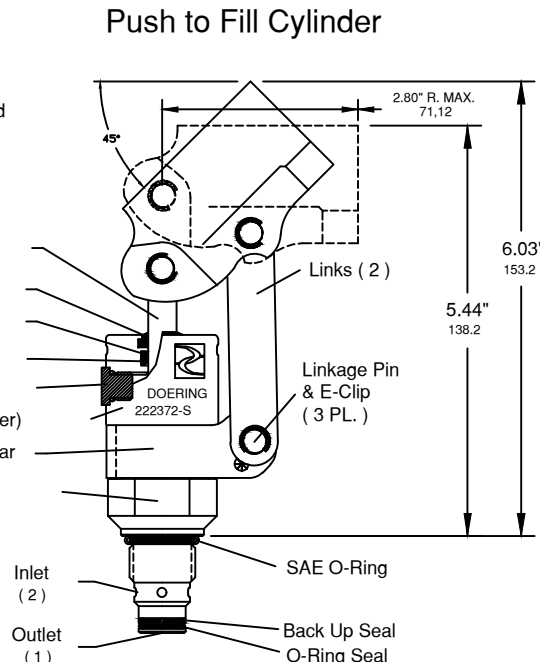
Functional Symbol:



**Push Style Linkage:
 Push to Pressurize
 Pull to Fill Cylinder**

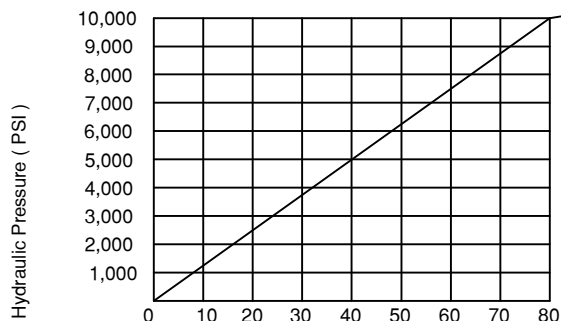


**Pull Style Linkage:
 Pull to Pressurize
 Push to Fill Cylinder**



PUMP PERFORMANCE GRAPH

Maximum Safe Pressure 10,000 PSI, Port 1 only.



Do not exceed handle force of 80 Pounds.

DISPLACEMENT, FULL STROKE,		PUSH STYLE LINKAGE ORDER NO.	PULL STYLE LINKAGE ORDER NO.
Cubic Inches	Cubic Centimeters		
0.1	1,6cc	222371-S	222372-S
HOUSING BODY NO. S8542W-## See Spec. Sheet 1201455 for order details.			
ACCESSORIES: Zinc Plated Handle, 16" (406.4 mm), Order No. 241016 SST. Handle, 16" (406.4 mm), Order No. 241016-S See Handle Spec. Sheet 1201459 for more information.			
OPTIONS: Seal Materials: Call for quotation.			
INSTALLATION: Lubricate seals. Use 1-1/4" Wrench. Torque to approximately 50 Foot Pounds.			