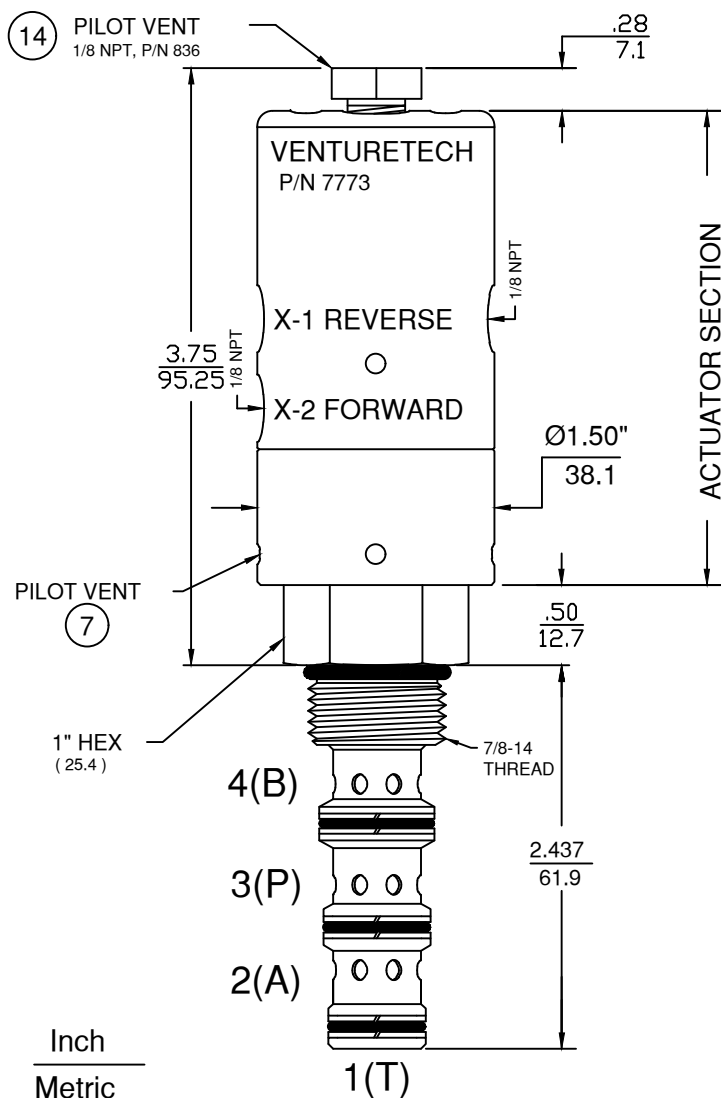


6343 RIVER ROAD SE ■ CLEAR LAKE, MN 55319 USA
 Telephone: 320-743-2276 ■ Fax: 320-743-3723
 mailbox@doering.com ■ www.doering.com



DOERING

CARTRIDGE VALVE



Inch
Metric

SPECIFICATIONS:

Dual Air Pilot Operated Hydraulic Spool Valve.
 Four Way, Directional Control or Selector Valve.
 Maximum System Pressure:
 Ports 2 (A), 3 (P) and 4 (B) rated to 3,000 PSI.
 Port 1 (T) rated to 1,500 PSI.
 Pilot Pressure Range: 80 PSI Min. to 150 PSI Max.
 Pilot to Port 1 (T) Ratio is 68:1
 Ports 2, 3 and 4 are pressure balanced.
 Fluid temperature -40°F (-40°C) to 200°F (93.3°C)
 Install Cartridge valve using 1" wrench
 Valve should screw in freely to the Mount Seal.
 Final tightening to 20 foot pounds torque.
 Use lubricant on external oil seals and mounting threads.
 Actuator Section may be rotated to any position after installation.

Cavity Informaton:

Doering C-8544 (10-4)
 Data Sheet 1200671

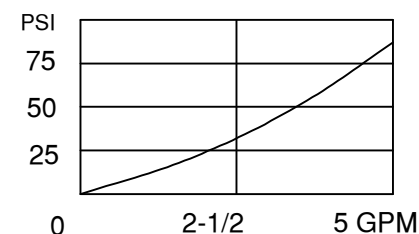
Housing & Line Mount options:

See Data Sheets: 1200675,
 1201385, 1202930 or 1202984.

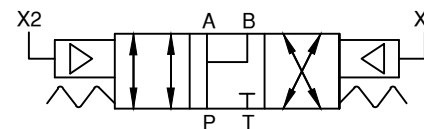
Materials:

Buna-N O-Rings with Teflon back ups.
 Stainless Steel Retaining Rings
 Stainless Steel Wetted Parts
 Actuator components are Aluminum & SST.

Pressure Drop Chart



Functional Symbol



4PS SERIES

Three Position 4 Way Spool Valve.
 Dual Pilot Operated, Spring Centered.
 Directional Control or Selector Valve.

Order Venturetech P/N 7773