

Doering Cartridge Check Valve

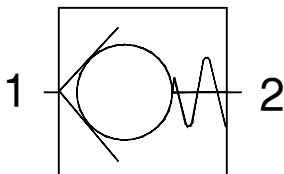
Order Information:

Crack PSI Tolerance $\pm 10\%$

Order No.	Crack (PSI), Factory Set
DCV-10-25	25 PSI
DCV-10-**	Specify Crack PSI within Range of 3 to 25 PSI

Housing Order Information:

Aluminum	Stainless	Port P(1)
2692-1	2692-1S	1/8 NPT
2692-2	2692-2S	1/4 NPT
2692-3	2692-3S	3/8 NPT
2692-4	2692-4S	SAE4 (-4)
2692-6	2692-6S	SAE6 (-6)



Functional Symbol

Check Valve and Housing Assembly

Spec. Sheet No. 1202692 REV. 00