

Description:

A Screw-in, cartridge style, direct acting relief valve.

Fits Doering C-8542 (10-2) Valve Cavity.

Flow direction 1 to 2

Adjustment Range 2,000 to 3,000 PSI

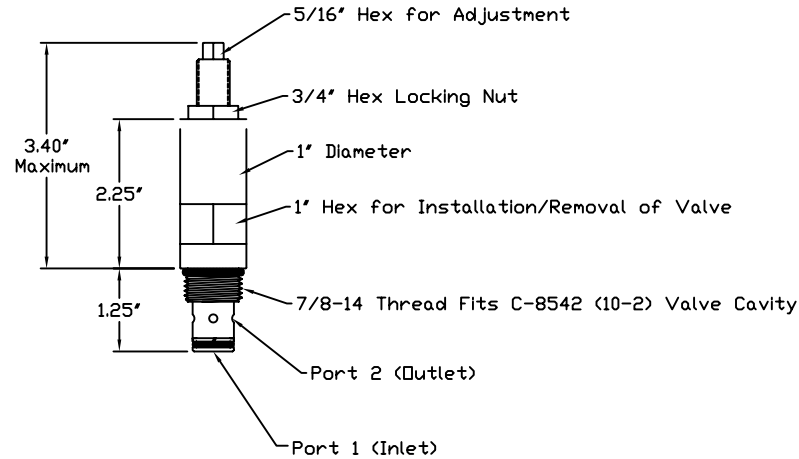
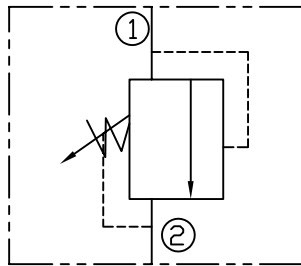
External Materials: Stainless Steel

Seals: Buna-N

Back UP Rings: Teflon

Method of adjustment: Loosen Locking Nut and Turn Adjusting Screw in to increase Crack Pressure.

Adjusting Screw has 5/16" External Hex.



Order: P/N 1202733 Doering Relief Valve,

Valve will be factory pre set to relieve at 2,500 PSI Crack Pressure

1202733 Rev. 00
Relief Valve

6343 RIVER ROAD SE ■ CLEAR LAKE, MN 55319 USA
Telephone: 320-743-2276 ■ Fax: 320-743-3723
mailto:mailbox@doering.com ■ www.doering.com

