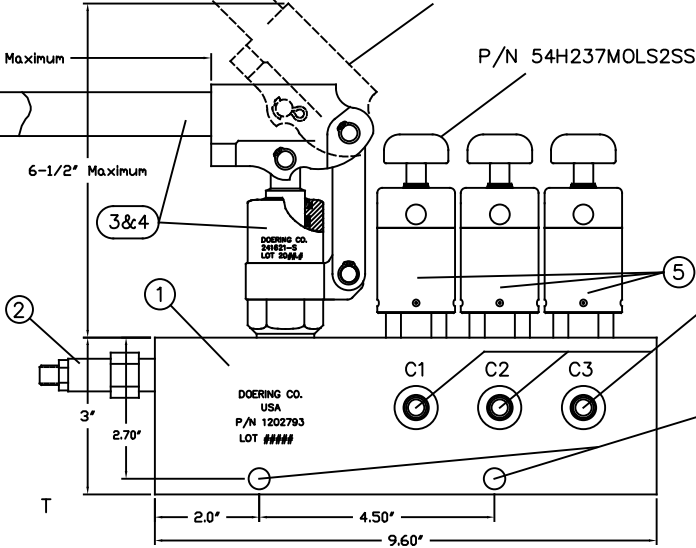
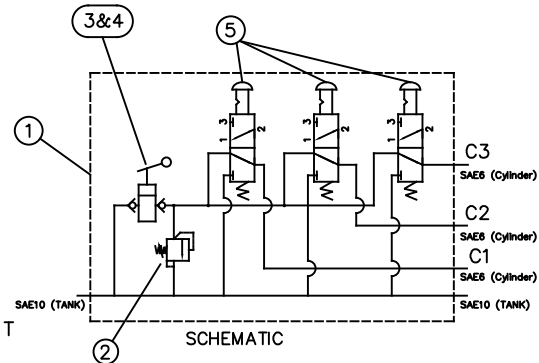
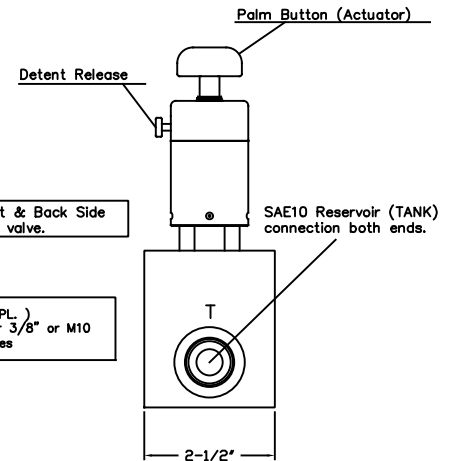


241016-S Handle, 16" Stainless Steel with Rubber Grip

241621-S Doering Pump, Stainless Steel

P/N 54H237MOLS2SS



SAE6 Front & Back Side from each valve.

Ø13/32 (2 PL.)
 Clearance for 3/8" or M10
 Mounting Holes

Operation:
 Pump is used to provide hydraulic pressure through outlets C1, C2 and C3. When valves are in the latched detent position (Actuator Button Down), C1, C2 and C3 drain to tank. When valve is released from the detent position (Actuator Button Up), pump pressure/flow connects to C1, C2 or C3. SUN Relief valve to be set to desired pressure to protect components.

1202794 Rev. 01
 Three Station Assembly

Key	Description & Part Number
Key 1	Doering Manifold, P/N 1202793, Aluminum Material, Rated 3,000 PSI
Key 2	SUN Relief Valve, Direct Acting, P/N RDBA-LAN
Key 3	241621-S Doering Pump, Stainless, .307 Cubic Inch Displacement
Key 4	241016-S Doering Handle, 16" Stainless Steel with Rubber Grip
Key 5	(3 Used) P/N 54H237MOLS2SS Doering Spool Valve, Latching Detent

Complete Assembly Order Doering P/N 1202794 Rev. 00