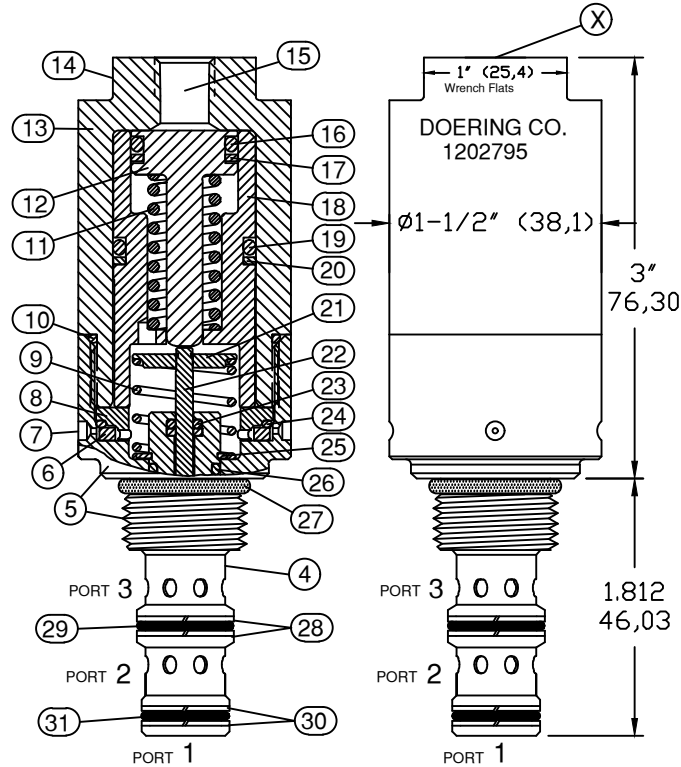


## KEY EXPLANATION:

1. Bottom: System Port (1)
2. Second from bottom: System Port (2)
3. Third from bottom: System Port (3)
4. Spool Cage (Heat Treated Stainless)
5. Cartridge Body, Lower, SST., 7/8"-14 Thread
6. Filter, 10 Micron Sintered Stainless Steel.
7. Vents to atmosphere ( 2 Places 180° apart )
8. Filter Retainer, Stainless Steel
9. Spool return Spring, See Specifications:
10. O-Ring Seal, Buna N
11. Piston return Spring, See Specifications:
12. Piston, Stainless Steel
13. Cartridge Body, Upper, Stainless Steel
14. 1" Wrench Flats
15. Pilot Port, SAE4 O-Ring Port.
16. O-Ring Seal, Buna N
17. Back Up Ring, Teflon
18. Cylinder Sleeve, Stainless Steel
19. O-Ring Seal, Buna N
20. Back Up Ring, Teflon
21. Spring Retainer Assembly, Carbon and Stainless.
22. Spool Connector Linkage ( Stainless Steel )
23. O-Ring Seal, Teflon
24. O-Ring Seal, ( Buna-N )
25. Retaining Ring, Stainless Steel.
26. O-Ring Seal, Teflon
27. O-Ring Seal, Buna-N
28. Back Up Rings, Teflon ( two used )
29. O-Ring Seal, Buna-N
30. Back Up Rings, Teflon ( two used )
31. O-Ring Seal, Buna-N

## CARTRIDGE VALVE



## CAVITY & HOUSING

Cavity & Tooling C-8543 (10-3):  
See Spec. Sheet 1200634

Line Mount Housings:  
See Spec. Sheet 1200673 & 1201903

Panel Mount Housings & Spacers:  
See Spec. Sheets  
1202983 and 1202990

Housing, Cavity & Tooling Info  
found at [www.doering.com](http://www.doering.com)  
under Housings and Technical.

## SPECIFICATIONS

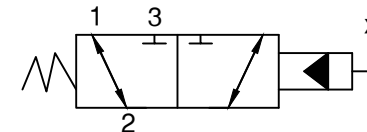
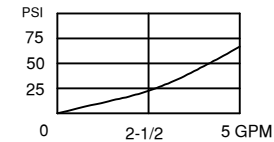
Hydraulic or Gas Pilot Operated Spool Valve.  
Three Way, Directional Control or Selector Valve.  
Pilot (X) Hydraulic or Gas mediums.

Pilot Pressure Range 20 to 5000 PSI. Tolerance on Pilot Pressures +/- 5 PSI.  
Valve shifts from Closed to Open when Pilot Pressure ramps up to 45 PSI.  
Valve shifts from Open to Closed when Pilot Pressure ramps down to 25 PSI  
See additional explanation under Special Spring Configuration ----.

See additional notes under 39:1 Pilot Ratio:  
require lubricated fluid. I.E.: Standard Hydraulic Oil.  
Ports 1, 2, and 3 rated to 3,000 PSI.

Fluid temperatures -40°F (-40°C) to 200°F (93.3°C)  
Install Cartridge valve using 1" wrench  
Valve should screw in freely to the Mount Seal.  
Final tightening 20 to 30 foot pounds torque.  
Use lubricant on external oil seals and mounting threads.

## PRESSURE DROP / FLOW



## 3PS SERIES

3 Way Spool Valve, Pilot Operated.  
Directional Control or Selector Valve.

## 39:1 PILOT RATIO:

Pilot Ratio applies to the #1 Port only.  
The #2 and 3 ports are balanced.  
See more notes below under Special Spring Configuration and also under Specifications.

Special Spring Configuration designed to dump Cylinder to Tank and block Pressure Inlet, when Pilot Pressure (X) drops below 30 PSI.  
Full Shift to Closed before pilot drops to 20 PSI.

See SPECIFICATIONS in right column for more information.

### Normally Closed Connections:

- 1 Connected to Tank
- 2 Connected to Cylinder (function)
- 3 Connected to Pressure Inlet

Cartridge Valve Order No. 1202795

Order Housing separately.

6343 RIVER ROAD SE ■ CLEAR LAKE, MN 55319 USA  
Telephone: 320-743-2276 ■ Fax: 320-743-3723  
mailto:mailbox@doering.com ■ www.doering.com



DOERING