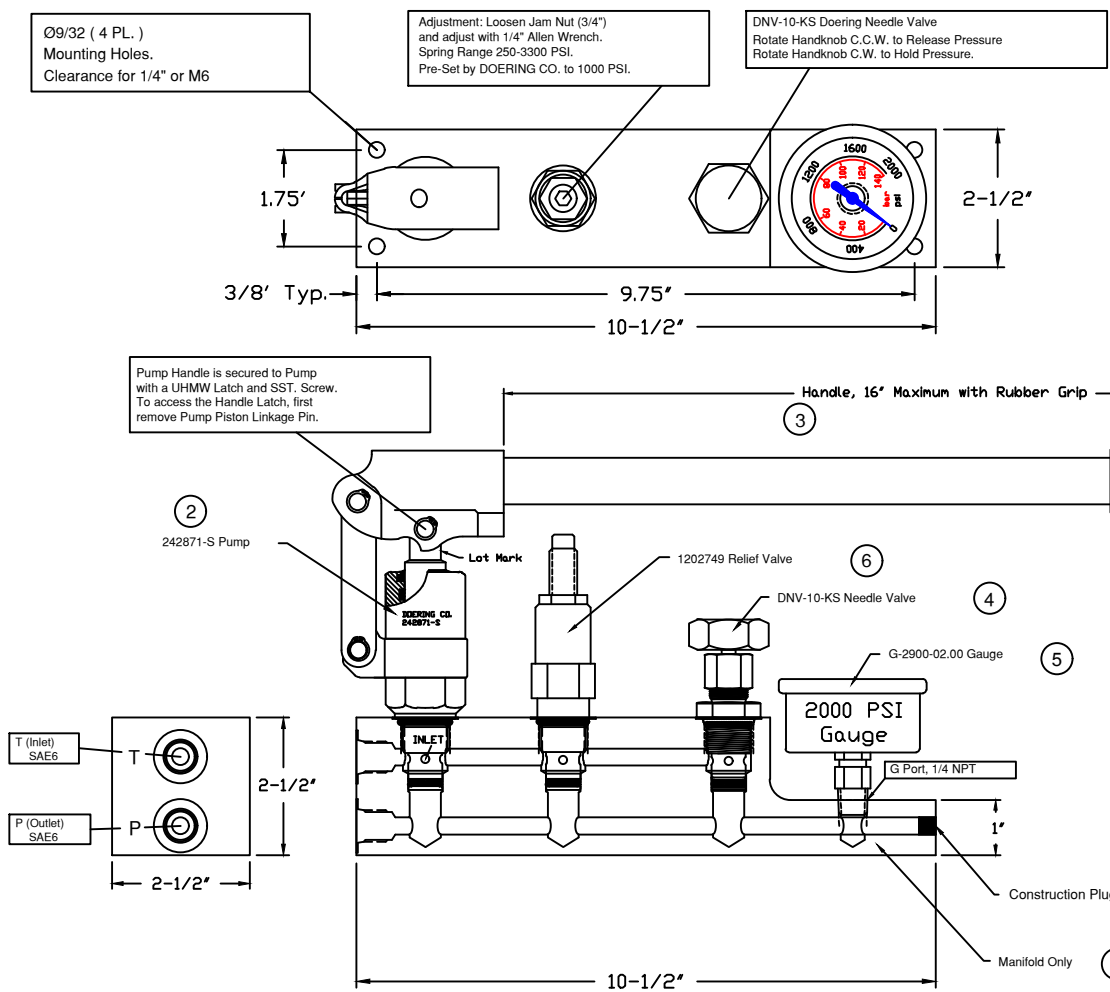


6343 RIVER ROAD SE CLEAR LAKE, MN 55319 USA
 Telephone: 320-743-2276 Fax: 320-743-3723
 mailbox@doering.com www.doering.com

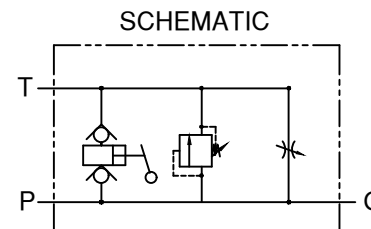


For Complete Assembly, Please order Doering P/N 1202888

Components List / Bill of Material

Key Doering P/N Manufacturer Description

Key Doering P/N	Manufacturer	Description
1	1202887	Doering Co. Manifold, Aluminum, 3500 PSI Rated
2	242871-S	Doering Co. Pump, Hand Operated, 1000 PSI/ 50# Handle Force
3	1202899	Doering Co. Handle, SST., Rubber Grip and UHMW Latch
4	DNV-10-KS	Doering Co. Needle Valve, SST.
5	G2900-02.00	D.F.C. Gauge, SST. Case, 0-2000 PSI
6	1202749	HYF Relief Valve (RV-20A-0-N-33) Spring Range 250 to 3300 PSI



1202888 DOERING
 Pump Station Assembly



DOERING