

DESCRIPTION

A 2-Way, normally closed valve.
Pilot Valve with Air to Open.
spring-return, screw-in, directional
cartridge valve, poppet design.

INSTALLATION

Install Cartridge valve using 1" wrench on
the 1" Hex at the base of the valve.
Valve should screw in freely to the Mount Seal.
Final tightening 20 to 30 foot pounds torque.
Use lubricant on external oil seals and mounting
threads.

CAVITY INFORMATION

Cavity C-8502 (Industry 8-2)
Reference Cavity Spec. Sheet No. 1200630 for
Cavity Drawing C-8502 at www.doering.com
Form Tool: FT-8502 Call for source information.

SINGLE STATION HOUSING INFORMATION:

Single Station Housings (Sub-Plates) illustrated
Reference Housing Spec. Sheet No. 1200672 for
Housing Drawing S8502 at www.doering.com.
Choose from Aluminum or Stainless materials.
Multi Station and Custom Housings or Manifolds
also available.

FEATURES

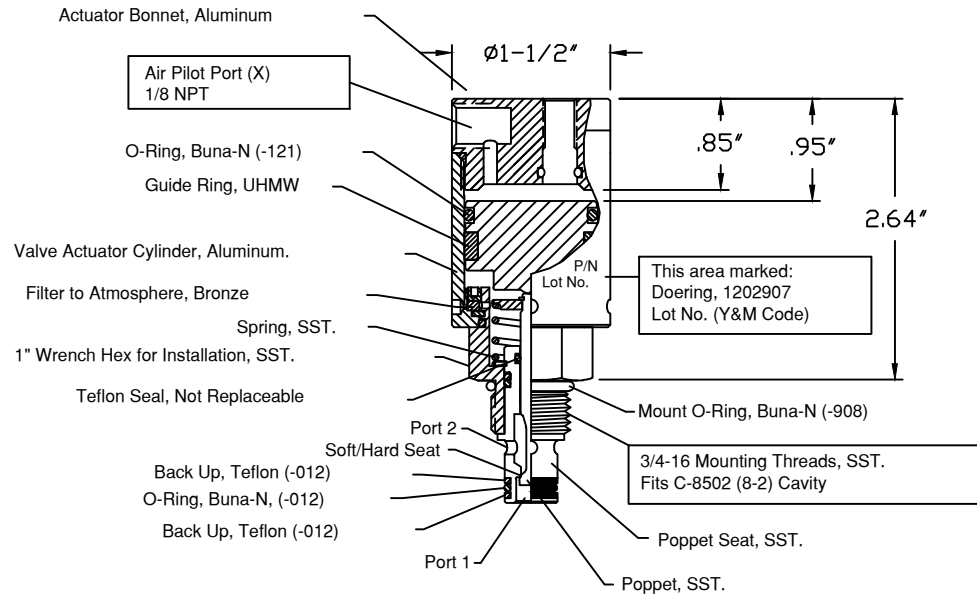
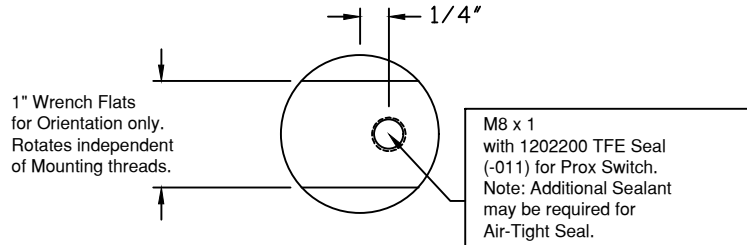
Valve bonnet has M8 x 1 thread for Prox. Switch.
Soft/Hard (Soft & Hard) Seat, Bubble Tested.
Wetted (holding) area is SST.
1" Wrench flats at top of valve are used to orientate
actuator body or hold body for Prox. Switch installation.
The 1" Hex at the base of the valve is for installation.

PILOT RATIO NOTES:

Valve 1202907 has a 40:1 Pilot to System
Ratio. The area of the pilot piston is
40 times greater than the area of the
poppet at port No. 1.
To determine pilot PSI required, divide
the maximum system pressure by 40 and
add 15 PSI for spring and hysteresis.
For most applications, use 50 to 150 PSI Pilot Pressure.

RATINGS

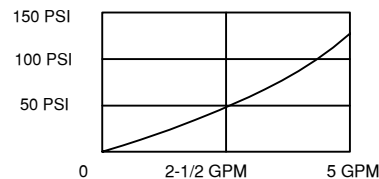
- Pilot (X) Pressure 50 to 150 PSI Air
- Ports 1 & 2: Vacuum to 3,000 PSI, Gas or Hydraulic
Valve is Bi-Directional and either Port may be used,
however when possible, use No. 1 Port for primary holding.
- Temperature: -40° to 120°C



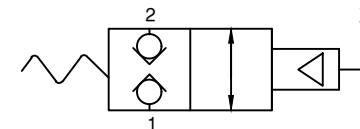
Order Information:

1202907 Doering Cartridge Valve

FLOW AND PRESSURE DROP CHART. $C_V = 0.4$



2PB N/C SERIES



Valve is Bi-Directional and either Port may be used,
however when possible, use No. 1 Port for primary holding.

6343 RIVER ROAD SE ■ CLEAR LAKE, MN 55319 USA
Telephone: 320-743-2276 ■ Fax: 320-743-3723
mailbox@doering.com ■ www.doering.com



DOERING