

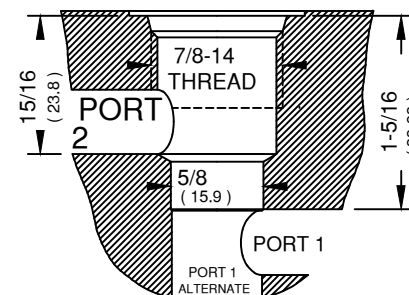
6343 RIVER ROAD SE ■ CLEAR LAKE, MN 55319 USA
 Telephone: 320-743-2276 ■ Fax: 320-743-3723
 mailbox@doering.com ■ www.doering.com

FEATURES

All parts are Stainless Steel except Beam (Handle Socket) is Electroless Nickel plated Steel.

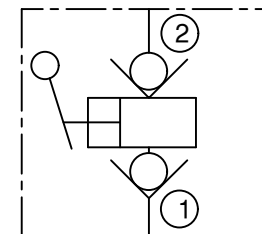
Operates in any positing.
 Rated to 5000 PSI back pressure at port 1.
 Ability to generate PSIG determined by piston size.
 See PERFORMANCE GRAPH.

CAVITY



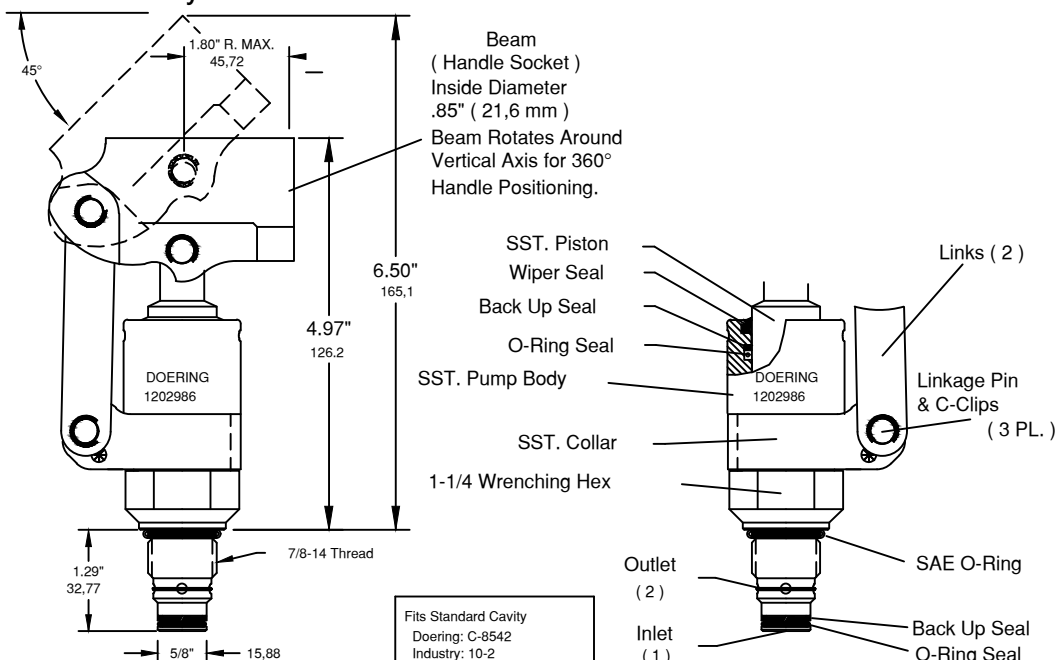
REQUEST CAVITY DRAWING: C-8542
 REFERENCE FORM TOOL: FT-8542

241-S SERIES



DOERING

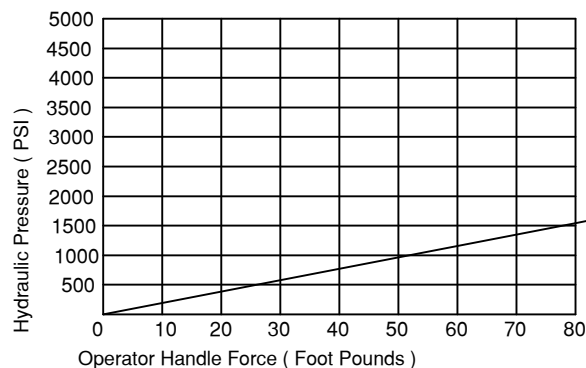
Push to Pressurize
 Pull to Fill Cylinder



Fits Standard Cavity
 Doering: C-8542
 Industry: 10-2

PUMP PERFORMANCE GRAPH

Maximum Safe Operating Pressure 5000 PSI
 Maximum Safe Handle Force 150 Foot Pounds



Assembled and Tested using only:
 MIDEL 7131 Lubricant
 Ref. Doering P/N 1203006

DISPLACEMENT,
 FULL STROKE,
 Cubic Inches Cubic Centimeters

.601 9,8cc

Order Pump Number:

1202986

ACCESSORIES:

SST. Handle, 16" (406,4 mm), Order No. 241016-S