

KEY EXPLANATION:

1. Port No. 1 (System)
2. Port No. 2 (System)
3. Poppet, Hard Stainless Steel
4. Seat passage sealing area.
5. O-Ring Seal, Buna N (Also See Options)
6. Filter, 10 Micron, Sintered Bronze.
7. Vent (2 Pl.) Optional T Port Locations
8. Filter Retainer
9. Poppet and Actuator Return Spring, Stainless
10. Piston Guide Ring UHMW material
11. Piston O-Ring Seal, Buna N (Also See Options)
12. Bonnet O-Ring Seal, Buna N (Also See Options)
13. 3/16" (4.763) Spanner Holes (2 Pl.)
14. 1/8 NPT Pilot Port X (Also See Options)
15. Bonnet, Aluminum material
16. Actuator Body, Aluminum
17. Actuator Piston, Aluminum
18. Poppet Return Spring Retainer Assembly
19. Poppet Seal, TFE
20. 1/8" (3.175) Spanner Holes (4 or 6 Pl.)
21. Cartridge Seat Retaining Ring
22. Mount O-Ring Seal, Buna N (Also See Options)
23. Cartridge Mounting Threads, Stainless Steel
24. Cartridge Seat, Hard Stainless
25. Back Up Rings, Teflon
26. O-Ring Seal, Buna N (Also See Options)

SPECIFICATIONS:

Pilot operated two way cartridge valve. Normally closed. Pilot to open passage between ports one and two.

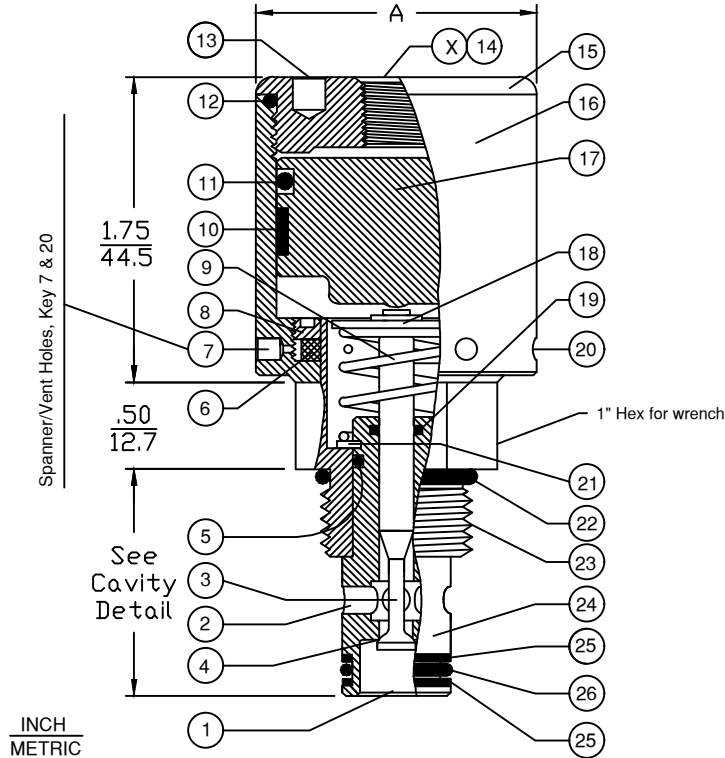
No. 1 port is the preferred pressure holding port.
 Maximum pressure 5,000 PSI, Cavity C-8502
 Cavity C-8542, 5,000 PSI Port 1, 3,000 PSI Port 2
 Pilot Pressure Range, 50 PSI Min. to 150 PSI Max.
 Fluid temperature -45°F, (42.7°C) to 200°F, (93.3°C)
 Install Cartridge Valve using 1" wrench.
 Valve should screw in freely to the Mount Seal.
 Torque to 20 foot pounds.
 Use lubricant on external oil seals and mounting threads.

PILOT RATIO NOTES:

TO CALCULATE THE CORRECT PILOT RATIO VALVE, FOLLOW THESE STEPS:

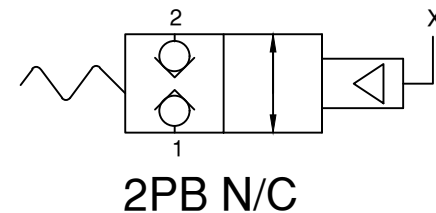
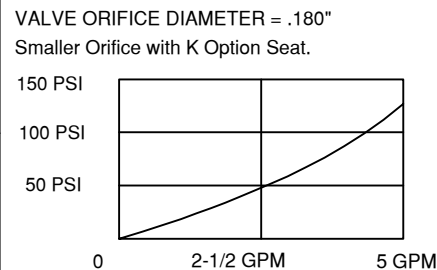
1. Determine the MAXIMUM possible system pressure.
 Multiply X 1.1 = SYSTEM
2. Determine MINIMUM possible pilot pressure.
 Multiply X .9 = PILOT
3. Divide SYSTEM by PILOT = PILOT TO SYSTEM RATIO
4. Round up to standard available ratio.

CARTRIDGE VALVE



INCH
METRIC

SYSTEM RATIO	"A" Diameter		Order Valve No.	Fits Cavity:	PRESSURE DROP CHART Hard Seat Only. $C_V = 0.4$	2PB SERIES
	Inch	Metric				
49:1	1-5/8	41.3	1203032		VALVE ORIFICE DIAMETER = .180" Smaller Orifice with K Option Seat. 	



6343 RIVER ROAD SE ■ CLEAR LAKE, MN 55319 USA
 Telephone: 320-743-2276 ■ Fax: 320-743-3723
 mailbox@doering.com ■ www.doering.com



DOERING