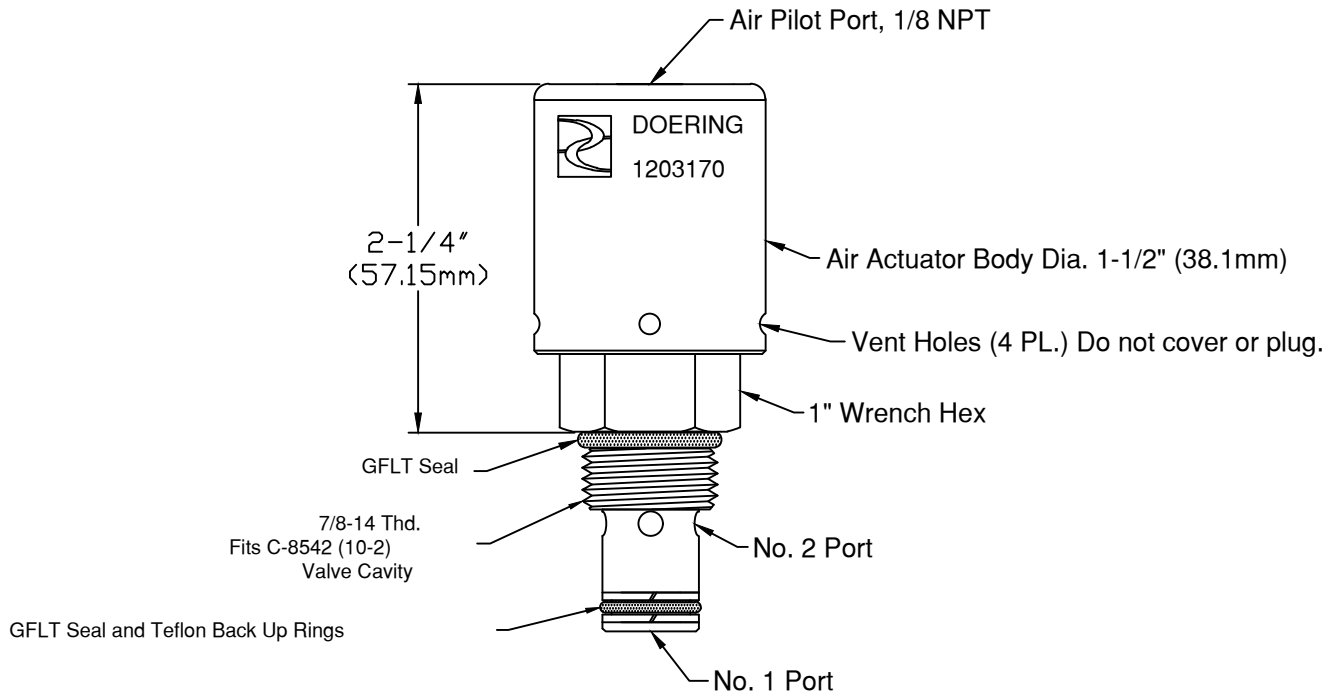
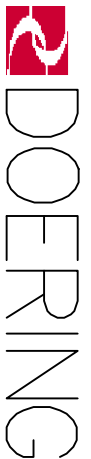


6343 RIVER ROAD SE ■ CLEAR LAKE, MN 55319 USA
 Telephone: 320-743-2276 ■ Fax: 320-743-3723
 mailbox@doering.com ■ www.doering.com



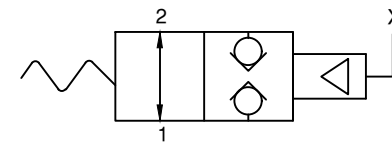
Doering Cartridge Valve 1203170:

1203170 Doering Cartridge Valve, N/O, Air Pilot to Close

Features: GFLT and Teflon Seals in Wetted Area

Spec. Sheet 1203170 is available at www.doering.com

Enter Spec. Sheet No. in document search window.



Functional Symbol