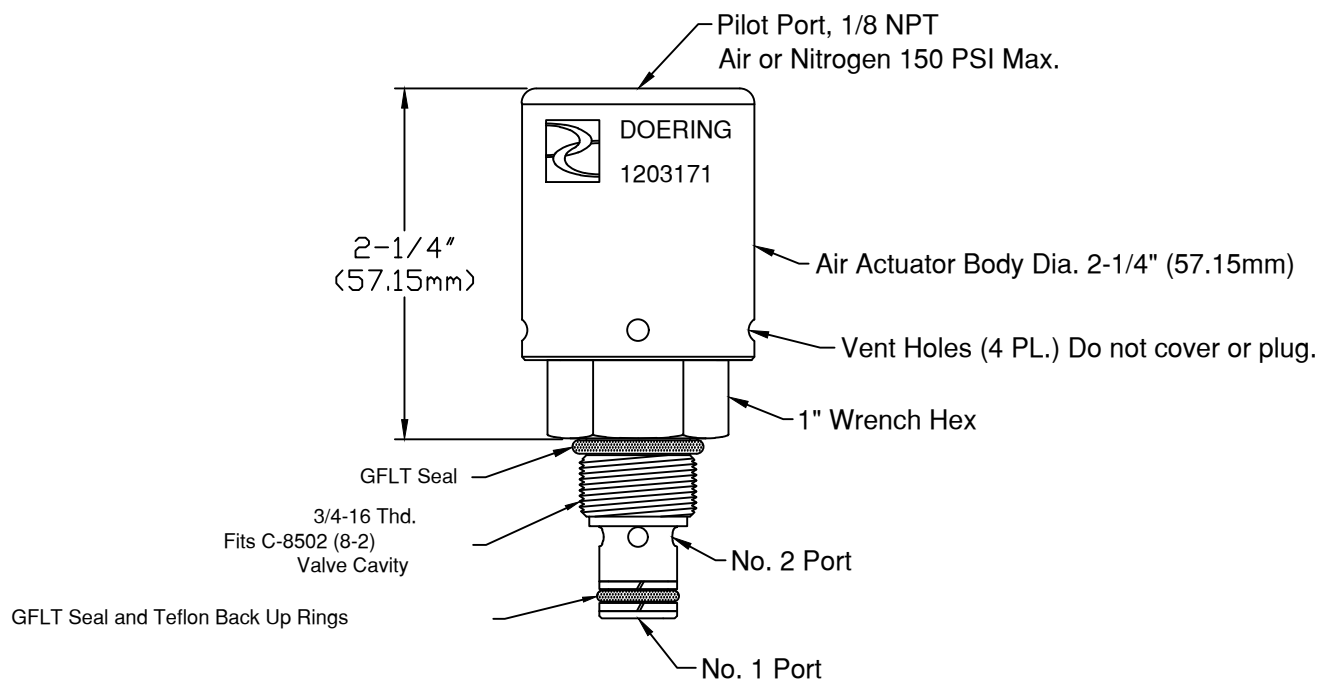


6343 RIVER ROAD SE ■ CLEAR LAKE, MN 55319 USA
 Telephone: 320-743-2276 ■ Fax: 320-743-3723
 mailbox@doering.com ■ www.doering.com



DOERING

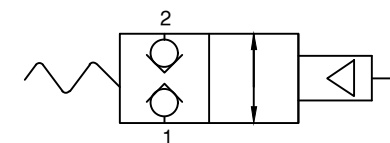


Doering Cartridge Valve 1203171:

1203171 Doering Cartridge Valve, N/C, Air Pilot to Open.
 Features: Kel-F Soft Seat, GFLT and Teflon Seals in Wetted Area

Spec. Sheet 1203171 is available at www.doering.com

Enter Spec. Sheet No. in document search window.



Functional Symbol