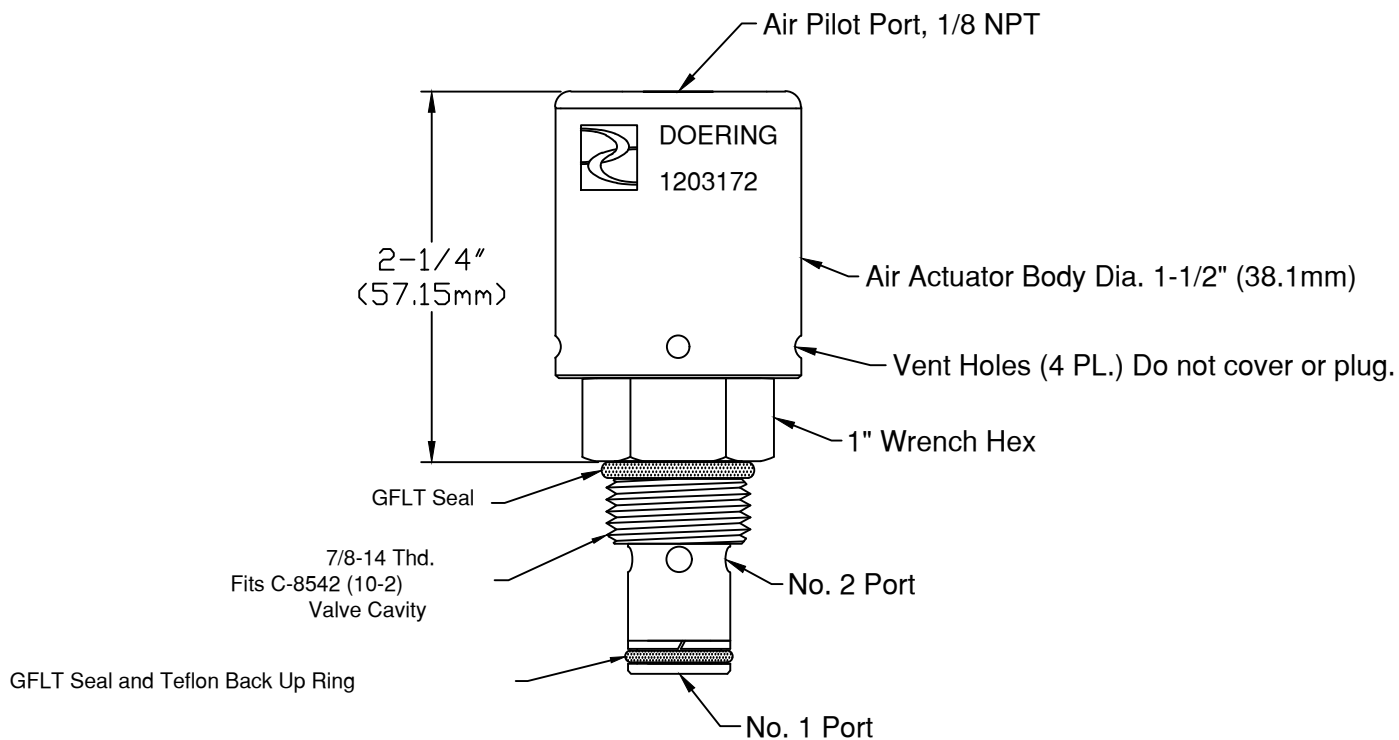


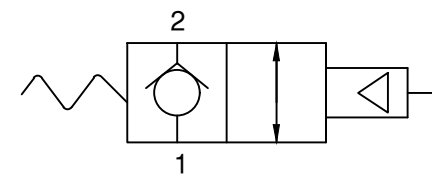
6343 RIVER ROAD SE ■ CLEAR LAKE, MN 55319 USA  
 Telephone: 320-743-2276 ■ Fax: 320-743-3723  
 mailbox@doering.com ■ www.doering.com



**Doering Cartridge Valve 1203172:**

1203172 Doering Cartridge Valve, N/C, Air Pilot to Open.  
 Features: GFLT and Teflon Seals in Wetted Area

Spec. Sheet 1203172 is available at [www.doering.com](http://www.doering.com)  
 Enter Spec. Sheet No. in document search window.



**Functional Symbol**



**DOERING**