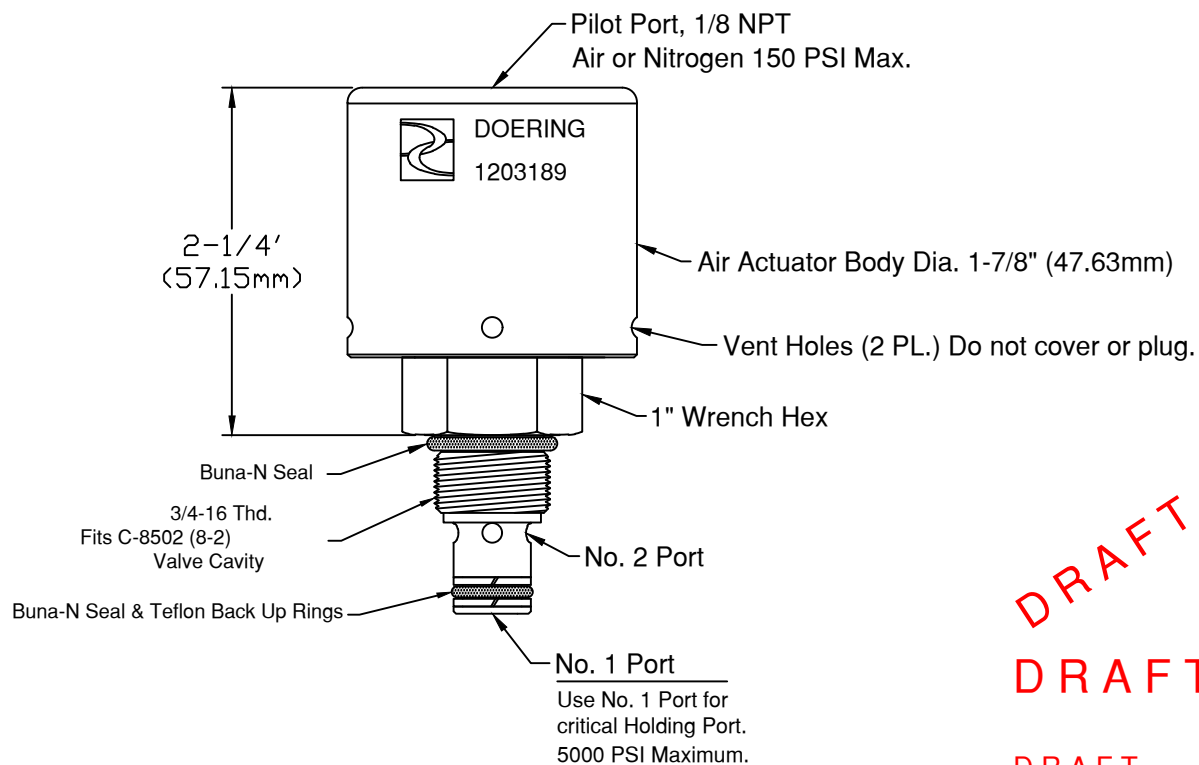


6343 RIVER ROAD SE ■ CLEAR LAKE, MN 55319 USA
 Telephone: 320-743-2276 ■ Fax: 320-743-3723
 mailbox@doering.com ■ www.doering.com



DRAFT
DRAFT

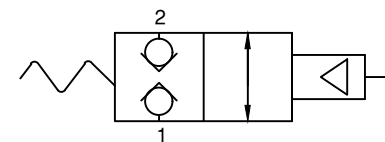
DRAFT
CF: 10-550
Russ 4/5/10

Doering Cartridge Valve 1203189:

1203189 Doering Cartridge Valve, N/C, 69:1 Air Pilot to Open
 Features: Kel-F soft seat, Low Temp Buna Piston Seal

Spec. Sheets are available at www.doering.com

Enter Spec. Sheet No. in document search window.



Functional Symbol

 DOERING