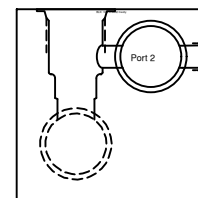
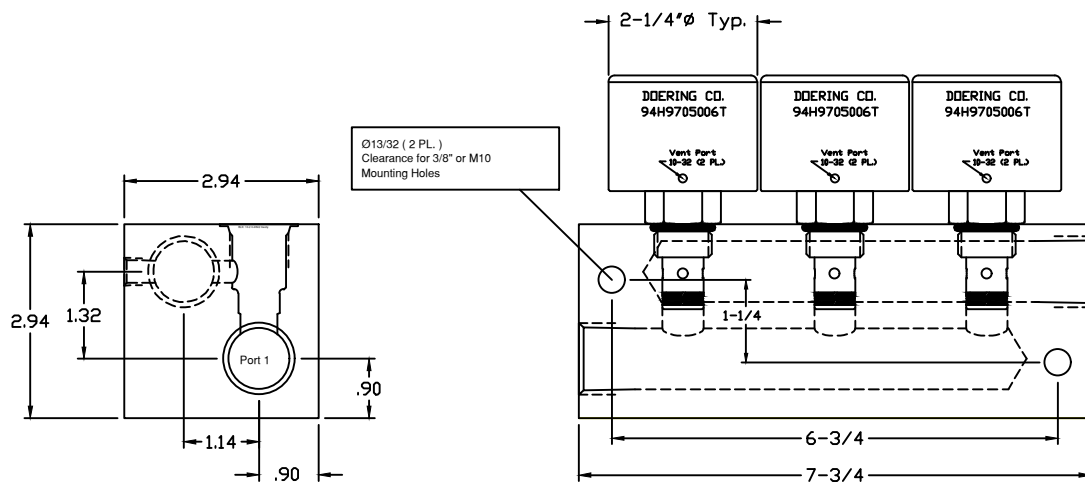


6343 RIVER ROAD SE ■ CLEAR LAKE, MN 55319 USA
Telephone: 320-743-2276 ■ Fax: 320-743-3723
mailto:mailbox@doering.com ■ www.doering.com

DRAFT
DRAFT

DRAFT
CF: 10-1071
Russ 8/1/10



Material: Aluminum, 6061T6
No. 1 & 2 Ports are 3/4" NPT

1203198 DRAFT
Housing, Aluminum

 DOERING