

## KEY EXPLANATION:

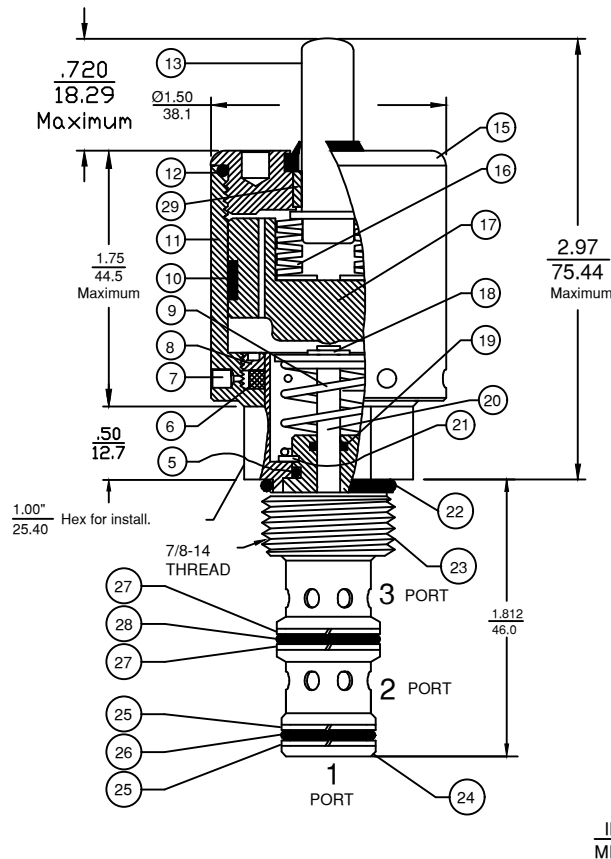
1. Bottom: System Port (1)
2. Second from bottom: System Port (2)
3. Third from bottom: System Port (3)
5. Cartridge Seat Seal (Teflon)
6. Filter, 10 Micron Sintered 316 Stainless
7. Vents to atmosphere (2 Places 180° apart)
8. Filter Retainer, 316 Stainless
9. Spool return Spring, 302 Stainless
10. Piston Wear Ring, Teflon
11. Actuator Guide Cylinder, 316/316L Stainless
12. Bonnet O-Ring, Buna-N
13. Operator Rod, 316/316L Stainless
15. Upper Actuator Bonnet, 316/316L Stainless
16. Overtravel Protection Approximate 0.12" (3mm)  
Some free travel (slack) is normal.
17. Operator Follower Assembly, 316/316L Stainless
18. Spring Retainer Assembly, Stainless
19. O-Ring Seal, Turcon M12 with Buna N energizer
20. Spool Connector Linkage, 17-4PH900 SST.
21. Retaining Ring, Stainless Steel
22. O-Ring Seal, Buna-N
23. Cartridge Mounting Threads (7/8-14)
24. Spool Cage, 17-4PH900 Stainless
25. Back Up Rings, Teflon (two used)
26. O-Ring Seal, Buna-N
27. Back Up Rings, Teflon (two used)
28. O-Ring Seal, Buna-N
29. Bronze Bushing

## SHIFT FORCE NOTES:

10 to 15 Pounds of Force is required to shift the valve spool with zero pressure on port no. 1.

Any pressure on Port No. 1 will increase Force Requirement by .012 X Port No. 1 PSI.

## CARTRIDGE VALVE



## Cavity & Housing

Cavity C-8543 (10-3):  
See Spec. Sheet 1200634

Line Mount Housings:  
See Spec. Sheets  
1200673 and 1201903

Panel Mount Housings:  
See Spec. Sheets  
1202983 and 1203290

## OPTIONS

Available with or without Overtravel Protection.  
Optional seals include Viton, Teflon and others.

Key 7 vents to atmosphere (2 Places).  
T Option provides 10-32 Threaded ports at these locations.

## OPERATION

Manually Operated Hydraulic Spool Valve.  
Three Way, Directional Control or Selector Valve.

Maximum System Pressure: Ports  
1, 2, and 3 ) is 3,000 PSIG. See "SHIFT FORCE NOTES"

Spool Stroke is .25" (6.35mm)

Free and Over Travel dimensions are approximate.

Fluid temperatures -40°F (-40°C) to 200°F (93.3°C)

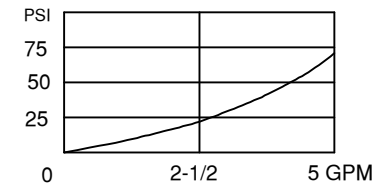
Install Cartridge valve using 1" wrench

Valve should screw in freely to the Mount Seal.

Final tightening 20 to 30 foot pounds torque.

Use lubricant on external oil seals and mounting threads.

## PRESSURE DROP CHART

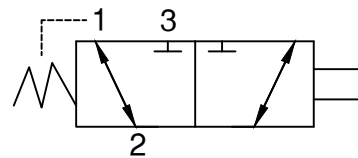


Doering Cartridge Spool Valve.

3 Way Directional Control,

Order No. 1203364

Order No. 1203365, for Assembly including 1203364 Valve and S8543-G6S316 Housing



6343 RIVER ROAD SE ■ CLEAR LAKE, MN 55319 USA  
Telephone: 320-743-2276 ■ Fax: 320-743-3723  
mailto:doering@doering.com ■ www.doering.com



DOERING