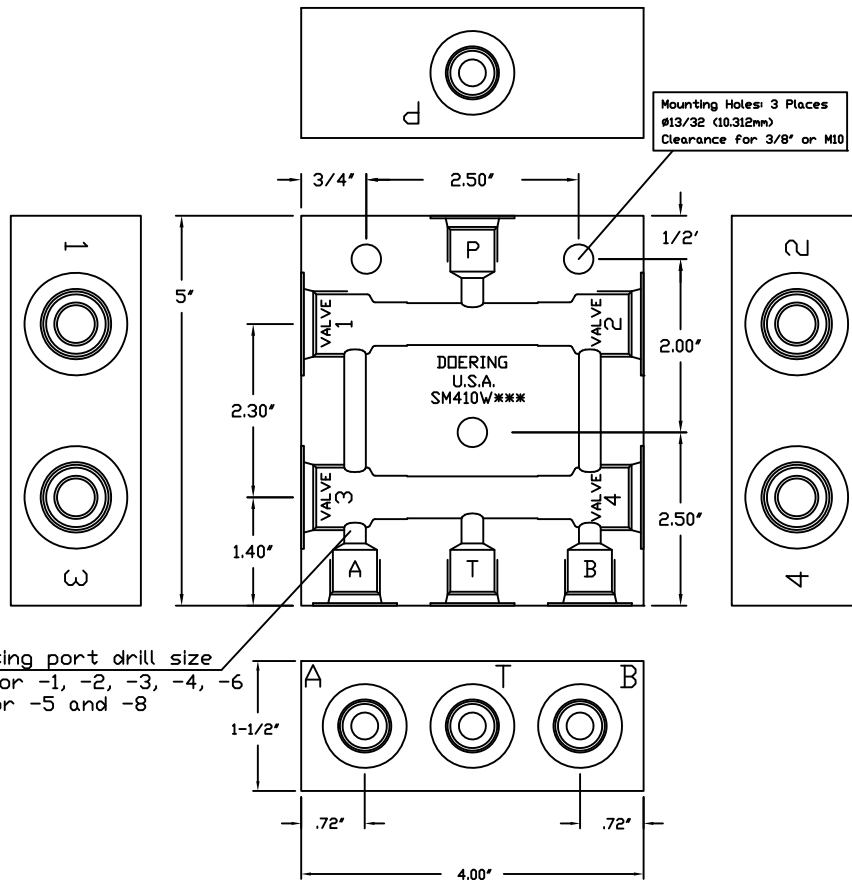
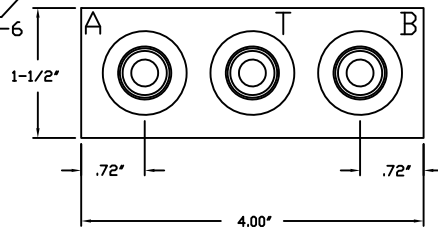


4 WAY POPPET FUNCTIONS USING FOUR, 2 WAY POPPET VALVES



Connecting port drill size
 5/16 ϕ for -1, -2, -3, -4, -6
 3/8 ϕ for -5 and -8



ORDER INFORMATION:

SM410W-

{ Housing Only. Order 4 Cartridge Valves Separately, based on Functional Symbol (FS-#).

Ports A,B,P,T

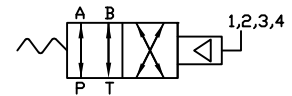
- 1 (1/8 NPT)
- 2 (1/4 NPT)
- 3 (3/8 NPT)
- 4 (SAE4, ORB)
- G4 (G 1/4-19 BSPP)
- 6 (SAE6, ORB)
- G6 (G 3/8-19 BSPP)
- 5 (1/2 NPT)
- 8 (SAE8, ORB)

Material Option, Pressure Rating

- | | | |
|-------|-----------------|------------|
| Blank | (6061 Aluminum) | 3,000 PSIG |
| S | (304 Stainless) | 5,000 PSIG |
| S316 | (316 Stainless) | 5,000 PSIG |

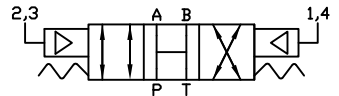
CONTROL OPTIONS (FUNCTIONAL SYMBOLS)
 VALVE POSITIONS AND TYPES USED.
 N/C = NORMALLY CLOSED
 N/O = NORMALLY OPEN
 Proper Valve Selection and Assembly is required to achieve functionality corresponding Functional Symbol (FS) required for the application.
 FS-# (Select Functional Symbol)

FS-1



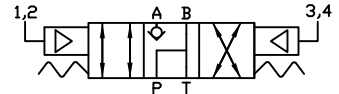
1 AND 4 N/D. 2 AND 3 N/C.

FS-2



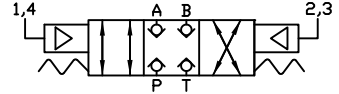
1, 2, 3, AND 4 N/D.

FS-3



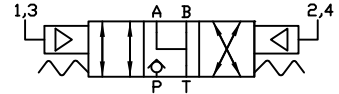
1 AND 3 N/C. 2 AND 4 N/D.

FS-4



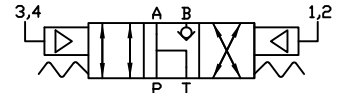
1, 2, 3, AND 4 N/C.

FS-5



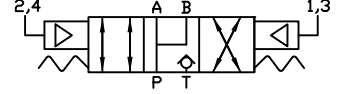
1 AND 2 N/C. 3 AND 4 N/D.

FS-6



1 AND 3 N/D. 2 AND 4 N/C.

FS-7



1 AND 2 N/D. 3 AND 4 N/C.

PILOT VALVE SELECTION:

In making valve ratio selection, note Valves 1 and 2 are affected by inlet pressure (P). Valves 3 and 4 may see full pressure on the side port and only Tank return line pressure on the bottom line. Valves 3 and 4 may be lower ratio.

Note the 2" Ctr. to Ctr. distance. This is allowance for Actuator (A) diameters of the valve pilots.

See Spec. Sheets 2PB N/C and 2PB N/D for Valve Ordering Information. Valves must be double blocking (bi-directional).

The SM410W*** Housings Require Valves to fit C-8542 (10-2) Cavities. Reference Cavity Drawing 1200621