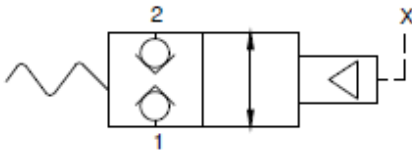


Air Pilot Valve Hydraulic Cartridge, 2 Position 2 Way NC

Functional Symbol:



Description:

Air Pilot operated valve is a two way, two position. Normally closed, checked in both directions, spring-return cartridge hydraulic valve.

Operation:

When pilot port is pressurized it allows flow between ports 1 and 2. Port #1 is the preferred load holding port.

Features:

- Soft Seat optional, great for zero leak including pneumatic applications.
- Many seals and material options

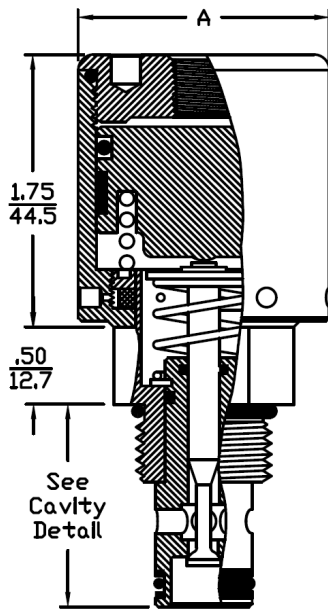
Ratings:

Max Operating Pressure:

Model 82: 5,000 psi (345 bar) Port 1, 5,000 psi (345 bar) Port 2
 Model 84: 5,000 psi(345 bar) Port 1, 3,000 psi (207bar) Port 2
 Pilot port 50 psi (3.5 bar) min 150psi (10.3 bar) max

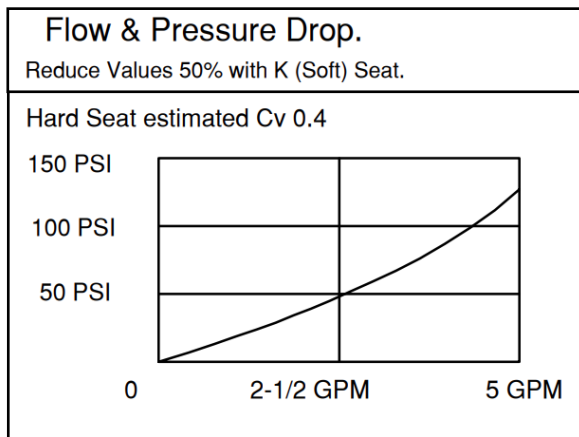
Pilot Pressure: To calculate pilot pressure see [Pilot Ratio Calculator click here.](#)
 (System pressure *1.1)/(Minimum air pressure *.9)

Operating Temperature: -45°F, (42 .7°C) to 200 °F , (93.3°C)



Technical:

| Pilot Ratio | "A" Diameter | Inch (Metric) |
|-------------|--------------|---------------|
| 40:1 | 1-1/2 | (38.10) |
| 49:1 | 1-5/8 | (41.28) |
| 69:1 | 1-7/8 | (47.63) |
| 104:1 | 2-1/4 | (57.15) |



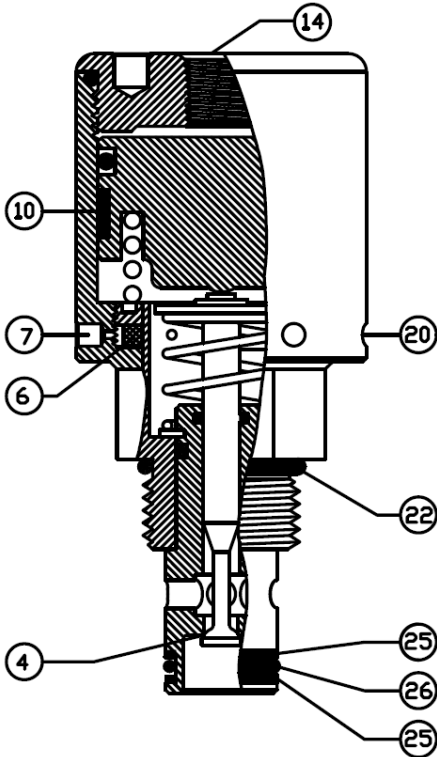
Air Pilot Valve Hydraulic Cartridge, 2 Position 2 Way NC

Ordering Information:

82 H B 2270401 D -2 V SST

| Model Number | Mounting | Seat | Pilot Ratio | Assembly | Pilot Port | External Seals | Material |
|----------------|--|---|---|---|---|---|--|
| 82 8-2 Cavity | Blank Tamper Resistant H Hex Body Mount | Blank Hard seat B Bubble tested hard seat K Kel-F soft seat E Teflon guide ring KE Kel-F soft seat, Teflon guide ring N Vented under piston, no filter NE No filter, Teflon guide ring V Viton soft seat | 2270401 40:1 3270491 49:1 6270691 69:1 7271041 104:1 | Blank Normal assembly D Dry assembly | Blank 1/8" NPT -2 1/4" NPT -4 SAE #4 -6 SAE #6 | Blank Buna V Viton R EPDM VV Viton internal and external RR EPDM internal and external EE Kelrez | Blank 17-4 SST wetted area, Aluminum Air Pilot Body SST 17-4 SST wetted area, Stainless Steel Air Pilot 316SST 17-4 SST wetted area, 316 Stainless Steel Air Pilot |
| 84 10-2 Cavity | | | | | | | |

Options:



Mounting:

Blank- is a tamper resistant model. Installation is using the side holes item #7 & #20. This is also a low profile valve.

H- Adds a 1" hex mount for easy wrench installation. Adds 1/2" to the height of the valve.

Seat:

Blank- Hard seat #4.

B- Hard seat is bubble tested with air for a low leak rate.

K- Kel F soft seal for zero leak, great for pneumatic operations #4.

V- Viton soft seal for zero leak, great for pneumatic operations #4.

N- No filter #6

E- Teflon Guide Ring #10

Assembly:

D- Dry assembly in wetted area. Valves are typically used in high purity testing systems. Please [contact our applications team](#) for further information.

Pilot Port:

Thread Size of #14

Seal Kits:

SRK- 8502 N

| Cavity Size | External Seals |
|------------------|----------------|
| 8502 8-2 Cavity | N Buna |
| 8542 10-2 Cavity | V Viton |
| | R EPDM |