

## D3- Monoblock Directional Hydraulic Control Valve

### Functional Symbol:

[Click here for spool options](#)

### Description:

The Doering Monoblock Hydraulic directional control valve is available in one (D1), two (D2) and three (D3) spool configurations. This hydraulics valve was designed for applications in which one valve is required to operate separate Hydraulic circuits independently.

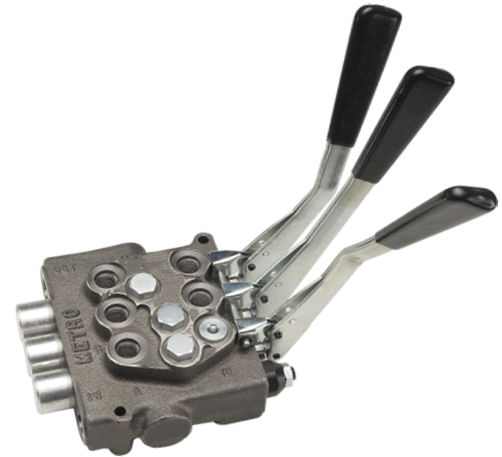
### Features:

- One piece mono-block body construction using high tensile cast iron.
- Hard chrome plated and precision fitted spools.
- Easy installation with inlet and outlet ports on same end.
- Load check for each spool prevents accidental load drop (omitted with motor spool).

### Installation Examples:

[Hydraulic Circuit- Selector Valve w Optional Float Spool](#)

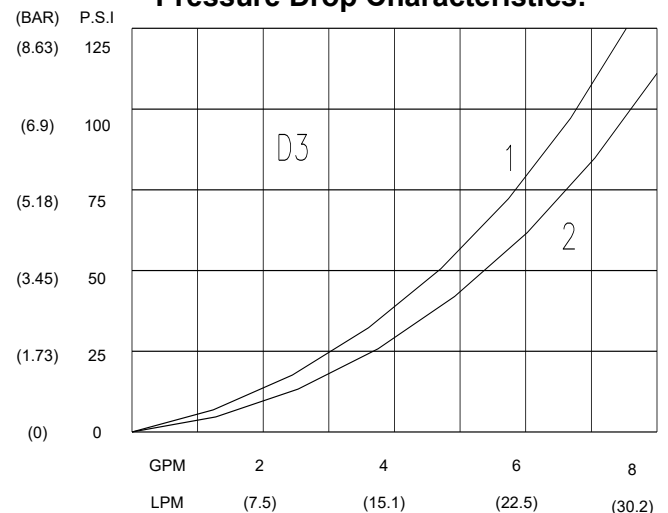
[Hydraulic Circuit- Double Selector w Power Beyond Directional](#)



### SPECIFICATIONS

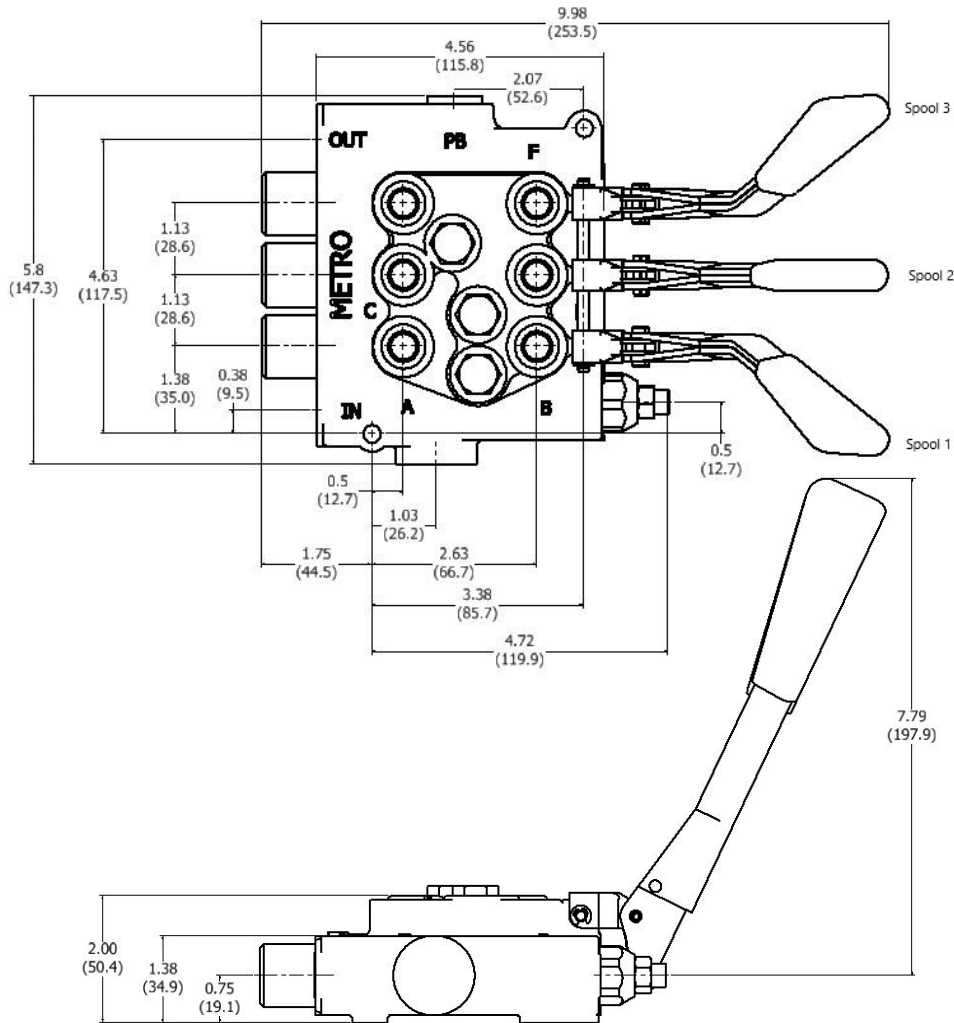
Flow Capacity	Pressure Rating	Temperature Range	Weight
8 GPM	3000 PSI	-22° to + 194° F	4 LBS. 6 OZ
75 (L/MIN)	(207 Bar)	-30° to + 90° C	(1.98 KG.)

### Pressure Drop Characteristics:



## D3- Monoblock Directional Hydraulic Control Valve

**Technical:**

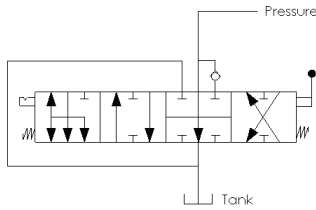


**Ordering Instructions:**

D3	B	T1	T2	T3	P	K	ZP	
Model	Relief Pressure	Spool Type Options			Power Beyond		Handle Options	Finish Options
<b>D3</b>	<b>O</b> No Relief	<b>T1</b> Float Spool (Spool 1 or 3 only)			<b>Q</b> PB not included-plugged <b>P</b> Power Beyond <b>S</b> Closed Center Plug	<b>Blank</b> No Handles <b>K</b> Stamped handle with grip (3) <b>KU</b> Stamped handle with grip. Configured to install handle 180°. (3) <b>NL</b> 90° Handle Position, Rod with handle (3) <b>NLR</b> 90° Handle Position, Rod with handle. Configured to install handle 180°. (3)	<b>Blank</b> Plain Casting <b>ZP</b> Zinc Plated <b>N</b> Micro switch shroud and wires. <b>NZP</b> Micro switch shroud and wires. Zinc Plated	
	<b>N</b> 900 PSI	<b>T2</b> Tandem Spool-Spring Center						
	<b>A</b> 1000 PSI	<b>T2FL</b> Tandem Spool-Heavy Duty Spring Center						
	<b>B</b> 1500 PSI	<b>TE2</b> Tandem Spool-Spring Center w/.250 hole in tang.						
	<b>C</b> 2000 PSI	<b>T3</b> Tandem Spool-3 Position Detent						
	<b>D</b> 2500 PSI	<b>T4</b> Tandem Spool-Spring Center-Micro Switch						
	<b>E</b> 3000 PSI	<b>T5</b> Tandem Spool-2 Position Detent, Spool In						
		<b>T6</b> Tandem Spool- 2 Position Detent, Spool Out						
		<b>M2</b> Motor Spool- Spring Center						
		<b>M2FL</b> Motor Spool- Heavy Duty Spring Center						
		<b>M3</b> Motor Spool- 3 Position Detent						
		<b>M4</b> Motor Spool- Spring Center- Micro Switch						
		<b>M5</b> Motor Spool- 2 Position Detent, Spool In						
		<b>M6</b> Motor Spool- 2 Position Detent, Spool Out						
	<b>Y2</b> 3 Way Spool- Spring Center							
	<b>Y3</b> 3 Way Spool- 3 Position Detent							
	<b>Y4</b> 3 Way Spool- Spring Center- Micro Switch							

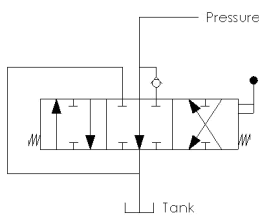
## D3- Monoblock Directional Hydraulic Control Valve

### Spool Type Options:



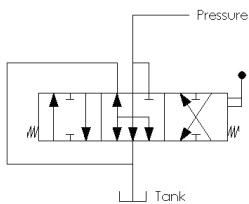
#### **T1- FLOAT SPOOL (spool actuator options not available)**

**4 WAY 4 POSITION OPEN CENTER** This spool option is used to control a double acting cylinder or a reversible motor. In the fourth position both of the work ports are open and oil goes through the open center passage. In neutral both of the work ports are blocked and oil goes through the open center passage to the next spool of a multi-spool valve or the power beyond of a single spool valve.



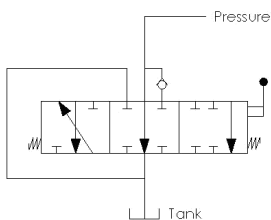
#### **T- TANDOM SPOOL**

**4 WAY 3 POSITION OPEN CENTER** This spool option is used to control a double acting cylinder or a reversible motor. In neutral both of the work ports are blocked and oil goes through the open center passage to the next spool of a multi-spool valve or the power beyond of a single spool valve.



#### **M- MOTOR SPOOL**

**4 WAY 3 POSITION OPEN CENTER** This spool option is used to control a double acting cylinder or a reversible motor. In neutral both of the work ports are open and oil goes through the open center passage to the next spool of a multi-spool valve or the power beyond of a single spool valve.



#### **Y- 3 WAY 3 POSITION SPOOL**

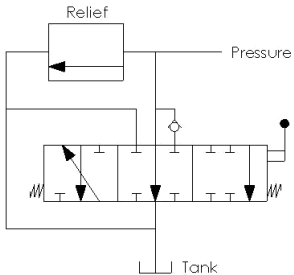
**3 WAY 3 POSITION OPEN CENTER** This spool option is used to control a single acting cylinder or a unidirectional motor. In neutral the work ports are blocked and oil goes through the open center passage to the next spool of a multi-spool valve or the power beyond of a single spool valve.

### Spool Actuator Options:

- 2- Tandem Spool-Spring Center
- 2FL-** Tandem Spool-Heavy Duty Spring Center
- E2-** Tandem Spool-Spring Center w\ .250 hole in tang.
- 3- Tandem Spool-3 Position Detent
- 4- Tandem Spool-Spring Center-Micro Switch
- 5- Tandem Spool-2 Position Detent, Spool In
- 6- Tandem Spool- 2 Position Detent, Spool Out

## D3- Monoblock Directional Hydraulic Control Valve

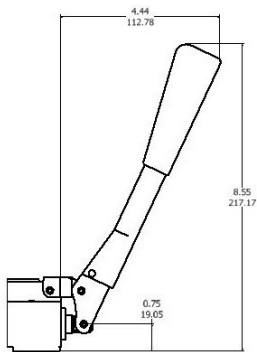
### Relief Valve Options:



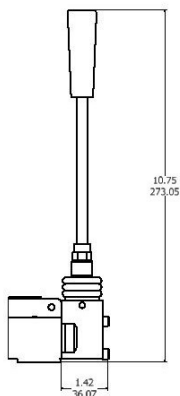
- O**– No relief valve installed
- N**– Relief valve set at 900 psi adjustable range is from (500 to 2499 psi)
- A**– Relief valve set at 1000 psi adjustable range is from (500 to 2499 psi)
- B**– Relief valve set at 1500 psi adjustable range is from (500 to 2499 psi)
- C**– Relief valve set at 2000 psi adjustable range is from (500 to 2499 psi)
- D**– Relief valve set at 2500 psi adjustable range is from (2500 to 3000 psi)
- E**– Relief valve set at 3000 psi adjustable range is from (2500 to 3000 psi)

### Handle Options:

All Handles incudes are shipped unassembled to prevent damage in transit.



- K**– Stamped handle with grip. ( Three handles supplied)
- KU**– Stamped handle with grip. Configured to install handle 180 degrees from image shown. ( Three handles supplied)



- NL**– 90 degree handle, Rod with handle.( Three handles supplied)
- NLR**– 90 degree handle, Rod with handle. Configured to install handle 180 degrees from image shown. ( Three handles supplied)