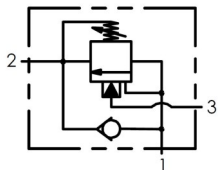


Counterbalance Valve, Hydraulic Cartridge

Functional Symbol



Description:

A screw-in, poppet type, cartridge counterbalance valve with internal Check Valve. For use as a blocking or load-holding device in your Hydraulic system.

Operation:

The DCBC allows unrestricted flow passage from port 2 to port 1, while blocking flow in the opposite direction. Pressure to Port 3 will release the flow from Port 1 to Port 2. A counterbalance, or load-holding, valve is a mechanism typically located near the actuator that uses hydraulic pressure to keep a load from moving. Generally, these valves have three related functions: support, control and safety.

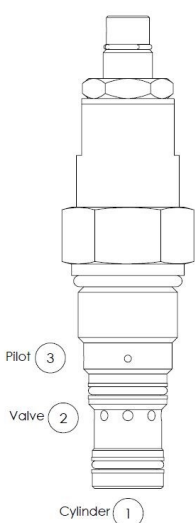
When required for load support, these valves prevent a hydraulic actuator under load from drifting in position. When lowering loads, the counterbalance controls the rate or speed of motion of the load on the actuator.

Features:

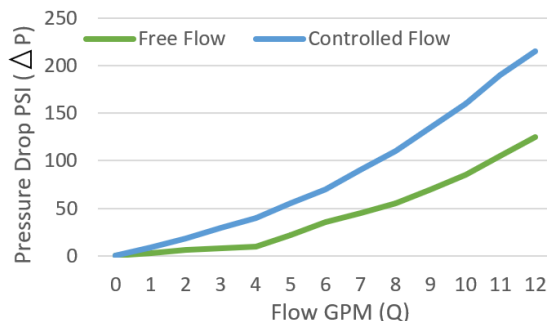
- Sealed spool for stability and repeatability.
- Hardened seat for long life and low leakage.
- Adjustable to achieve desired speed of load release.
- Compact size for space requirement consideration.
- Cartridge design for ease of installation and maintenance.
- 4.5:1 Pilot Ratio

Ratings:

Rated Flow: 12 GPM (45 LPM)
 Max. Inlet Pressure: 5,500 PSI (415 bar)
 Operating Temperature: -31° to 250°f (-35° to 121°c)
 Leak Rate: < 5 drops per minute
 Approx. Weight: .5 lbs. (0.23 kg)



Performance Curve
Flow vs. Pressure Drop
 (Through cartridge only)



Ordering Information:

Model	Cavity	Control	Adjustment Range	Seal Material	Material Coating
DCBC	08 8-3 Cavity	Blank Standard Screw Adjustment	A 500-3000 psi (35-210 bar)	Blank Buna-N	Blank Plated Steel
	10 10-3 Cavity	T Tamper Resistant- Factory Set	B 800- 4500 psi (55-315 bar)	V Viton	SS Stainless Steel
	16 16-3 Cavity	K Hand Knob	C 300-1500 psi (20-105 bar)	E EPDM	SS316 316 SST
			D 1000-6000 psi (70-415 bar)	W Low Temp Buna-N	
			E 200-800 psi (15-55 bar)		
			05 Factory Set to 500 psi 34.5 bar		
			10 Factory Set to 1000 psi 69 bar		
			15 Factory Set to 1500 psi 104 bar		
			20 Factory Set to 2000 psi 138 bar		
			25 Factory Set to 2500 psi 173 bar		
		30 Factory Set to 3000 psi 207 bar			