

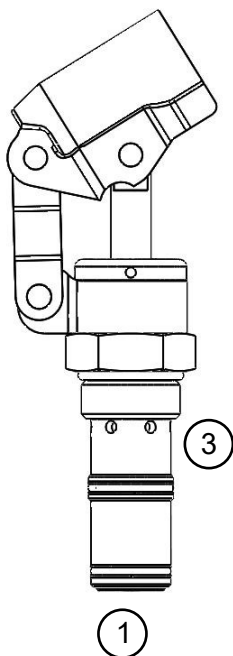
Cartridge Hand Pump, DCHP163 and 203 Series

Description

The DCHP 163 and 203 Series is a cartridge-style hydraulic hand pump, it is a double acting high pressure hand pump perfect for primary, backup, emergency power and hydrostatic testing applications. This hydraulic manual pump was designed so it can be used with many fluid types including water glycol.

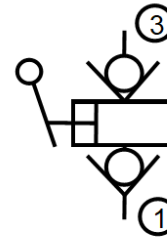
Features

- Over twice the performance of comparable cartridge hand pumps
- Compact design
- Balanced handle force (same force up or down)
- Pump fluids even water glycol
- Lever socket rotates 360°
- Dual integrated check valves
- Functions in any mounting position
- Fits in standard cavities
- Low leak rate, < 2 drops min
- Made in the USA



DCHP163 hand pump shown

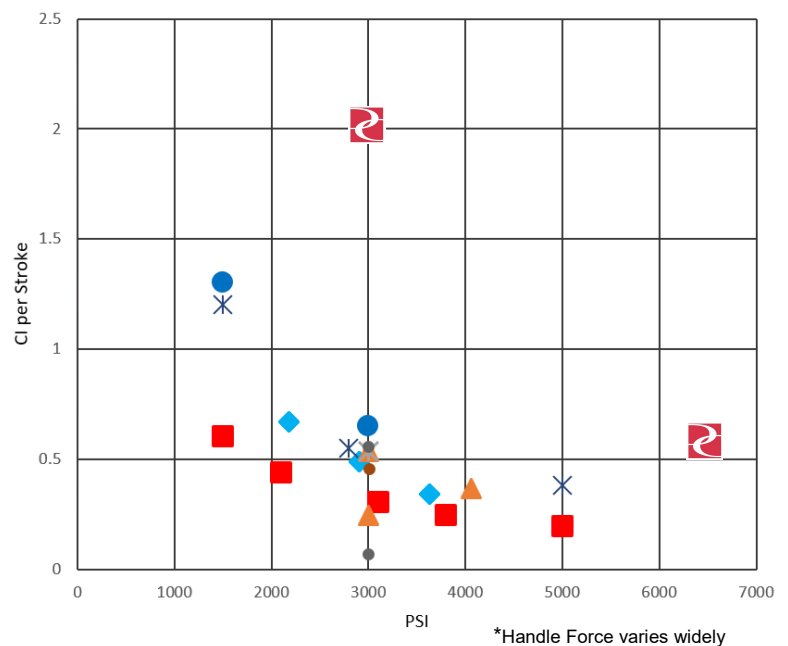
Functional Symbol





Applications

- Hydraulic backup
- Hydrostatic testing
- Parking brakes for heavy equipment
- Safety applications

Cartridge Hand Pumps- PSI / CI



| Pump | PSI | (Bar) | Displacement CI | (cc) |
|---|------|-------|-----------------|--------|
|  DCHP163 | 6500 | (450) | 0.541 | (8.9) |
|  DCHP203 | 3000 | (207) | 2.02 | (33.1) |

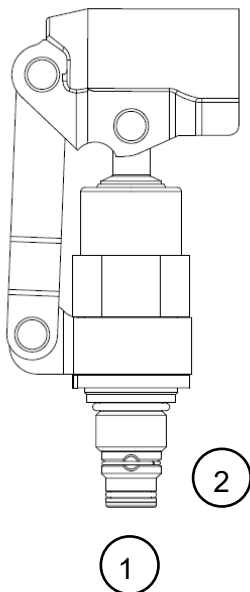
Cartridge Hand Pump, DCHP102 Series

Description

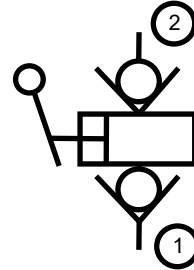
Screw-in cartridge-style manual hand pump with dual integrated check valves.

Features

- Seat made from hardened steel for long life
- Standard plating is ten times more corrosive resistant over competitors standard plating.
- Piston is treated, hardened, corrosion-resistance that out performs plating.
 - Improved wear and corrosion resistance
 - Improved heat and friction resistance
- Lever socket rotates 360°
- Dual integrated check valves
- Fits in industry standard 10-2 cavity
- Competitive price
- Made in the USA



Functional Symbol



Applications

- Hydraulic backup
- Hydrostatic testing
- Parking brakes, heavy equipment
- Safety applications

Part Number: DCHP102 X X X - X X

Operating Pressure:

21= 2,100 psi (145 Bar), .601CI (9.8cc)
 30= 3,000 psi (207 Bar), .442CI (7.2cc)

Seals:

(Blank)= Nitrile (NBR, Buna N)
 V= Fluorocarbon (Viton)

Handle: (Spec Sheet 1201459)

(Blank)= No Handle
 09= 9" Handle
 16= 16" Handle
 20= 20" Handle
 24= 24" Handle