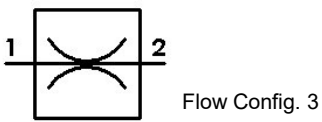
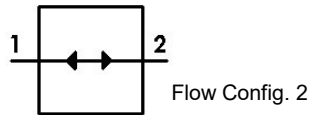
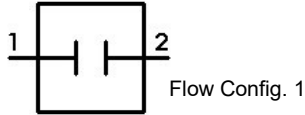


## Hydraulic Cavity Plug, DCP-2

**Functional Symbol:**



**Description:**

Cavity Plugs block or allow the passage of fluid in various cavities in manifolds. Available with flow configuration 3: interchangeable orifice .

**Operation:**

Fluid may be either Hydraulic or Pneumatic.

**Features:**

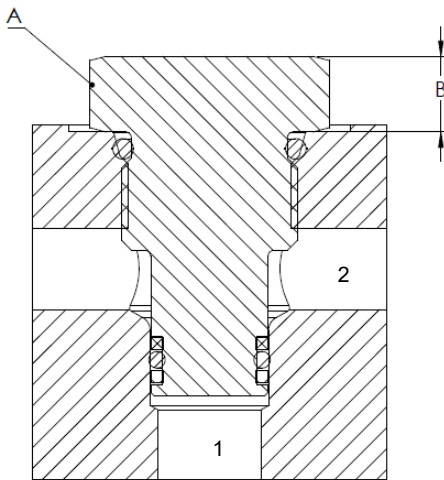
- Standard material for bodies is 316 stainless-steel .
- Standard material for O-rings is Nitrile.
- Optional seal materials are available.
- Standard material for Backup Rings is Teflon.
- Industry common cavities.

**Ratings:**

**Operating Pressure:** 5,000 PSI

**Maximum Allowable Pressure at Port 2:**

**Operating Temperature:** -35 to 121° C (-31 to 250° F) with Buna N seals; -26 to 204° C (-15 to 400° F) with Fluorocarbon seals; -57 to 121°C (70 to 250°F) with Ethylene Propylene seals; -54 to 135° C (-65 to 275° F) with Low Temp Buna N seals.



Flow Configuration 1 shown

Cavity Size	A (Hex) In/( mm)	B	Pound-Foot	(Newton-Meter)
08	0.875/(22.23)	0.32/(8.13)	40-43	(55-57)
10	1.0/(25.4)	0.375/(9.5)	43-48	(59-64)
12	1.25/ ( 31.75 )	0.5/(12.7)	68-75	(93-101)
16	1.5/(38.1)	0.5/(12.7)	112-123	(152-166)

**Ordering Information:**

DCP XX - 2 - 3 - N S316 - 015

Model Number	Cavity Size	Flow Configuration	Seals, External	Orifice Diameter
DCP Cavity Plug	08 08-2 Cavity	1 All Ports Blocked.	N Nitrile (NBR, Buna N)	015 .015 Orifice
	10 10-2 Cavity	2 All Ports Open.	V Fluorocarbon (FKM, Florel, Viton)	031 .031 Orifice
	12 12-2 Cavity	3 Flow to 1 and 2 restricted with orifice.	R Ethylene Propylene (EPR, EPM, EPDM)	047 .047 Orifice
	16 16-2 Cavity		W Low Temp Buna-N	070 .070 Orifice