

DCV-16

Description:

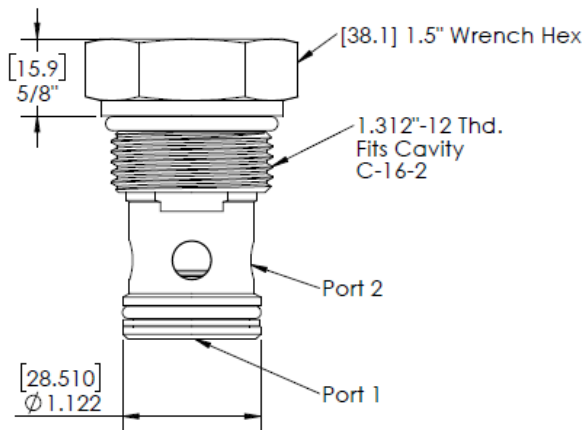
A screw-in, poppet type, cartridge check valve. For use as blocking or load-holding.

Features:

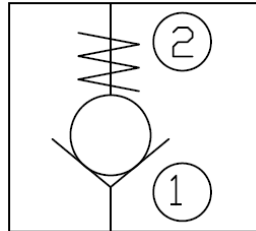
- Hardened seat for long life and low leakage.
- Optional soft seat added for zero leak.
- Optional 316 Stainless Steel.

Operation:

The DCV allows flow passage from port 1 to port 2, while blocking flow in the opposite direction.



Functional Symbol



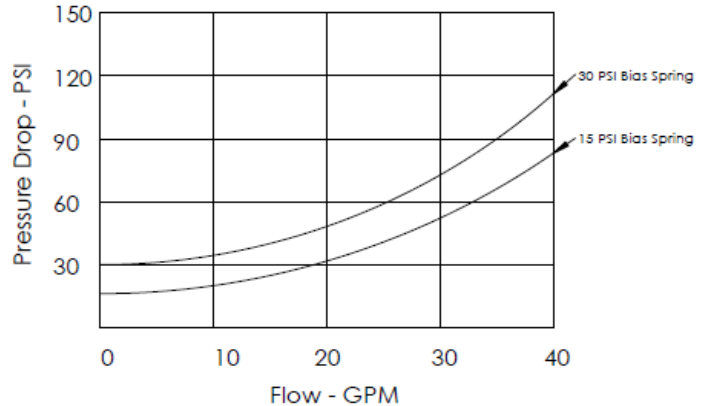
Installation and Ratings

Operating Pressure	5,000 psi	345 bar
Temperature	-40 to 250° F	-40 to 120° C
Mediums	Gas or liquid	
Installation Torque	(A) 80-90 ft lbs	(A) 108-122 Nm
	(S) 100-110 ft lbs	(S) 136-149 Nm

(A) = Aluminum

(S) = Stainless Steel

Flow and Pressure Drop Chart



Order Information:

DCV - 16 - - -

<p>Seat Options</p> <p>H= Hard Seat</p> <p>Soft Seat Options</p> <p>N = Buna-N (Nitrile NBR)</p> <p>R = EPR/EPDM</p> <p>V = Viton (Fluorocarbon MFK)</p> <p>K = Kel-F (PCTFE)</p> <p>Seals, External</p> <p>N = Buna = N (Nitrile NBR)</p> <p>R = EPR/EPDM</p> <p>V = Viton (Fluorocarbon FKM)</p> <p>E = Teflon (PTFE)</p>	<p>Material, Body Mount</p> <p>Blank = Plated Steel</p> <p>S316 = 316 SST</p> <p>Crack Pressure</p> <p>15 = 15 PSI (1.0 bar) +/-50%</p> <p>30 = 30 PSI (2.1 bar) +/-20%</p> <p>50 = 50 PSI (3.4 bar) +/-20%</p> <p>70 = 70 PSI (4.8 bar) +/-20%</p>
--	---

*Other seal material available upon request