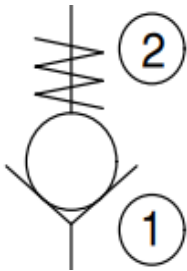


## DCV Check Valve Hydraulic Cartridge

**Functional Symbol:**

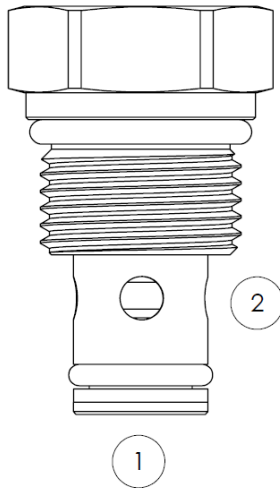


**Description:**

A screw-in, poppet type, cartridge check valve. For use as a blocking or load-holding device.

**Operation:**

The DCV allows flow passage from port 1 to port 2, while normally blocking flow in the opposite direction. Can be used to protect a hydraulic system.



**Features:**

Hardened seat for long life and low leakage.

Optional soft seat added for zero leak, great even in Pneumatic operations.

**Ratings:**

Operating Pressure: 5,000 PSI (345 bar) all ports

Operating Temperature: -40 to 250°f (-40 to 120°c)

Mediums: Gas or Liquid

**Technical:**

Cavity Size	Wrench Hex Size Inch, (MM)	Leak Rate Drops/min	Flow Ratings Reduce Values 40% with Soft Seat Option	Thread Size	Installation Torque Ft-lbs (Nm)
08	7/8" (22.2)	'H' Hard Seat <3 , Soft Seat <1	8 GPM (30 lpm)	3/4-16 UNF	25 (34)
10	1" (25.4)	'H' Hard Seat <3 , Soft Seat <1	10 GPM (38 lpm)	7/8-14 UNF	25 (34)
16	1-1/2" (38.1)	'H' Hard Seat <5 , Soft Seat <1	40 GPM (151 lpm)	1-5/16-12 UN	90 (122)

DCV - N - 10 - R - 03 -

Model Number	Seat Options	Cavity Size	Seals, External	Crack Pressure	Material, External/ Interior
DCV Cartridge Check Valve	H Hard Seat	08 C8-2	N Buna = N (Nitrile NBR)	03 03 psi (0.207 bar)	Blank 304/ 17-4 SST
	N Soft Seat, Buna-N (Nitrile NBR)	10 C10-2	R EPR/EPDM	10 10 psi (0.69 bar)	S316 316/ 17-4 SST
	V Soft Seat, Viton ( Fluorocarbon MFKG)	16 C16-2	V Viton (Fluorocarbon FKM)	25 25 psi (1.725 bar)	P Plated Steel/Steel Internal
	R Soft Seat, EPR/EPDM		E Teflon (PTFE)	50 50 psi (3.45 bar)	SC304 304SST Exterior/Steel Internals
	K Soft Seat, Kel-F (PCTFE)			70 70 psi (4.83 bar)	SC316 316SST Exterior/Hardened Steel Internals
				0 0 psi (0 bar)	