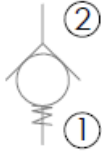


## DCVR Reverse Flow Check Valve Hydraulic Cartridge

**Functional Symbol:**



**Description:**

A screw-in, poppet type, cartridge check valve. For use as a blocking or load-holding device.

**Operation:**

The DCVR allows flow passage from port 2 to port 1, while normally blocking flow in the opposite direction.

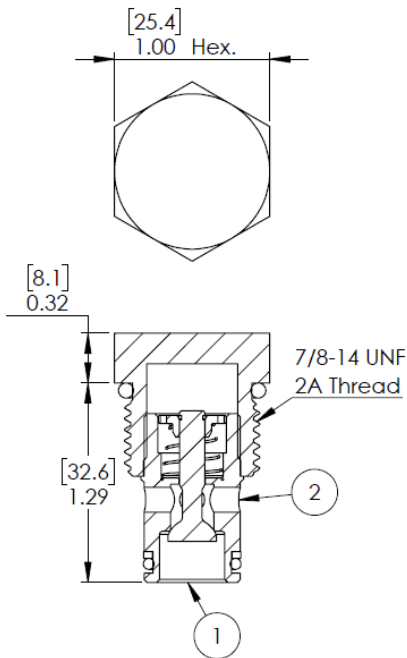
**Features:**

Hardened seat and poppet for long life and low leakage.

**Ratings:**

Operating Temperature: -40 to 250°F (-40 to 120°C)

Mediums: Hydraulic Fluid



Cavity Size	Wrench Hex Size Inch, (MM)	Internal Leak Rate Drops/min	Flow Ratings	Pressure Ratings PSI (Bar), All Ports	Thread Size	Installation Torque Ft-lbs (Nm)
C10-2	1" (25.4)	'H' Hard Seat <5	10 GPM (38 lpm)	5,000 (345)	7/8-14 UNF	25 (34)
C16-2	1.50" (38)	'H' Hard Seat <10	40 GPM (151 lpm)	3,500 (241)	1-5/16-12 UN	50 (68)

**Ordering Information**

Model Number	Seat Options	Cavity Size	Seals, External	Crack Pressure	Material, External/ Interior
<b>DCVR</b> Reverse Flow Cartridge Check Valve	<b>H</b> Hard Seat	<b>10</b> C10-2 <b>16</b> C16-2	<b>N</b> Buna = N (Nitrile NBR) <b>R</b> EPR/EPDM <b>V</b> Viton (Fluorocarbon FKM) <b>W</b> Low Temp Buna	<b>06</b> 06 psi (0.414 bar)	<b>Blank</b> Plated Steel/Steel Internal <b>SC316</b> 316SST Exterior/Hardened Steel Internals

\*Optional Bias Springs for crack pressure