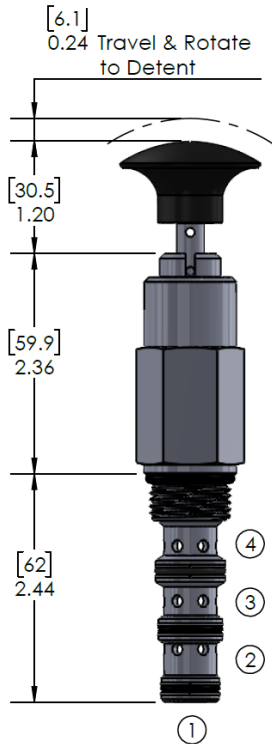
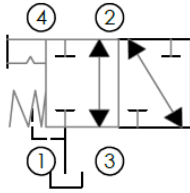


## DMP Series Manual Hydraulic Cartridge

### Functional Symbol:



### Description:

A screw-in, spool type, manual pull, cartridge directional valve. For use as a directional control device.

### Operation:

The valve allows flow passage from port 3 to port 2 in the neutral position, while port 1 and port 4 is blocked. In the actuated position (pulled) allows flow from port 3 to port 4, and blocks flow to port 1 and port 2.

NOTE: Port 1 is intended to be a tank port only.

### Features:

- Hardened spool and cage for long life and low leakage.
- Optional sealed spool design
- Optional rotational lock (detent) position.
- Industry common cavity.

### Ratings:

Operating Pressure:

On ports 2, 3 & 4: 3,500 PSI (241 bar)

On port 1: 180 PSI (12.4 bar) Max.

Operating Temperature: -40 to 250°F (-40 to 120°C)

Fluids: Mineral based or synthetic hydraulic fluid with lubricating properties

### Technical:

Cavity Size	Wrench Hex Size Inch, (MM)	Leak Rate	Flow Ratings	Thread Size	Installation Torque Ft-lbs (Nm)
VC10-4	1.00 [25.4]	5 in <sup>3</sup> /min [82 cc/min] Max.	9 GPM [34.1 lpm]	7/8-14 UNF	25 (33.9)

### Ordering Information:

**DMP 10-4 2 K N -**

Model Number	Cavity Size	Position	Actuator	Seals, External	Material, External/ Interior	
<b>DMP</b> Manual Directional Valve	<b>08-4</b> C8-4	<b>2</b>	<b>K</b> Black Plastic Knob	<b>N</b> Buna = N (Nitrile NBR)	<b>Blank</b> Plated Steel/Steel Internal	
	<b>10-4</b> C10-4			<b>R</b> EPR/EPDM		<b>S</b> 303/ 17-4 SST
	<b>16-4</b> C16-4			<b>V</b> Viton (Fluorocarbon FKM)		<b>S316</b> 316/ 17-4 SST
	<b>E</b> Teflon (PTFE)			<b>SC316</b> 316SST Exterior/Hardened Steel Internals		
	<b>NS</b> Buna N with Sealed Spool					
<b>VS</b> Viton with Sealed Spool						